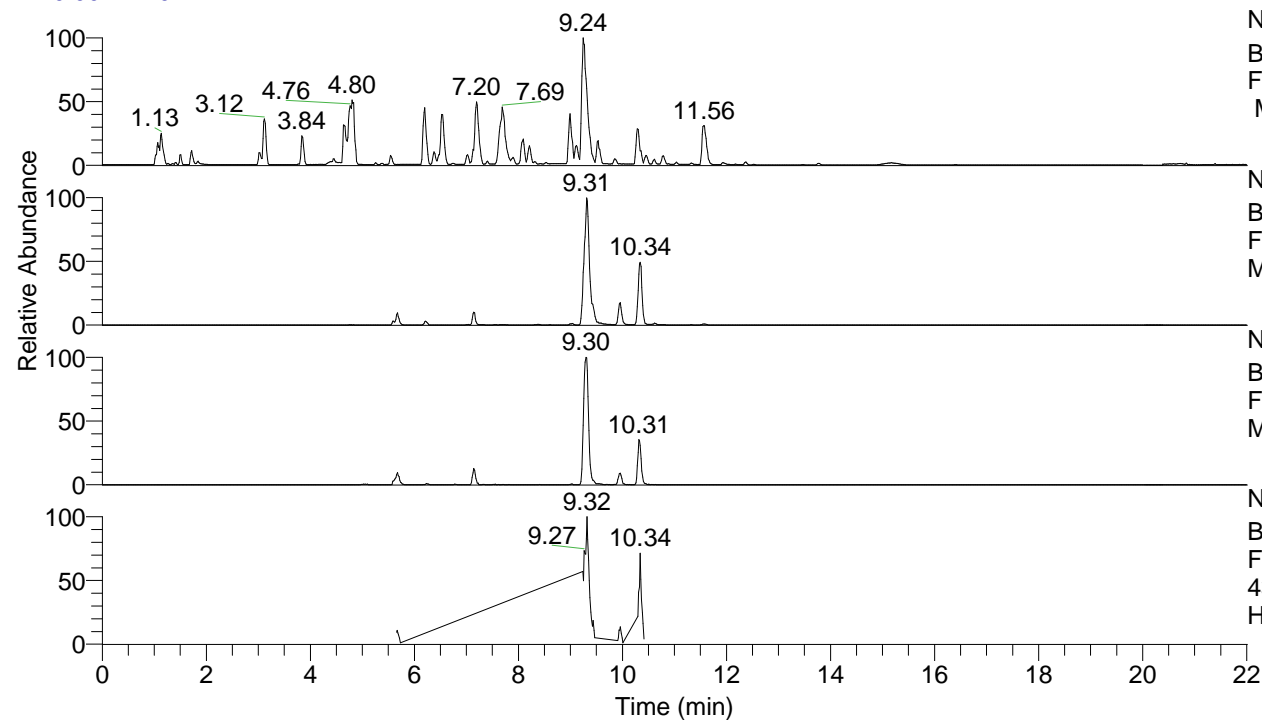


RT: 0.00 - 22.01



NL: 8.52E7
 Base Peak m/z= 100.00000-1500.00000
 F: FTMS + p ESI Full ms [100.00-1500.00]
 MS Hcurta

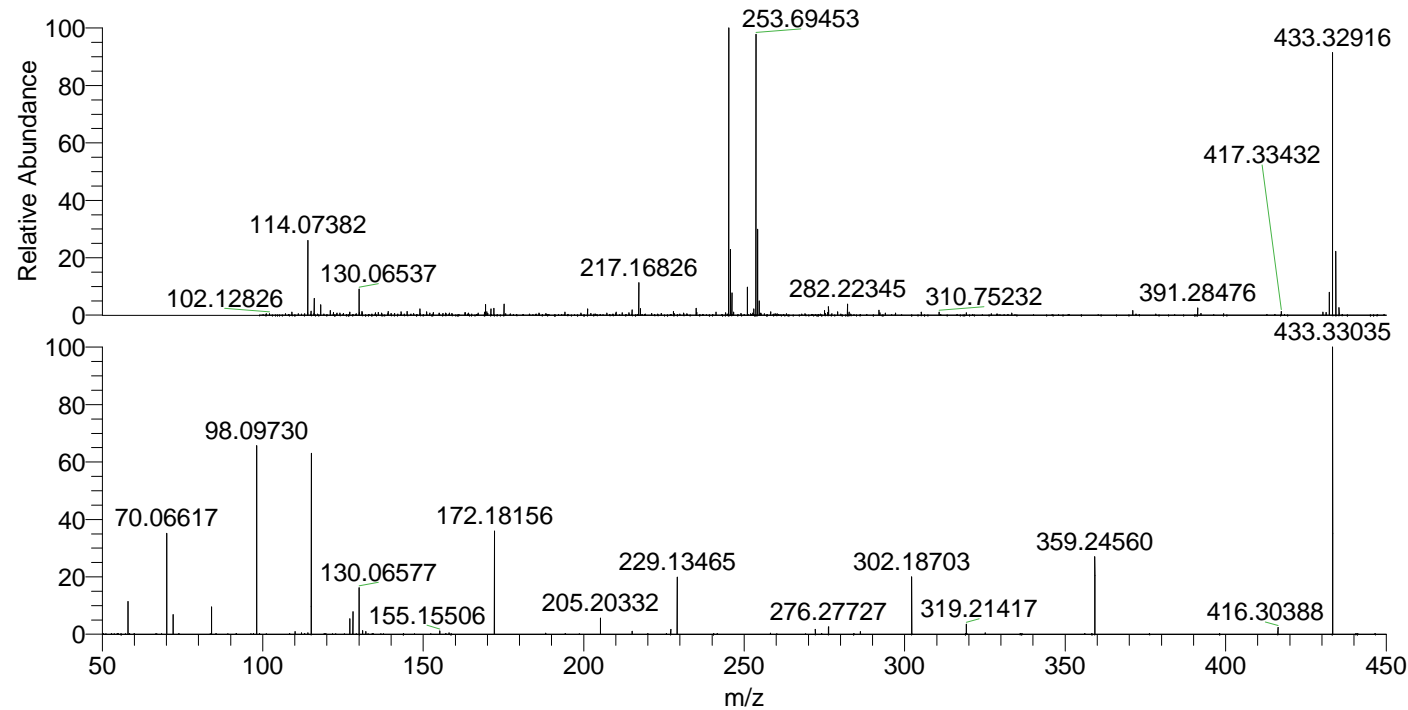
NL: 6.63E6
 Base Peak m/z= 433.32477-433.33343 F:
 FTMS + p ESI Full ms [100.00-1500.00]
 MS Hcurta

NL: 1.33E6
 Base Peak m/z= 217.16629-217.17063 F:
 FTMS + p ESI Full ms [100.00-1500.00]
 MS Hcurta

NL: 6.55E5
 Base Peak m/z= 50.00000-1500.00000 F:
 FTMS + p ESI d Full ms2
 433.33@hcd35.00 [50.00-460.00] MS
 Hcurta

Hcurta#4133-4175 RT: 10.30-10.40 AV: 8
 F: FTMS + p ESI d Full ms2 433.33 ...
 m/z= 50.00000-1000.00000

m/z	Intensity	Relative
58.06618	26416.1	11.38
70.06617	81544.4	35.12
72.08173	15362.7	6.62
84.08170	22303.1	9.61
98.09730	148109.3	63.79
110.09722	2109.3	0.91
112.11284	1163.6	0.50
115.12376	142775.5	61.49
127.12379	12258.1	5.28
128.10767	18234.3	7.85
130.06577	36940.9	15.91
131.11865	3048.2	1.31
132.15008	2149.4	0.93
155.15506	2721.9	1.17
172.18156	81064.8	34.91
205.20332	12950.0	5.58
215.11842	2457.3	1.06
227.11902	3837.0	1.65
229.13465	45217.8	19.48
272.17798	4076.3	1.76
276.27727	5863.9	2.53
286.19212	2188.3	0.94
302.18703	46032.2	19.83
319.21417	7868.1	3.39
359.24560	61261.1	26.38
416.30388	5538.1	2.39
433.33035	232181.6	100.00



NL: 3.52E6
 Hcurta#4153 RT: 10.34
 AV: 1 T: FTMS + p ESI
 Full lock ms
 [100.00-1500.00]

NL: 2.25E5
 Hcurta#4130-4175 RT:
 10.30-10.40 AV: 8 F:
 FTMS + p ESI d Full ms2
 433.33@hcd35.00
 [50.00-460.00]