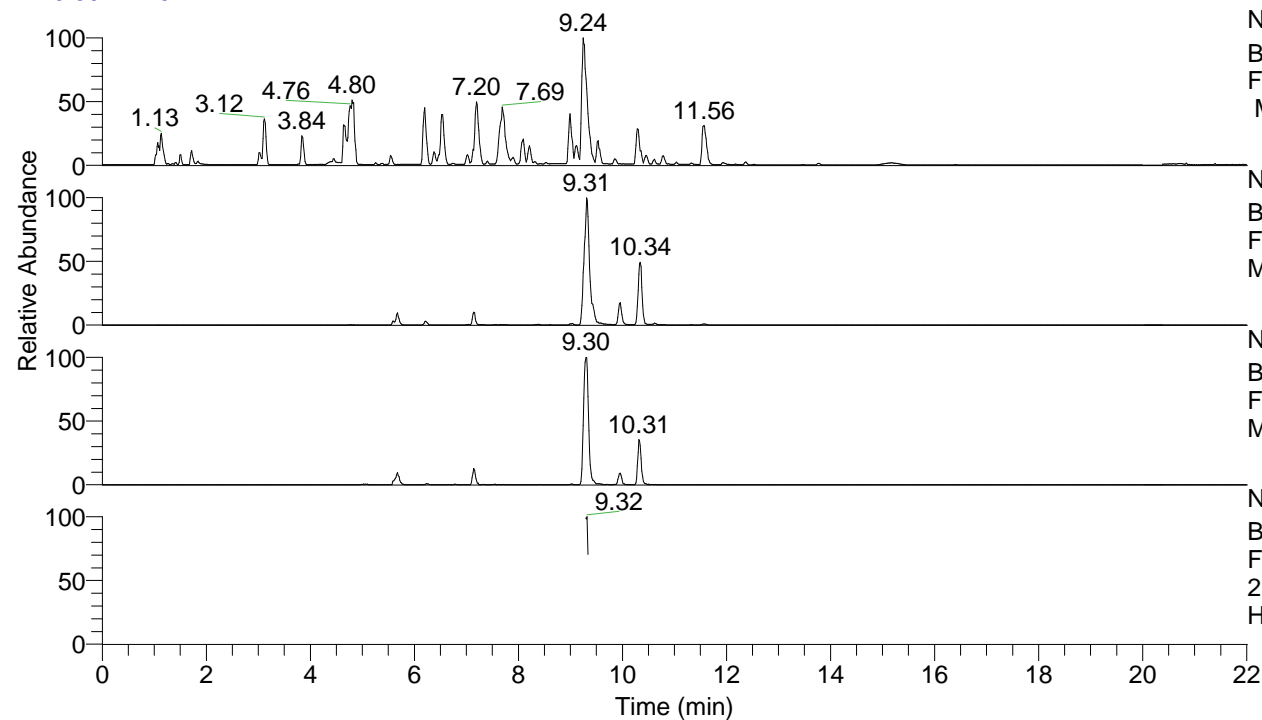


RT: 0.00 - 22.01



NL: 8.52E7
 Base Peak m/z= 100.00000-1500.00000
 F: FTMS + p ESI Full ms [100.00-1500.00]
 MS Hcurta

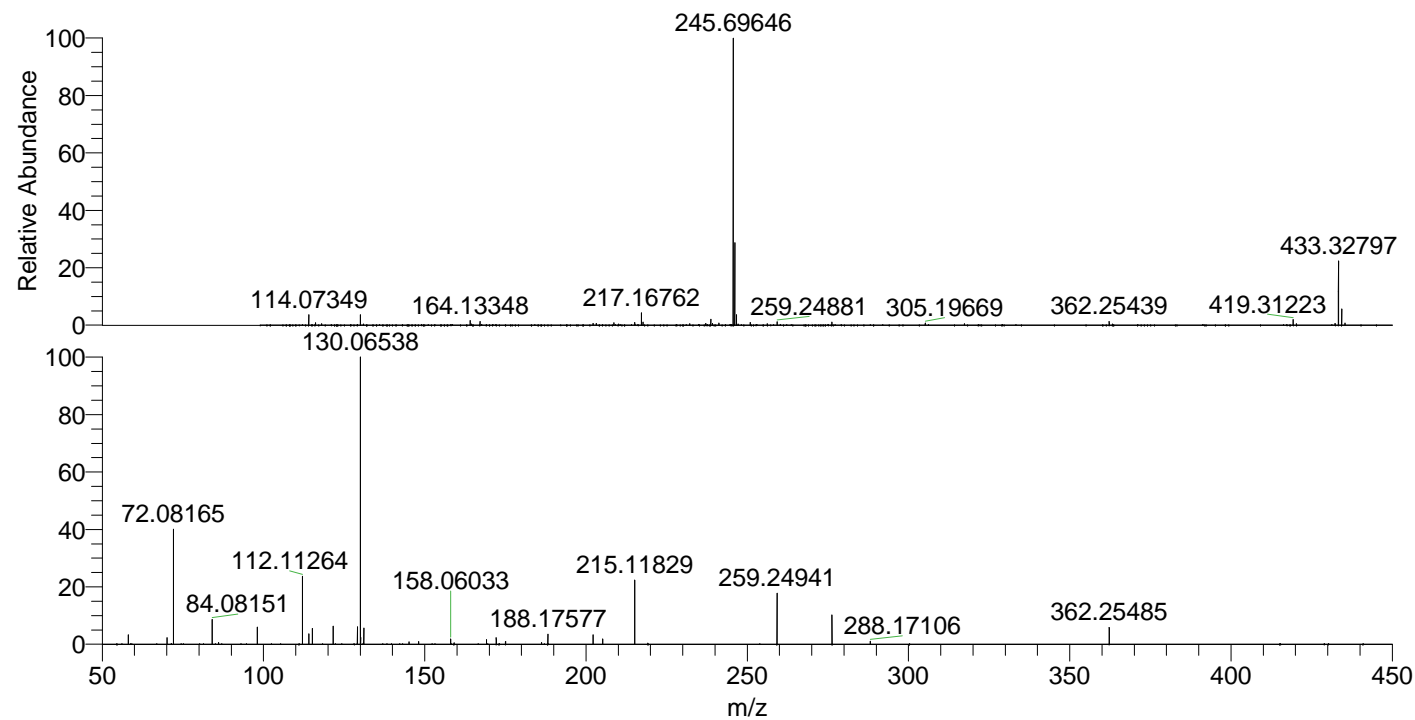
NL: 6.63E6
 Base Peak m/z= 433.32477-433.33343 F:
 FTMS + p ESI Full ms [100.00-1500.00]
 MS Hcurta

NL: 1.33E6
 Base Peak m/z= 217.16629-217.17063 F:
 FTMS + p ESI Full ms [100.00-1500.00]
 MS Hcurta

NL: 4.67E5
 Base Peak m/z= 50.00000-1500.00000 F:
 FTMS + p ESI d Full ms2
 217.17@hcd35.00 [50.00-460.00] MS
 Hcurta

Hcurta#3732-3749 RT: 9.30-9.34 AV: 4
 F: FTMS + p ESI d Full ms2 217.17 ...
 m/z= 50.00000-1000.00000

| m/z | Intensity | Relative |
|-----------|-----------|----------|
| 58.06601 | 13254.0 | 3.23 |
| 70.06600 | 9416.8 | 2.30 |
| 72.08165 | 164047.0 | 40.02 |
| 72.08569 | 2420.7 | 0.59 |
| 84.08151 | 34928.1 | 8.52 |
| 86.06077 | 2594.4 | 0.63 |
| 98.09692 | 24633.5 | 6.01 |
| 112.11264 | 96369.9 | 23.51 |
| 114.09197 | 15200.4 | 3.71 |
| 115.12351 | 22514.2 | 5.49 |
| 121.61534 | 25330.8 | 6.18 |
| 129.13886 | 25112.8 | 6.13 |
| 130.06538 | 409900.2 | 100.00 |
| 130.12868 | 9784.2 | 2.39 |
| 131.06914 | 2114.5 | 0.52 |
| 131.11828 | 22790.4 | 5.56 |
| 145.13418 | 3225.3 | 0.79 |
| 148.14480 | 3829.6 | 0.93 |
| 158.06033 | 7476.9 | 1.82 |
| 169.17005 | 6357.0 | 1.55 |
| 172.18087 | 9637.9 | 2.35 |
| 175.06341 | 3805.5 | 0.93 |
| 186.19717 | 2432.8 | 0.59 |
| 188.17577 | 14736.1 | 3.60 |
| 202.19208 | 13164.3 | 3.21 |
| 205.20247 | 7690.3 | 1.88 |
| 215.11829 | 92190.6 | 22.49 |
| 259.24941 | 72808.7 | 17.76 |
| 276.27570 | 41375.0 | 10.09 |
| 288.17106 | 4575.9 | 1.12 |
| 362.25485 | 24236.0 | 5.91 |



NL: 2.93E7
 Hcurta#3739 RT: 9.31
 AV: 1 T: FTMS + p ESI
 Full ms [100.00-1500.00]

NL: 4.03E5
 Hcurta#3674-3829 RT:
 9.30-9.34 AV: 4 F: FTMS
 + p ESI d Full ms2
 217.17@hcd35.00
 [50.00-460.00]