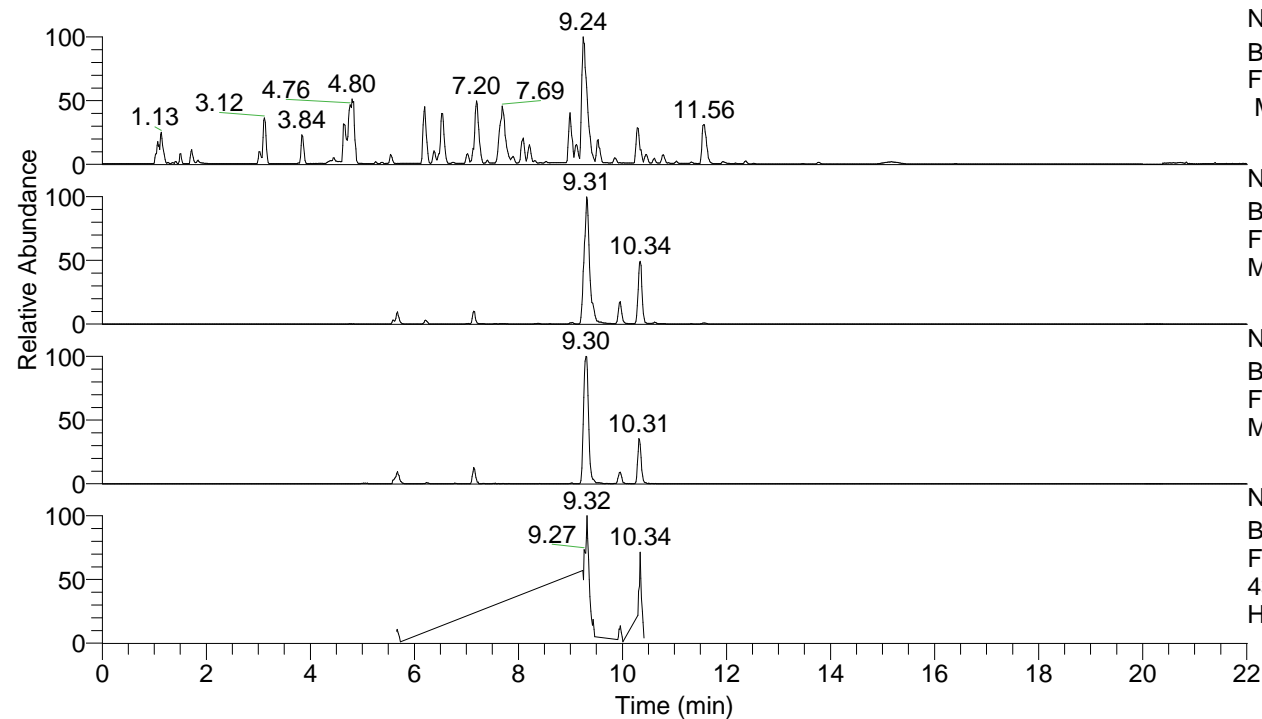


RT: 0.00 - 22.01



NL: 8.52E7
 Base Peak m/z= 100.00000-1500.00000
 F: FTMS + p ESI Full ms [100.00-1500.00]
 MS Hcurta

NL: 6.63E6
 Base Peak m/z= 433.32477-433.33343 F:
 FTMS + p ESI Full ms [100.00-1500.00]
 MS Hcurta

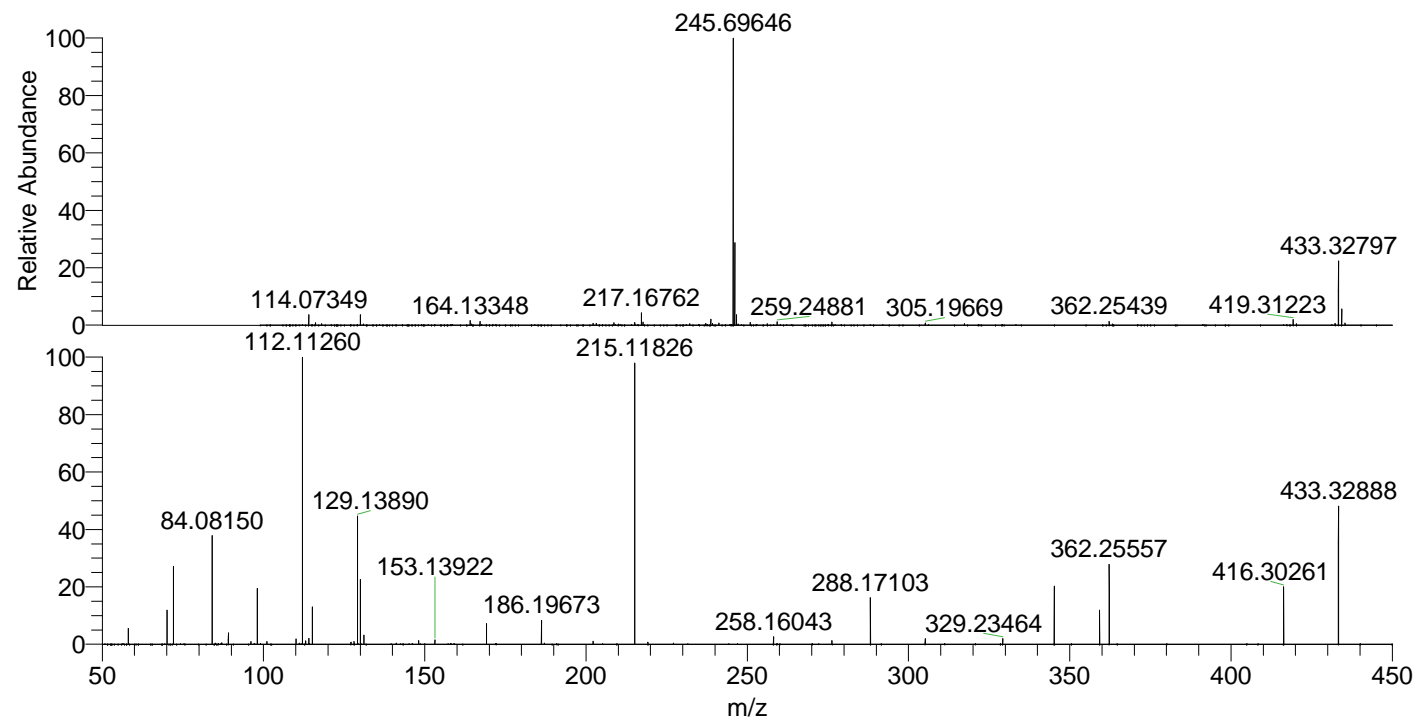
NL: 1.33E6
 Base Peak m/z= 217.16629-217.17063 F:
 FTMS + p ESI Full ms [100.00-1500.00]
 MS Hcurta

NL: 6.55E5
 Base Peak m/z= 50.00000-1500.00000 F:
 FTMS + p ESI d Full ms2
 433.33@hcd35.00 [50.00-460.00] MS
 Hcurta

Hcurta#3724-3760 RT: 9.28-9.36 AV: 7

F: FTMS + p ESI d Full ms2 433.33 ...
 m/z= 50.00000-1000.00000

m/z	Intensity	Relative
58.06605	26025.8	5.82
70.06597	54993.7	12.30
72.08164	128554.4	28.75
84.08149	160427.6	35.88
87.09252	2485.3	0.56
89.10814	18647.7	4.17
96.08136	3553.6	0.79
98.09710	92253.9	20.63
101.10795	4444.7	0.99
110.09696	9071.7	2.03
112.11260	425010.7	95.06
113.10785	5537.3	1.24
114.09189	10680.7	2.39
115.12343	61096.6	13.66
127.12344	3373.2	0.75
128.10777	4838.3	1.08
129.13890	174318.0	38.99
130.06536	104120.6	23.29
131.11850	15436.4	3.45
148.14484	6182.4	1.38
153.13922	7217.5	1.61
169.17007	34367.0	7.69
186.19673	38194.4	8.54
202.19218	5150.9	1.15
215.11826	447113.2	100.00
219.21871	3380.2	0.76
258.16043	13076.1	2.92
276.27707	6534.8	1.46
288.17097	73805.5	16.51
305.19838	8466.2	1.89
329.23464	10076.9	2.25
345.22893	95197.8	21.29
359.24433	36406.0	8.14
362.25563	133422.4	29.84
416.30266	94480.3	21.13
433.32887	223556.7	50.00



NL: 2.93E7
 Hcurta#3739 RT: 9.31
 AV: 1 T: FTMS + p ESI
 Full ms [100.00-1500.00]

NL: 4.26E5
 Hcurta#3715-3765 RT:
 9.27-9.36 AV: 8 F: FTMS
 + p ESI d Full ms2
 433.33@hcd35.00
 [50.00-460.00]