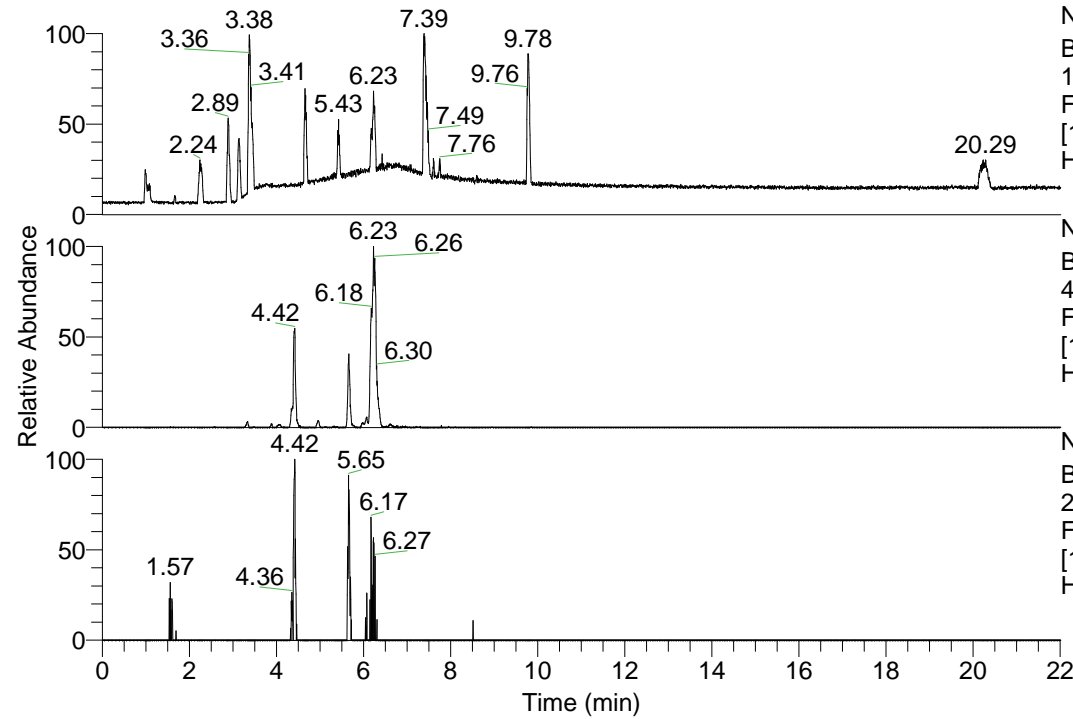


RT: 0.00 - 22.01



NL: 1.13E8
 Base Peak m/z=
 100.00000-1500.00000 F:
 FTMS + p ESI Full ms
 [100.00-1500.00] MS
 Hcurta_HDX

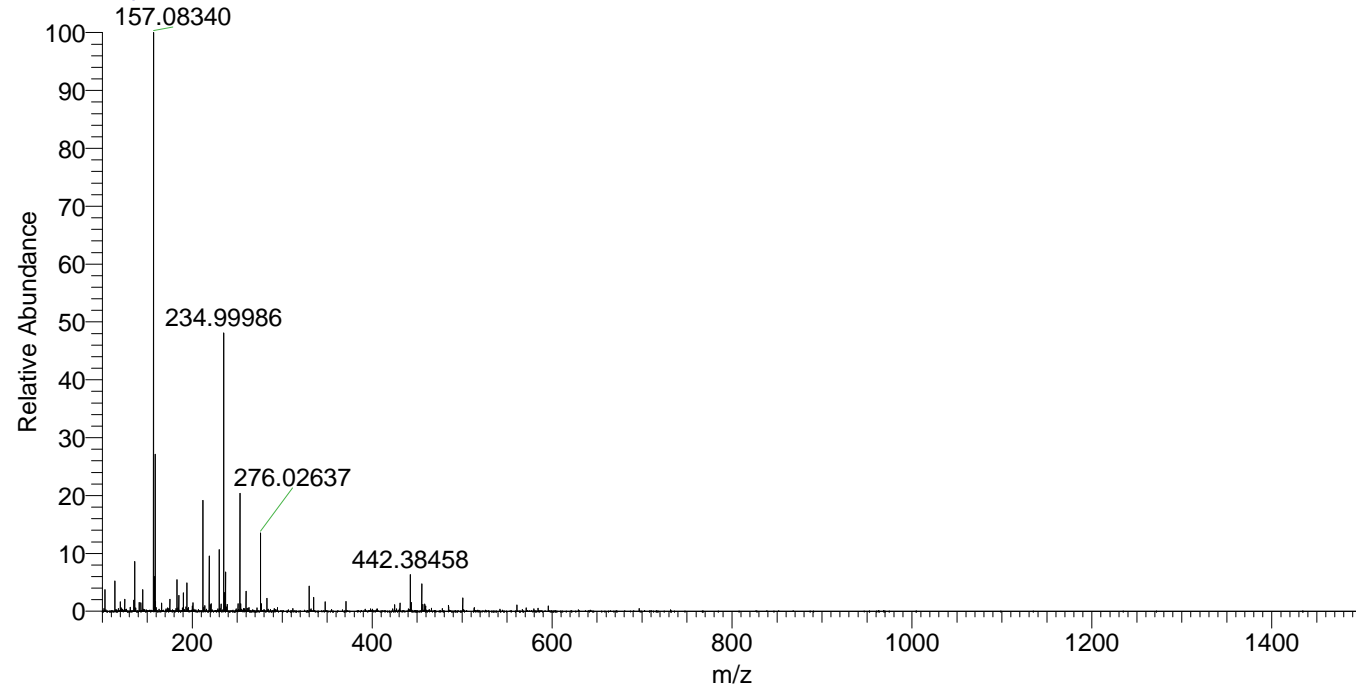
NL: 2.21E6
 Base Peak m/z=
 442.38338-442.38780 F:
 FTMS + p ESI Full ms
 [100.00-1500.00] MS
 Hcurta_HDX

NL: 4.58E4
 Base Peak m/z=
 222.19874-222.20096 F:
 FTMS + p ESI Full ms
 [100.00-1500.00] MS
 Hcurta_HDX

Hcurta_HDX#693 RT: 4.42
 T: FTMS + p ESI Full ms [100.00-1500.00]
 m/z= 442.00000-443.00000

m/z	Intensity	Relative	Delta (ppm)	Composition
442.38458	1208458.1	100.00	-1.04	C ₂₃ H ₃₂ ² H ₉ O ₂ N ₆
			2.46	C ₂₃ H ₃₀ ² H ₁₀ O ₂ N ₆
			-4.54	C ₂₃ H ₃₄ ² H ₈ O ₂ N ₆

Hcurta_HDX #693 RT: 4.42 AV: 1 NL: 1.87E7
 T: FTMS + p ESI Full ms [100.00-1500.00]



Hcurta_HDX #693 RT: 4.42 AV: 1 NL: 1.19E6
 T: FTMS + p ESI Full ms [100.00-1500.00]

