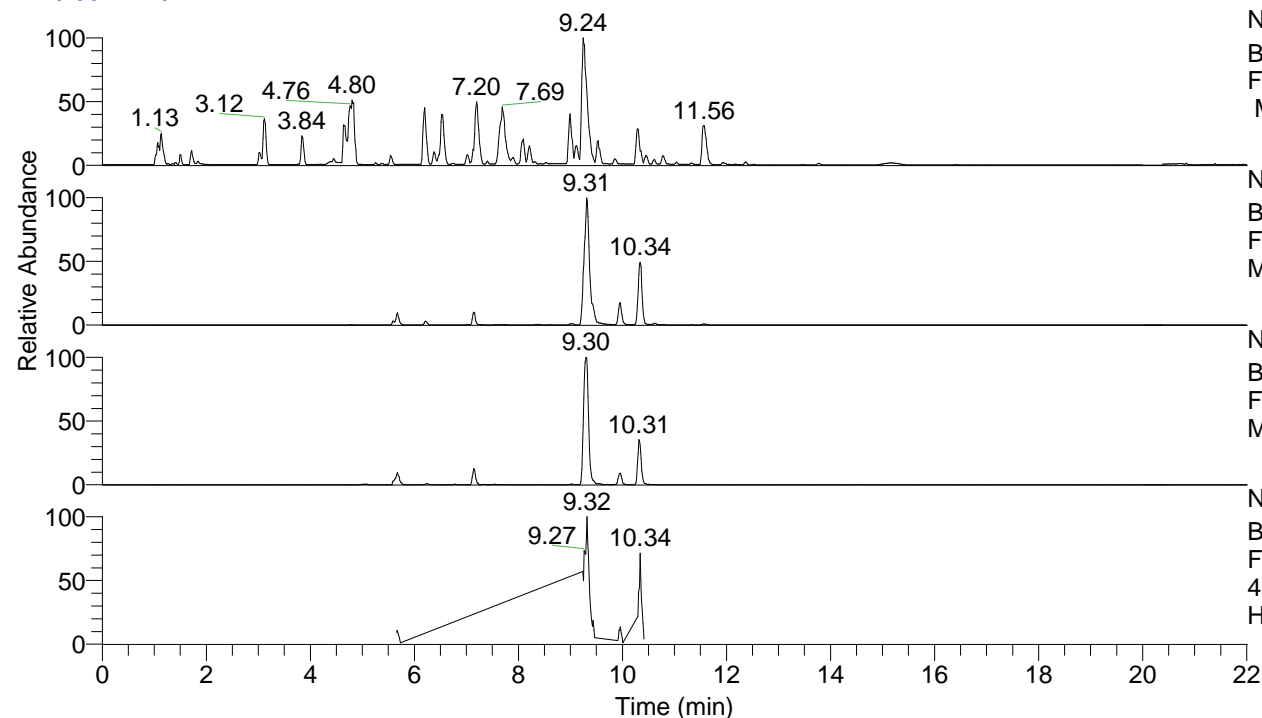


RT: 0.00 - 22.01



NL: 8.52E7
 Base Peak m/z= 100.00000-1500.00000
 F: FTMS + p ESI Full ms [100.00-1500.00]
 MS Hcurta

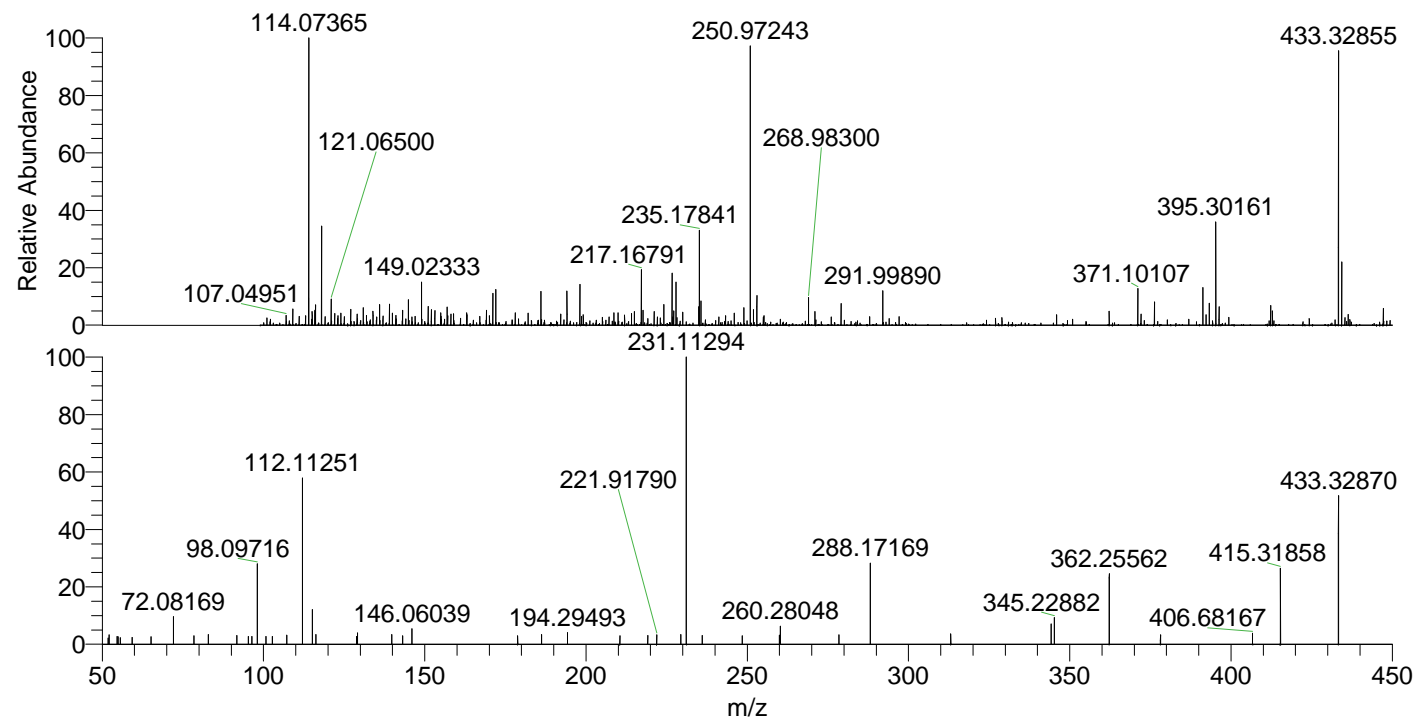
NL: 6.63E6
 Base Peak m/z= 433.32477-433.33343 F:
 FTMS + p ESI Full ms [100.00-1500.00]
 MS Hcurta

NL: 1.33E6
 Base Peak m/z= 217.16629-217.17063 F:
 FTMS + p ESI Full ms [100.00-1500.00]
 MS Hcurta

NL: 6.55E5
 Base Peak m/z= 50.00000-1500.00000 F:
 FTMS + p ESI d Full ms2
 433.33@hcd35.00 [50.00-460.00] MS
 Hcurta

Hcurta#2268-2273 RT: 5.66-5.67 AV: 2
 F: FTMS + p ESI d Full ms2 433.33 ...
 m/z= 50.00000-1000.00000

m/z	Intensity	Relative
51.87398	1420.2	2.22
52.11864	2109.8	3.29
54.57563	1725.5	2.69
54.94422	1649.7	2.57
55.64193	1493.4	2.33
59.24032	1516.4	2.37
65.11506	1699.6	2.65
72.08169	6201.2	9.68
78.41572	1871.8	2.92
82.94270	2190.7	3.42
91.75265	1974.8	3.08
95.26843	1800.3	2.81
96.40628	1775.7	2.77
98.09716	18136.0	28.30
100.78872	1782.1	2.78
102.77902	1816.5	2.83
107.23539	2054.2	3.21
112.11251	37482.7	58.49
115.12338	7839.7	12.23
116.23122	2180.6	3.40
128.82742	1754.3	2.74
129.13889	2583.5	4.03
139.81695	2231.7	3.48
143.17726	1859.2	2.90
146.06039	3529.8	5.51
178.82890	1882.1	2.94
186.19680	2199.8	3.43
194.29493	2633.0	4.11
210.50486	1862.3	2.91
219.15000	1970.4	3.07
221.91790	2125.9	3.32
229.41011	2157.8	3.37
231.11294	64088.2	100.00
236.07561	2007.8	3.13
248.46197	1874.3	2.92
259.97037	2049.4	3.20
260.28048	4031.4	6.29
278.43129	2128.6	3.32
288.17169	18121.3	28.28
313.11185	2336.6	3.65
344.24645	4520.5	7.05
345.22882	5934.6	9.26
362.20475	1983.1	3.09
362.25562	16410.2	25.61
378.14660	2111.7	3.29
406.68167	2480.6	3.87
415.31858	17565.1	27.41
433.32870	33195.7	51.80
452.61835	2525.8	3.94



NL: 6.41E5
 Hcurta#2275 RT: 5.68
 AV: 1 T: FTMS + p ESI
 Full lock ms
 [100.00-1500.00]

NL: 6.40E4
 Hcurta#2266-2277 RT:
 5.66-5.67 AV: 2 F: FTMS
 + p ESI d Full ms2
 433.33@hcd35.00
 [50.00-460.00]