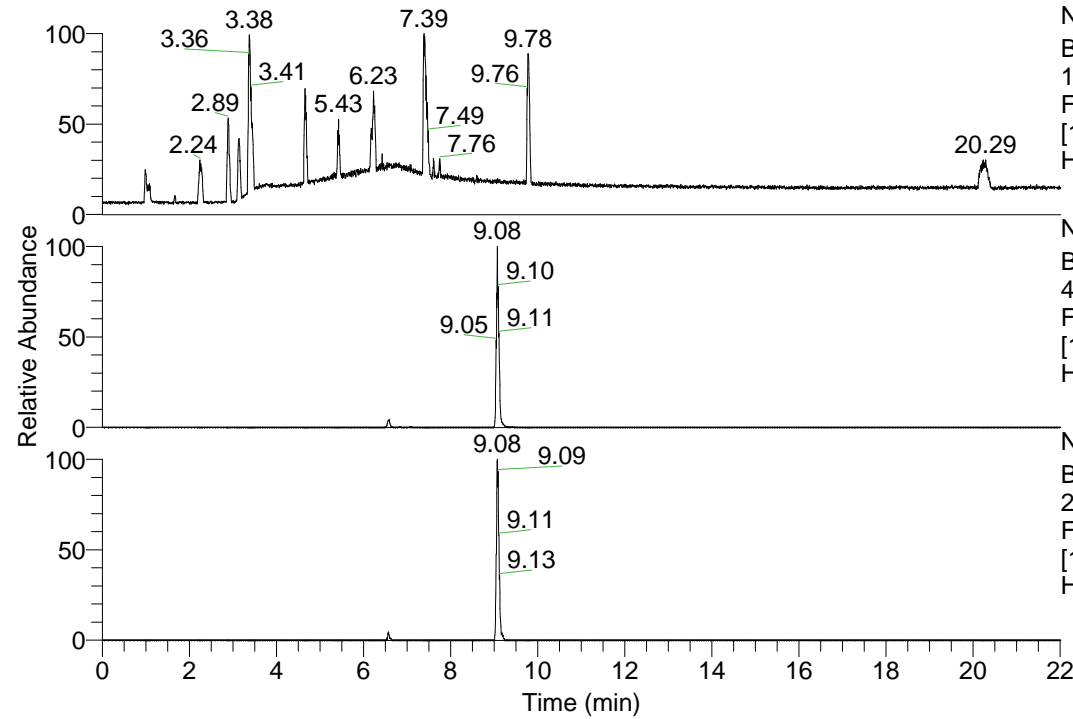


RT: 0.00 - 22.01



NL: 1.13E8  
Base Peak m/z=  
100.00000-1500.00000 F:  
FTMS + p ESI Full ms  
[100.00-1500.00] MS  
Hcurta\_HDX

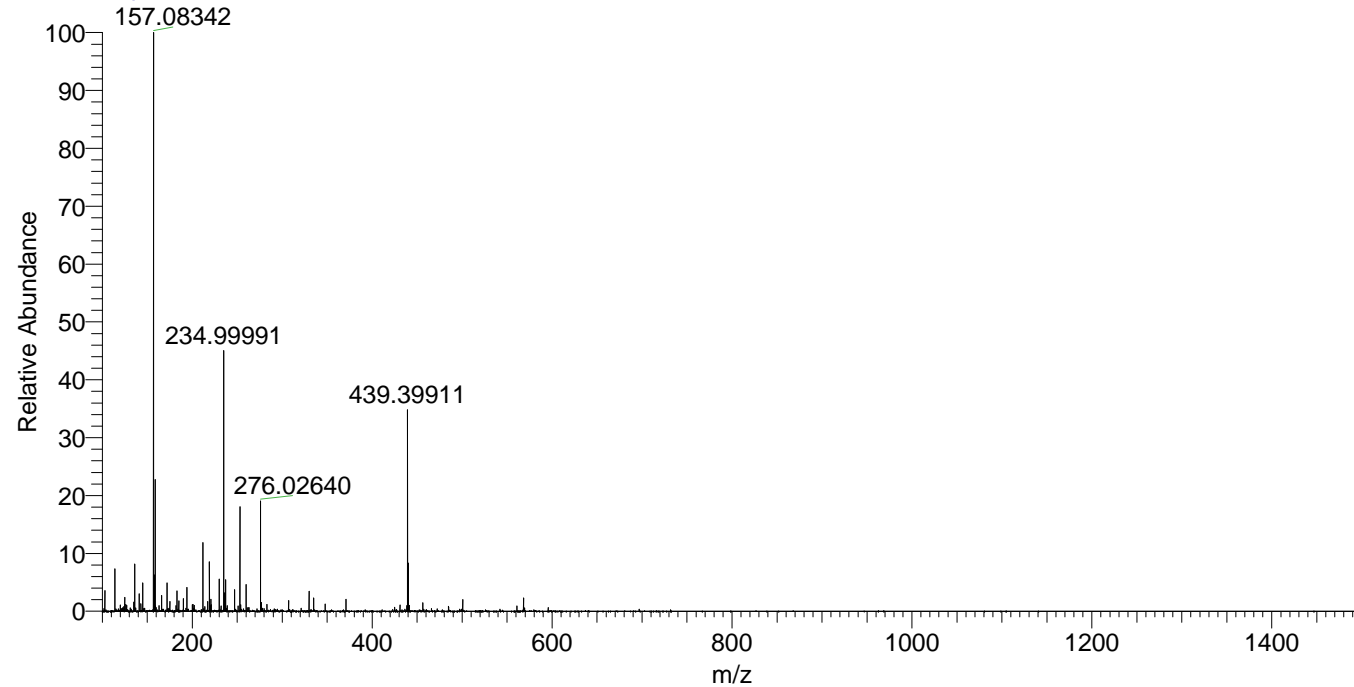
Hcurta\_HDX#1471 RT: 9.08  
T: FTMS + p ESI Full ms [100.00-1500.00]  
m/z= 439.00000-440.00000

m/z	Intensity	Relative	Delta (ppm)	Composition
439.39911	7785473.5	100.00	-0.89	C <sub>24</sub> H <sub>35</sub> <sup>2</sup> H <sub>8</sub> ON <sub>6</sub>
			2.63	C <sub>24</sub> H <sub>33</sub> <sup>2</sup> H <sub>9</sub> ON <sub>6</sub>
			-4.41	C <sub>24</sub> H <sub>37</sub> <sup>2</sup> H <sub>7</sub> ON <sub>6</sub>

NL: 7.79E6  
Base Peak m/z=  
439.39785-439.40225 F:  
FTMS + p ESI Full ms  
[100.00-1500.00] MS  
Hcurta\_HDX

NL: 4.89E5  
Base Peak m/z=  
220.70598-220.70818 F:  
FTMS + p ESI Full ms  
[100.00-1500.00] MS  
Hcurta\_HDX

Hcurta\_HDX #1471 RT: 9.08 AV: 1 NL: 2.23E7  
T: FTMS + p ESI Full ms [100.00-1500.00]



Hcurta\_HDX #1471 RT: 9.08 AV: 1 NL: 7.77E6  
T: FTMS + p ESI Full ms [100.00-1500.00]

