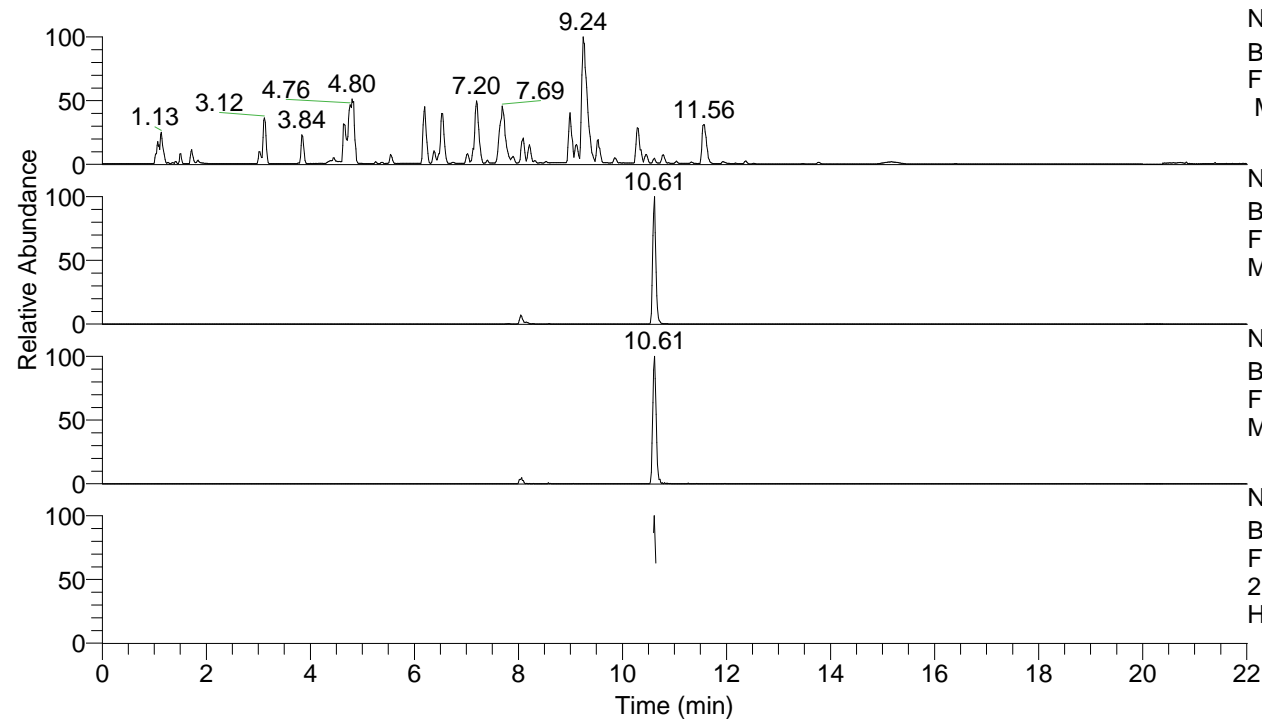


RT: 0.00 - 22.01



NL: 8.52E7
 Base Peak m/z= 100.00000-1500.00000
 F: FTMS + p ESI Full ms [100.00-1500.00]
 MS Hcurta

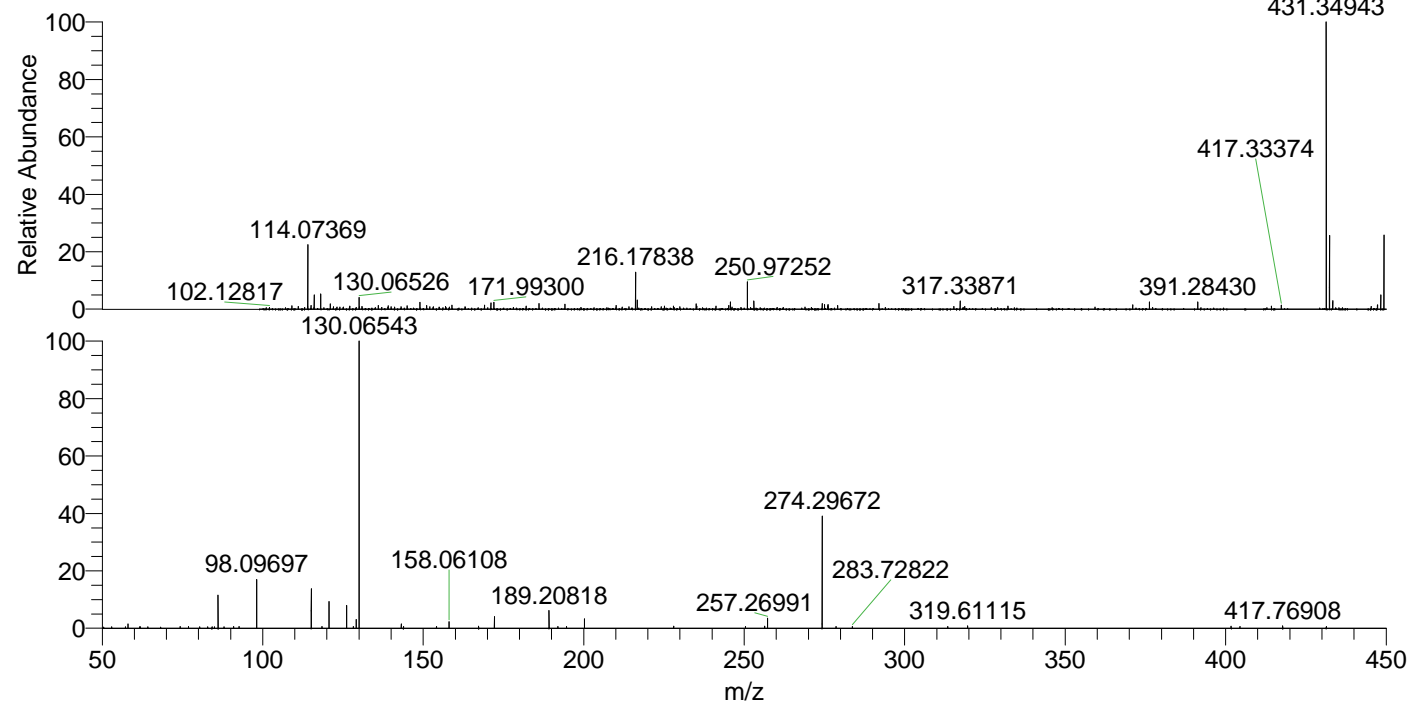
NL: 4.09E6
 Base Peak m/z= 431.34553-431.35415 F:
 FTMS + p ESI Full ms [100.00-1500.00]
 MS Hcurta

NL: 5.19E5
 Base Peak m/z= 216.17667-216.18099 F:
 FTMS + p ESI Full ms [100.00-1500.00]
 MS Hcurta

NL: 1.99E5
 Base Peak m/z= 50.00000-1500.00000 F:
 FTMS + p ESI d Full ms2
 216.18@hcd35.00 [50.00-460.00] MS
 Hcurta

Hcurta#4254-4271 RT: 10.60-10.64 AV: 3
 F: FTMS + p ESI d Full ms2 216.18 ...
 m/z= 50.00000-1000.00000

m/z	Intensity	Relative
52.90350	800.2	0.52
58.06609	2252.3	1.45
61.92867	848.4	0.55
74.26254	918.1	0.59
76.85824	935.5	0.60
82.89701	817.6	0.53
84.20913	795.5	0.51
86.09717	17824.1	11.50
87.95546	850.8	0.55
90.95936	1010.7	0.65
92.64296	897.6	0.58
98.09697	26353.6	17.00
115.12328	21328.5	13.76
118.44727	956.0	0.62
120.62592	14428.5	9.31
126.12823	12426.5	8.01
128.22468	899.0	0.58
129.13894	4755.0	3.07
130.06543	155049.6	100.00
143.15424	2441.8	1.57
143.84755	889.2	0.57
154.12529	891.1	0.57
158.06108	3565.6	2.30
167.27293	1048.0	0.68
172.18167	6456.7	4.16
189.20818	9619.5	6.20
191.95533	926.9	0.60
194.62779	938.0	0.60
200.21291	5243.4	3.38
228.03079	1084.3	0.70
250.40174	1013.0	0.65
256.39090	1161.2	0.75
257.26991	5407.9	3.49
274.29672	60339.7	38.92
278.64436	1015.9	0.66
283.72822	968.9	0.62
313.41988	903.4	0.58
319.61115	1261.8	0.81
401.70071	1128.0	0.73
404.46768	968.5	0.62
417.76908	1318.7	0.85
431.36855	1017.7	0.66



NL: 4.02E6
 Hcurta#4261 RT: 10.61
 AV: 1 T: FTMS + p ESI
 Full lock ms
 [100.00-1500.00]

NL: 1.54E5
 Hcurta#4166-4313 RT:
 10.60-10.64 AV: 3 F:
 FTMS + p ESI d Full ms2
 216.18@hcd35.00
 [50.00-460.00]