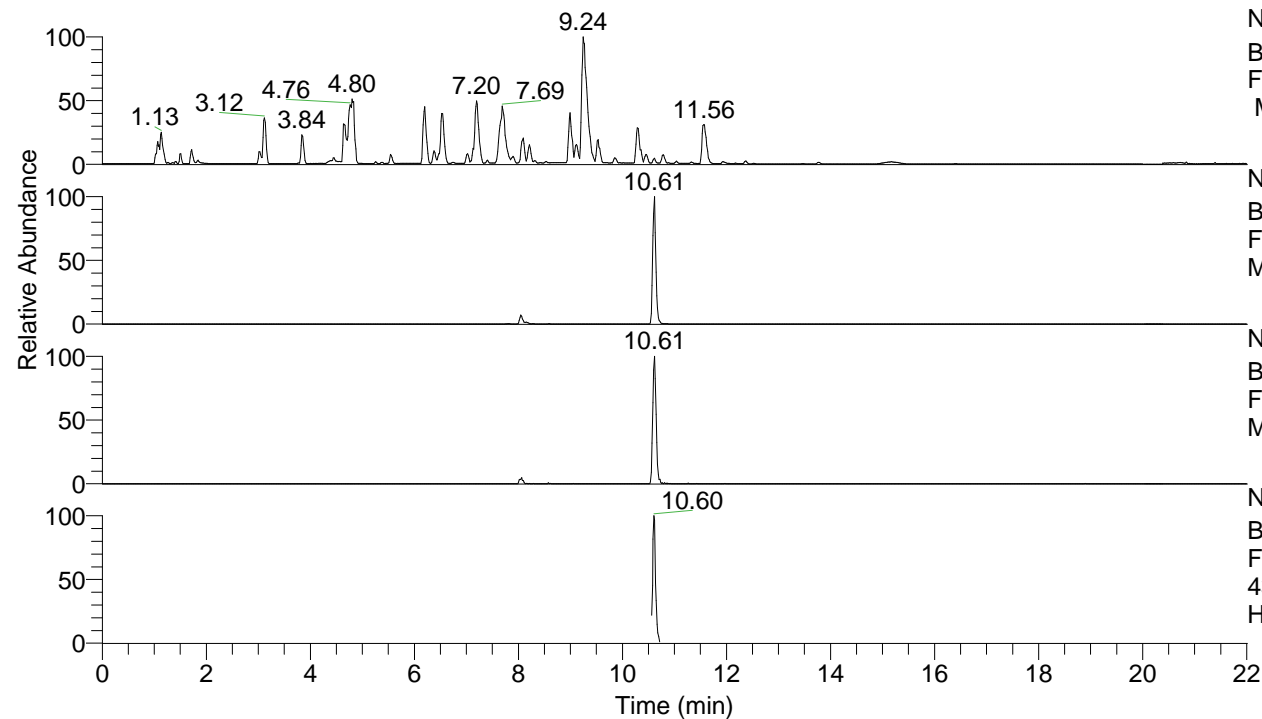


RT: 0.00 - 22.01



NL: 8.52E7
 Base Peak m/z= 100.00000-1500.00000
 F: FTMS + p ESI Full ms [100.00-1500.00]
 MS Hcurta

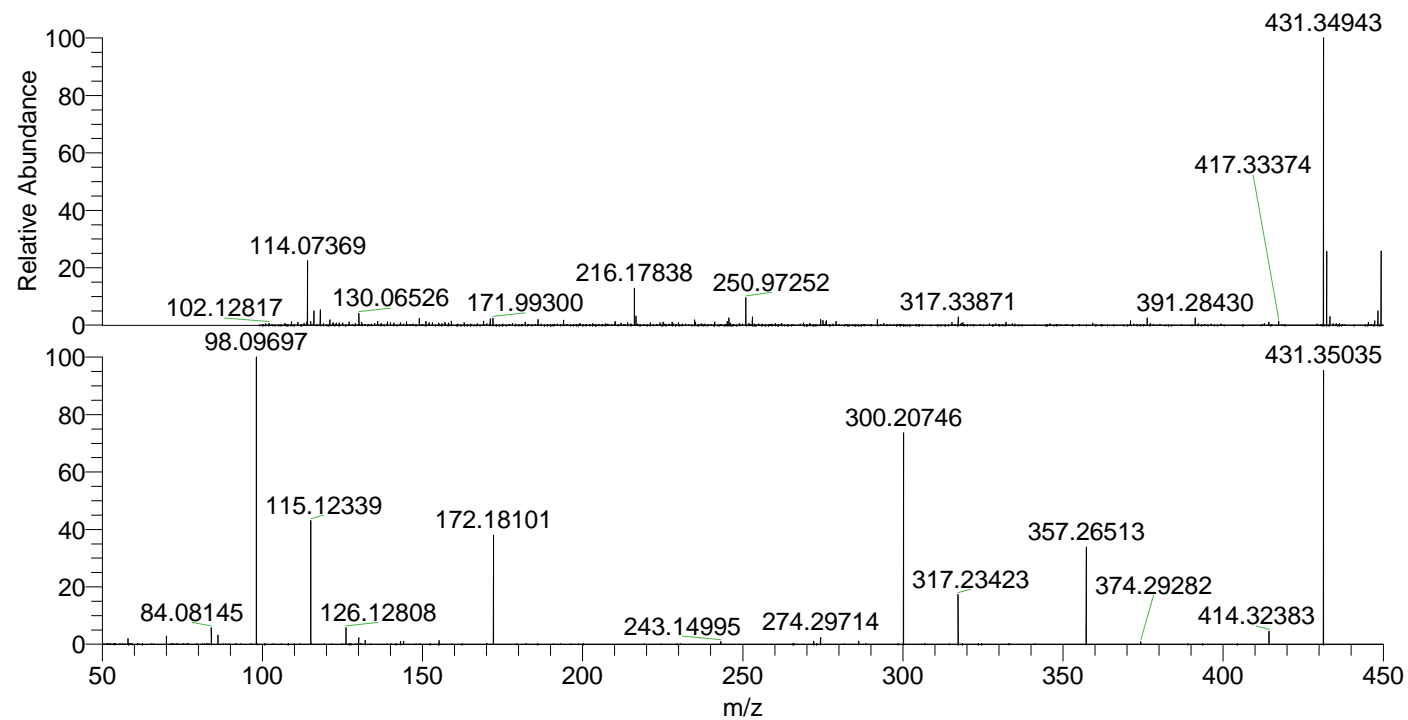
NL: 4.09E6
 Base Peak m/z= 431.34553-431.35415 F:
 FTMS + p ESI Full ms [100.00-1500.00]
 MS Hcurta

NL: 5.19E5
 Base Peak m/z= 216.17667-216.18099 F:
 FTMS + p ESI Full ms [100.00-1500.00]
 MS Hcurta

NL: 4.99E5
 Base Peak m/z= 50.00000-1500.00000 F:
 FTMS + p ESI d Full ms2
 431.35@hcd35.00 [50.00-460.00] MS
 Hcurta

Hcurta#4241-4302 RT: 10.56-10.72 AV:
 F: FTMS + p ESI d Full ms2 431.35 ...
 m/z= 50.00000-1000.00000

m/z	Intensity	Relative
58.06595	3781.1	1.93
70.06591	5624.0	2.87
84.08145	11388.6	5.81
86.09704	6144.9	3.14
98.09697	195856.0	100.00
115.12339	85719.5	43.77
126.12808	11275.2	5.76
130.06569	4572.4	2.33
132.14975	2773.7	1.42
143.15434	1877.5	0.96
144.08127	2152.1	1.10
144.13863	1321.1	0.67
155.15463	2555.4	1.30
172.18101	74991.8	38.29
243.14995	1911.3	0.98
272.17684	2059.4	1.05
274.29714	4700.6	2.40
286.19123	2121.2	1.08
300.20746	149091.8	76.12
317.23423	33962.9	17.34
357.26513	66924.9	34.17
374.29282	1743.6	0.89
414.32383	8821.4	4.50
431.35035	189489.7	96.75



NL: 4.02E6
 Hcurta#4261 RT: 10.61
 AV: 1 T: FTMS + p ESI
 Full lock ms
 [100.00-1500.00]

NL: 1.95E5
 Hcurta#4205-4313 RT:
 10.56-10.72 AV: 11 F:
 FTMS + p ESI d Full ms2
 431.35@hcd35.00
 [50.00-460.00]