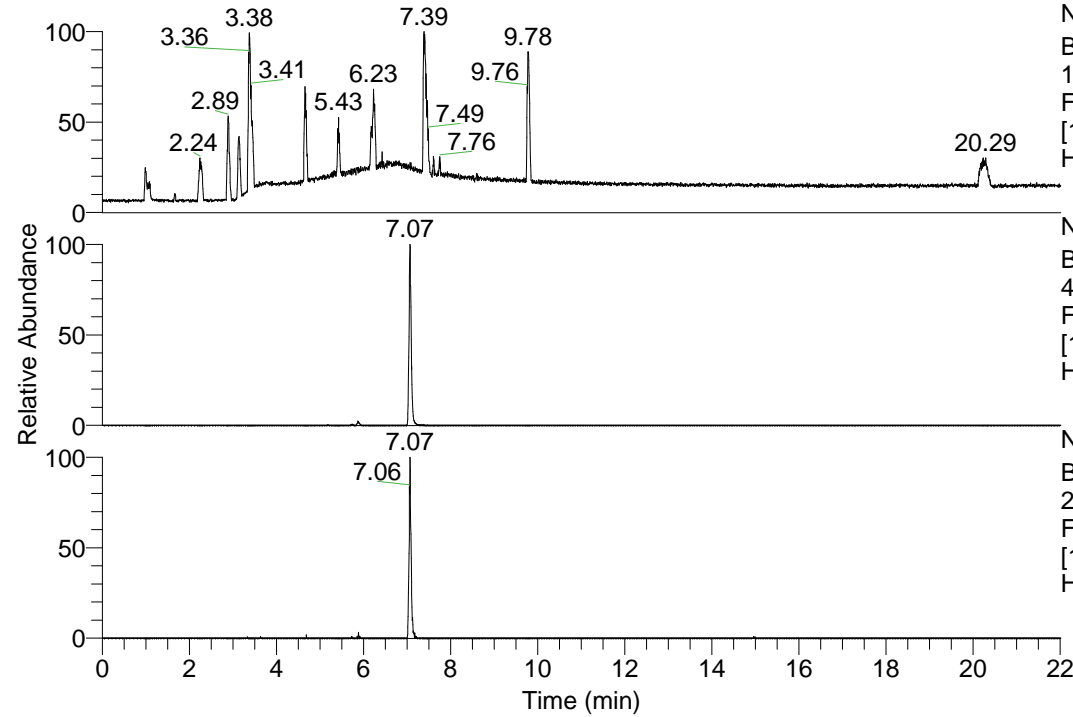


RT: 0.00 - 22.01



NL: 1.13E8
 Base Peak m/z=
 100.00000-1500.00000 F:
 FTMS + p ESI Full ms
 [100.00-1500.00] MS
 Hcurta_HDX

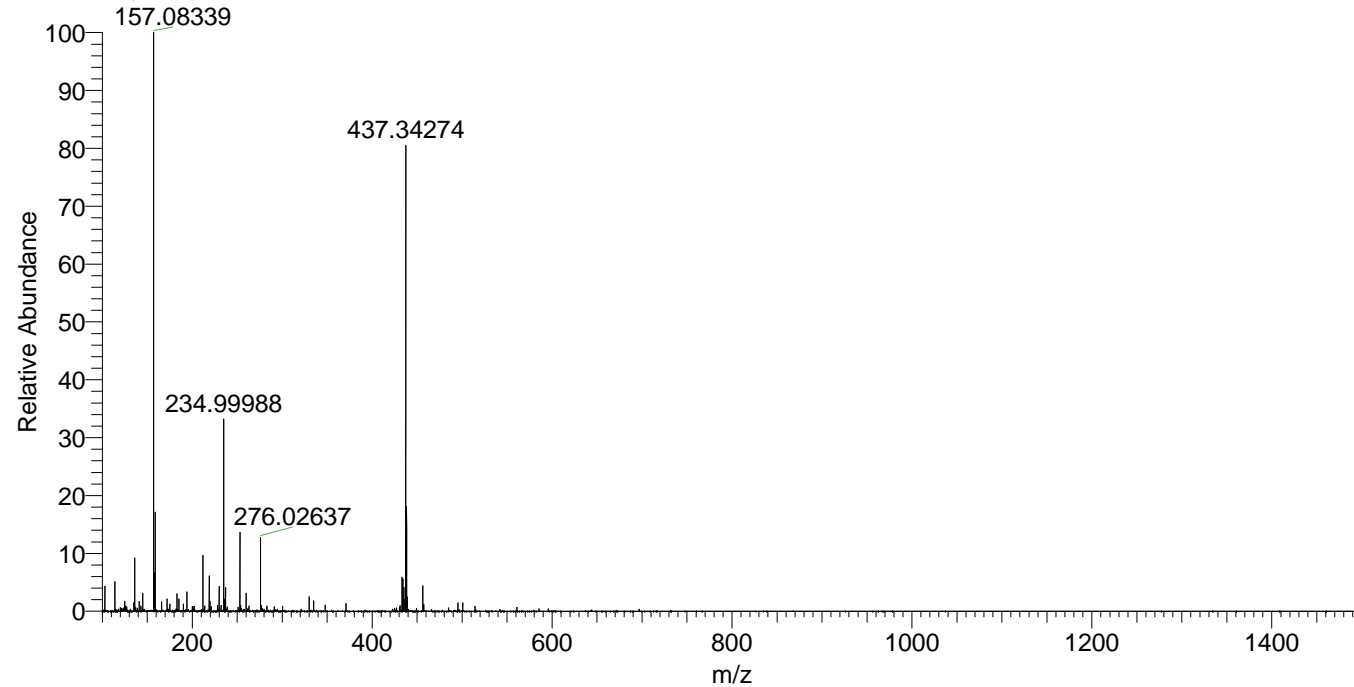
NL: 2.52E7
 Base Peak m/z=
 437.34160-437.34598 F:
 FTMS + p ESI Full ms
 [100.00-1500.00] MS
 Hcurta_HDX

NL: 5.54E5
 Base Peak m/z=
 219.67784-219.68004 F:
 FTMS + p ESI Full ms
 [100.00-1500.00] MS
 Hcurta_HDX

Hcurta_HDX#1135 RT: 7.07
 T: FTMS + p ESI Full ms [100.00-1500.00]
 m/z= 437.00000-438.00000

m/z	Intensity	Relative	Delta (ppm)	Composition
437.34274	25174440.0	100.00	-1.13	C ₂₀ H ₂₉ ² H ₉ O ₅ N ₅
			2.41	C ₂₀ H ₂₇ ² H ₁₀ O ₅ N ₅
			-4.67	C ₂₀ H ₃₁ ² H ₈ O ₅ N ₅

Hcurta_HDX #1135 RT: 7.07 AV: 1 NL: 3.05E7
 T: FTMS + p ESI Full ms [100.00-1500.00]



Hcurta_HDX #1135 RT: 7.07 AV: 1 NL: 2.45E7
 T: FTMS + p ESI Full ms [100.00-1500.00]

