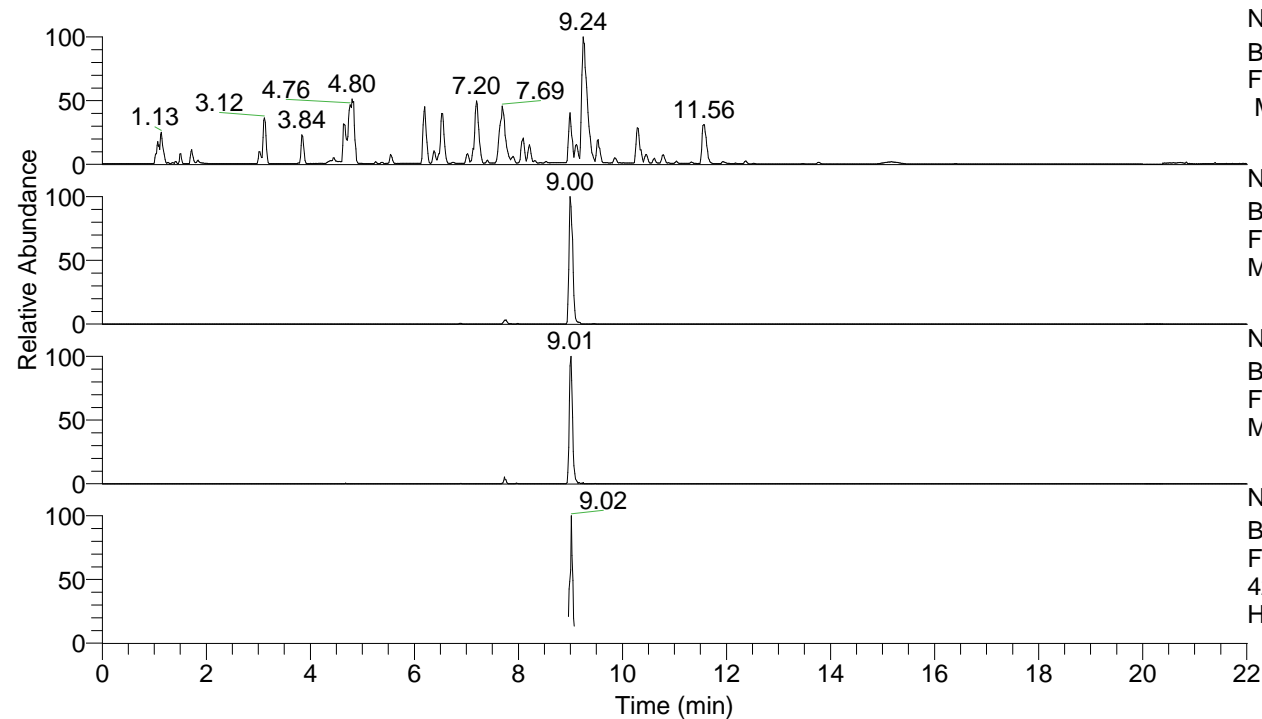


RT: 0.00 - 22.01



NL: 8.52E7
 Base Peak m/z= 100.00000-1500.00000
 F: FTMS + p ESI Full ms [100.00-1500.00]
 MS Hcurta

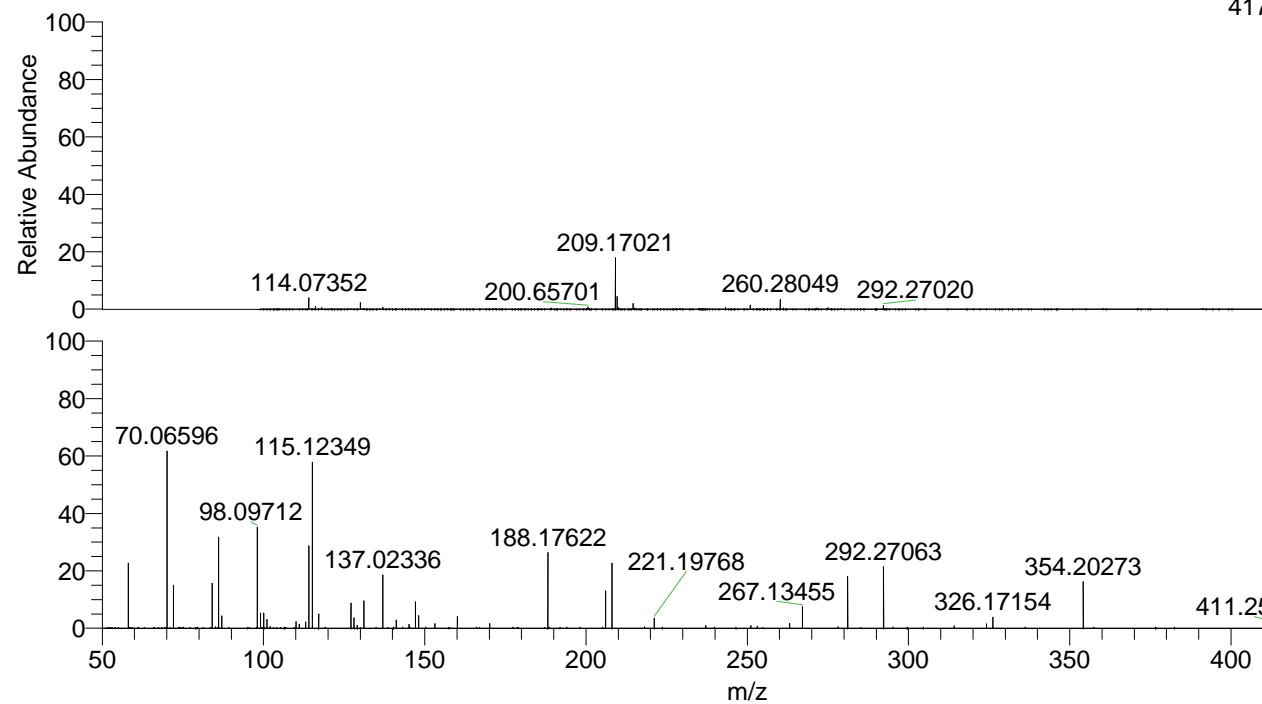
NL: 3.54E6
 Base Peak m/z= 428.28301-428.29157 F:
 FTMS + p ESI Full ms [100.00-1500.00]
 MS Hcurta

NL: 6.80E5
 Base Peak m/z= 214.64541-214.64971 F:
 FTMS + p ESI Full ms [100.00-1500.00]
 MS Hcurta

NL: 3.03E5
 Base Peak m/z= 50.00000-1500.00000 F:
 FTMS + p ESI d Full ms2
 428.29@hcd35.00 [50.00-455.00] MS
 Hcurta

Hcurta#3593-3639 RT: 8.96-9.08 AV: 9
 F: FTMS + p ESI d Full ms2 428.29 ...
 m/z= 50.00000-1000.00000

m/z	Intensity	Relative
58.06603	30699.6	22.96
70.06596	83294.0	62.30
72.08161	20390.5	15.25
84.08149	21218.9	15.87
85.07669	678.6	0.51
86.06081	43702.8	32.69
87.09233	5968.0	4.46
98.09712	47525.8	35.55
99.09223	7154.3	5.35
100.07630	7070.6	5.29
101.10787	4160.2	3.11
102.09182	867.9	0.65
110.09684	3184.8	2.38
111.09278	1898.6	1.42
113.10783	2890.5	2.16
114.09186	39487.0	29.54
115.12349	77370.3	57.87
117.10274	6902.4	5.16
127.12345	11920.6	8.92
128.10734	4901.1	3.67
129.10203	1358.5	1.02
131.11830	12917.6	9.66
137.02336	24956.2	18.67
141.13884	3963.4	2.96
145.13413	1824.4	1.36
147.11348	949.4	0.71
147.13670	12245.1	9.16
148.14464	6071.2	4.54
153.13905	2184.7	1.63
160.14463	5470.7	4.09
170.16565	2226.6	1.67
188.17622	35303.1	26.41
206.08174	17637.3	13.19
208.09713	30373.2	22.72
218.18598	706.3	0.53
221.19768	4734.8	3.54
237.12377	1304.0	0.98
251.13997	1291.4	0.97
253.11843	1045.8	0.78
263.13997	2262.5	1.69
267.13455	10401.5	7.78
281.14990	24297.1	18.17
292.27063	28733.6	21.49
314.17192	1163.9	0.87
324.19297	2087.2	1.56
326.17154	5392.9	4.03
354.20273	21843.0	16.34
411.25978	2975.1	2.23
428.28704	133689.1	100.00



NL: 3.28E7
 Hcurta#3607 RT: 9.00
 AV: 1 T: FTMS + p ESI
 Full ms [100.00-1500.00]

NL: 1.34E5
 Hcurta#3555-3685 RT:
 8.96-9.08 AV: 9 F: FTMS
 + p ESI d Full ms2
 428.29@hcd35.00
 [50.00-455.00]