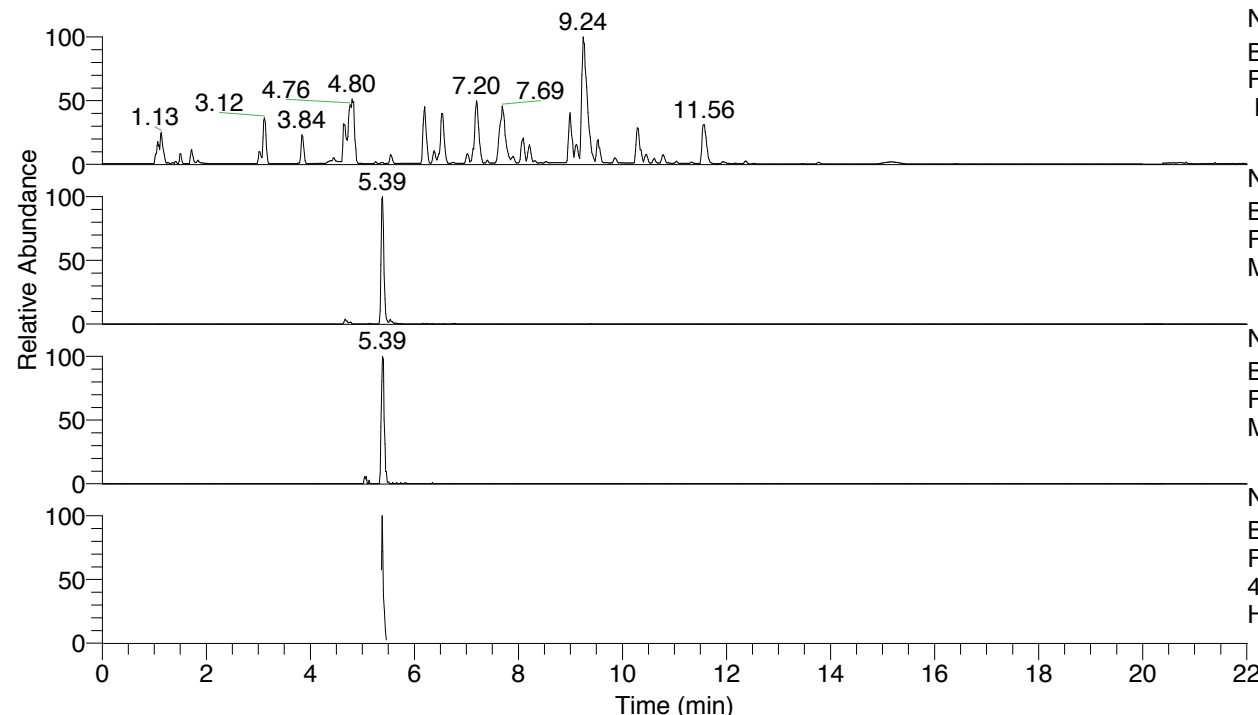


RT: 0.00 - 22.01



NL: 8.52E7  
 Base Peak m/z= 100.00000-1500.00000  
 F: FTMS + p ESI Full ms [100.00-1500.00]  
 MS Hcurta

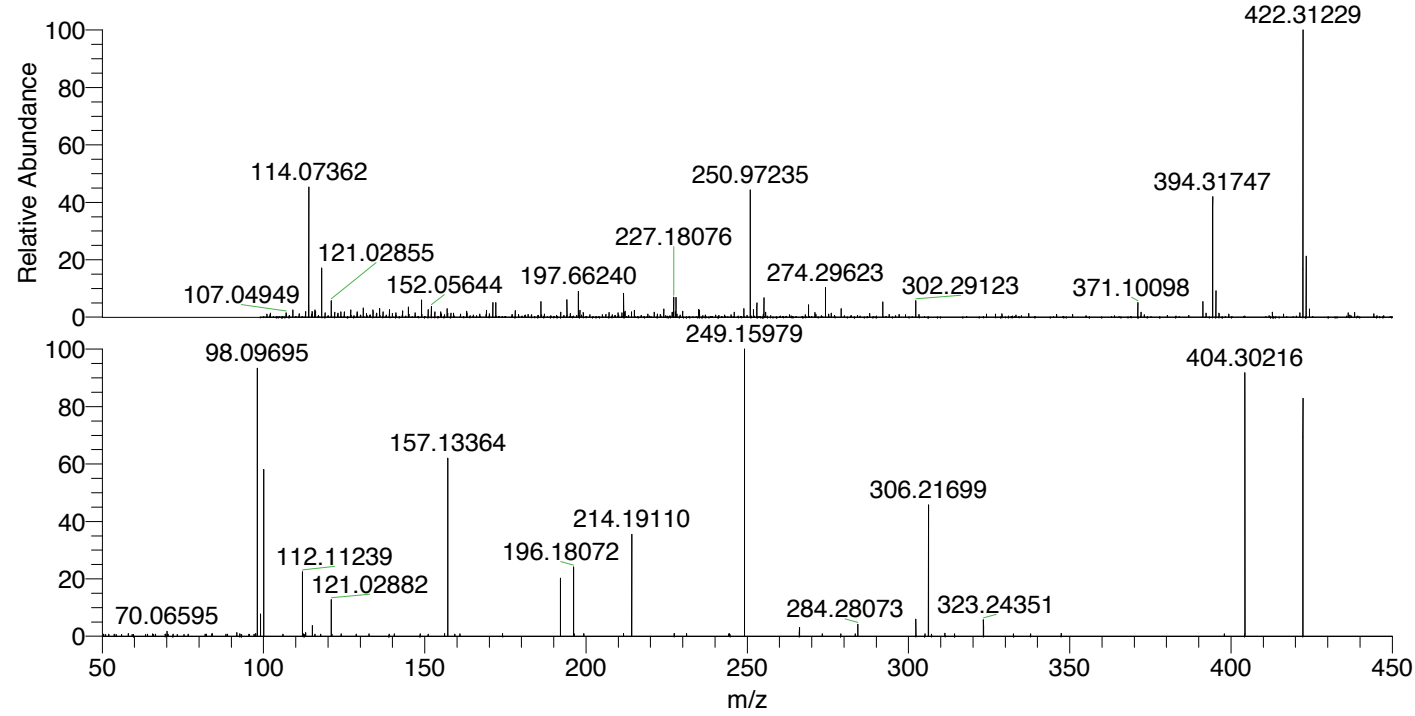
NL: 1.36E6  
 Base Peak m/z= 422.30890-422.31734 F:  
 FTMS + p ESI Full ms [100.00-1500.00]  
 MS Hcurta

NL: 1.19E5  
 Base Peak m/z= 211.65835-211.66259 F:  
 FTMS + p ESI Full ms [100.00-1500.00]  
 MS Hcurta

NL: 1.78E5  
 Base Peak m/z= 50.00000-1500.00000 F:  
 FTMS + p ESI d Full ms2  
 422.31@hcd35.00 [50.00-450.00] MS  
 Hcurta

Hcurta#2152-2190 RT: 5.37-5.46 AV: 7  
 F: FTMS + p ESI d Full ms2 422.31 ...  
 m/z= 50.00000-1000.00000

m/z	Intensity	Relative
58.06575	650.2	0.93
65.67486	553.9	0.79
70.06595	1241.7	1.77
84.08174	639.4	0.91
91.75280	874.0	1.25
92.67930	620.3	0.89
97.11020	546.5	0.78
97.59405	643.9	0.92
98.09087	586.9	0.84
98.09695	65443.4	93.52
99.09233	5514.0	7.88
100.07607	40905.5	58.46
112.11239	15697.9	22.43
112.36349	599.9	0.86
113.10710	954.0	1.36
115.12325	2589.2	3.70
121.02882	9028.4	12.90
124.11140	576.2	0.82
132.76625	564.8	0.81
140.60747	559.1	0.80
148.56819	582.9	0.83
151.05367	550.8	0.79
156.14860	639.5	0.91
157.13364	43451.4	62.09
160.93599	567.2	0.81
174.16102	654.6	0.94
192.10157	14611.1	20.88
196.18072	16916.2	24.17
196.32782	597.3	0.85
199.32537	677.9	0.97
211.66895	635.1	0.91
214.19110	25313.4	36.17
227.37171	655.4	0.94
231.21810	658.9	0.94
244.31982	548.1	0.78
244.43494	632.5	0.90
244.62737	547.8	0.78
249.15979	69976.9	100.00
266.18627	2183.0	3.12
273.29917	599.9	0.86
278.99999	575.3	0.82
283.51992	568.3	0.81
284.28073	2953.5	4.22
302.29172	4278.6	6.11
305.11320	613.0	0.88
306.21699	32058.2	45.81
311.31662	704.9	1.01
314.30179	551.4	0.79
323.24351	4051.0	5.79
332.56080	602.2	0.86
337.85305	581.3	0.83
347.37286	648.2	0.93
397.94332	567.2	0.81
404.30216	64490.3	92.16
422.31208	58009.3	82.90



NL: 1.36E6  
 Hcurta#2161 RT: 5.39  
 AV: 1 T: FTMS + p ESI  
 Full lock ms  
 [100.00-1500.00]

NL: 7.00E4  
 Hcurta#2120-2209 RT:  
 5.37-5.46 AV: 7 F: FTMS  
 + p ESI d Full ms2  
 422.31@hcd35.00  
 [50.00-450.00]

Hcurta#2152-2190 RT: 5.37-5.46 AV: 7

F: FTMS + p ESI d Full ms2 422.31@hcd35.00 [50.00-450.00]

m/z= 50.00000-1000.00000

m/z	Intensity	Relative
50.43318	478.9	0.68
51.01916	434.4	0.62
51.06953	424.0	0.61
51.98797	514.1	0.73
53.76261	510.9	0.73
54.33342	468.9	0.67
55.96755	448.9	0.64
58.06575	650.2	0.93
59.31945	427.6	0.61
59.72579	434.5	0.62
63.49225	441.8	0.63
64.04287	538.0	0.77
65.67486	553.9	0.79
65.95818	425.7	0.61
66.54282	481.5	0.69
69.55255	513.6	0.73
69.70982	474.4	0.68
70.06595	1241.7	1.77
70.25347	443.9	0.63
70.44371	545.8	0.78
71.93763	529.3	0.76
73.30217	467.8	0.67
75.38765	466.8	0.67
76.66603	493.1	0.70
81.87833	536.0	0.77
82.27769	521.9	0.75
83.95725	531.6	0.76
84.08174	639.4	0.91
88.32910	499.1	0.71
88.88223	475.5	0.68
91.75280	874.0	1.25
92.67930	620.3	0.89
93.18000	455.8	0.65
95.54206	535.6	0.77
95.62369	464.9	0.66
97.11020	546.5	0.78
97.59405	643.9	0.92
98.09087	586.9	0.84
98.09695	65443.4	93.52

Hcurta#2152-2190 RT: 5.37-5.46 AV: 7

F: FTMS + p ESI d Full ms2 422.31@hcd35.00 [50.00-450.00]

m/z= 50.00000-1000.00000

m/z	Intensity	Relative
99.09233	5514.0	7.88
100.07607	40905.5	58.46
106.01749	545.3	0.78
112.08295	524.3	0.75
112.11239	15697.9	22.43
112.36349	599.9	0.86
112.63296	454.3	0.65
113.10710	954.0	1.36
115.12325	2589.2	3.70
115.92168	497.6	0.71
117.76379	529.9	0.76
121.02882	9028.4	12.90
121.20441	495.9	0.71
124.11140	576.2	0.82
128.79641	531.0	0.76
132.76625	564.8	0.81
138.93921	530.5	0.76
140.60747	559.1	0.80
148.56819	582.9	0.83
151.05367	550.8	0.79
156.14860	639.5	0.91
157.13364	43451.4	62.09
159.29810	509.1	0.73
160.93599	567.2	0.81
174.16102	654.6	0.94
192.10157	14611.1	20.88
196.18072	16916.2	24.17
196.32782	597.3	0.85
199.32537	677.9	0.97
211.66895	635.1	0.91
214.19110	25313.4	36.17
227.37171	655.4	0.94
231.21810	658.9	0.94
244.31982	548.1	0.78
244.43494	632.5	0.90
244.62737	547.8	0.78
249.15979	69976.9	100.00
266.18627	2183.0	3.12
273.29917	599.9	0.86

Hcurta#2152-2190 RT: 5.37-5.46 AV: 7

F: FTMS + p ESI d Full ms2 422.31@hcd35.00 [50.00-450.00]

m/z= 50.00000-1000.00000

m/z	Intensity	Relative
278.99999	575.3	0.82
283.51992	568.3	0.81
284.28073	2953.5	4.22
302.29172	4278.6	6.11
305.11320	613.0	0.88
306.21699	32058.2	45.81
307.16130	537.1	0.77
311.31662	704.9	1.01
314.30179	551.4	0.79
323.24351	4051.0	5.79
332.56080	602.2	0.86
337.85305	581.3	0.83
347.37286	648.2	0.93
397.94332	567.2	0.81
404.30216	64490.3	92.16
422.31208	58009.3	82.90