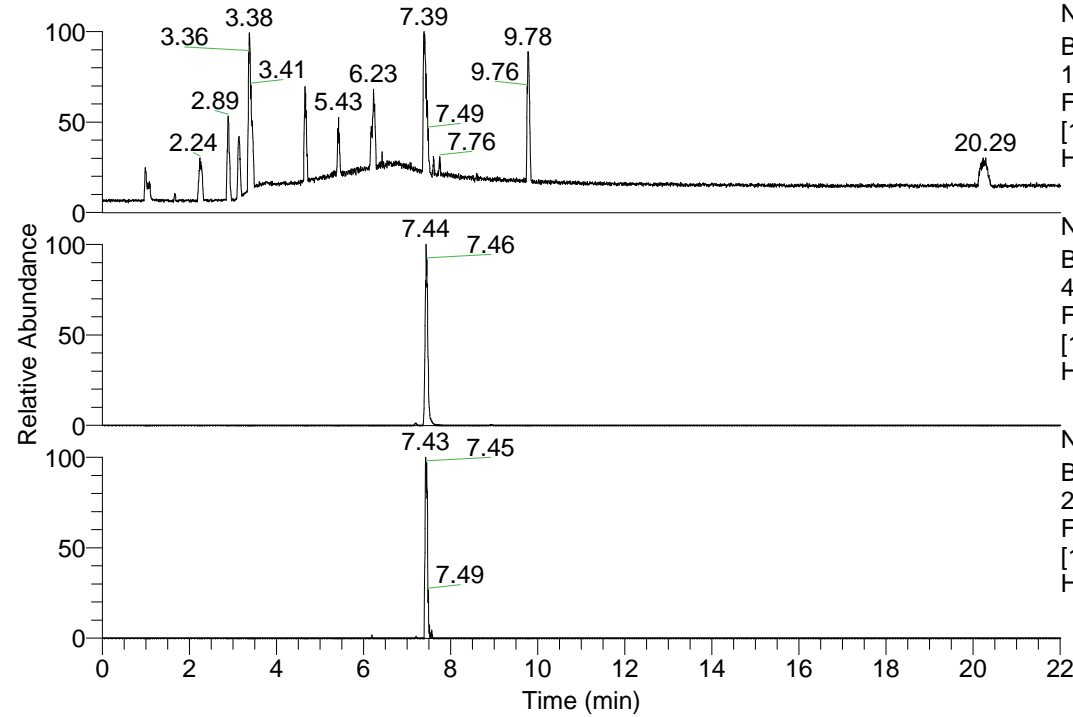


RT: 0.00 - 22.01



NL: 1.13E8
Base Peak m/z=
100.00000-1500.00000 F:
FTMS + p ESI Full ms
[100.00-1500.00] MS
Hcurta_HDX

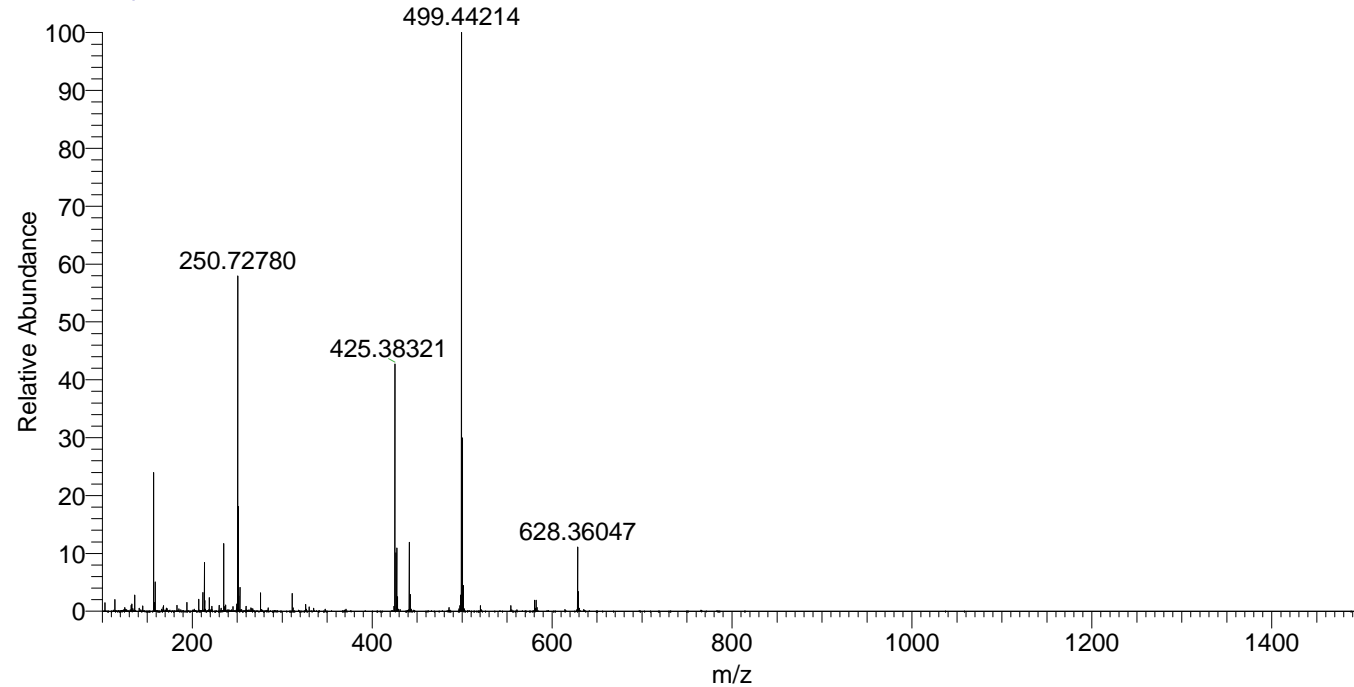
Hcurta_HDX#1198 RT: 7.44
T: FTMS + p ESI Full ms [100.00-1500.00]
m/z= 427.00000-428.00000

m/z	Intensity	Relative	Delta (ppm)	Composition
427.36258	9244783.0	100.00	-1.25	C ₂₂ H ₃₁ ² H ₈ O ₂ N ₆
			2.37	C ₂₂ H ₂₉ ² H ₉ O ₂ N ₆
			-4.88	C ₂₂ H ₃₃ ² H ₇ O ₂ N ₆

NL: 9.24E6
Base Peak m/z=
427.36153-427.36581 F:
FTMS + p ESI Full ms
[100.00-1500.00] MS
Hcurta_HDX

NL: 3.48E5
Base Peak m/z=
214.68781-214.68995 F:
FTMS + p ESI Full ms
[100.00-1500.00] MS
Hcurta_HDX

Hcurta_HDX #1198 RT: 7.44 AV: 1 NL: 8.47E7
T: FTMS + p ESI Full ms [100.00-1500.00]



Hcurta_HDX #1198 RT: 7.44 AV: 1 NL: 3.62E7
T: FTMS + p ESI Full ms [100.00-1500.00]

