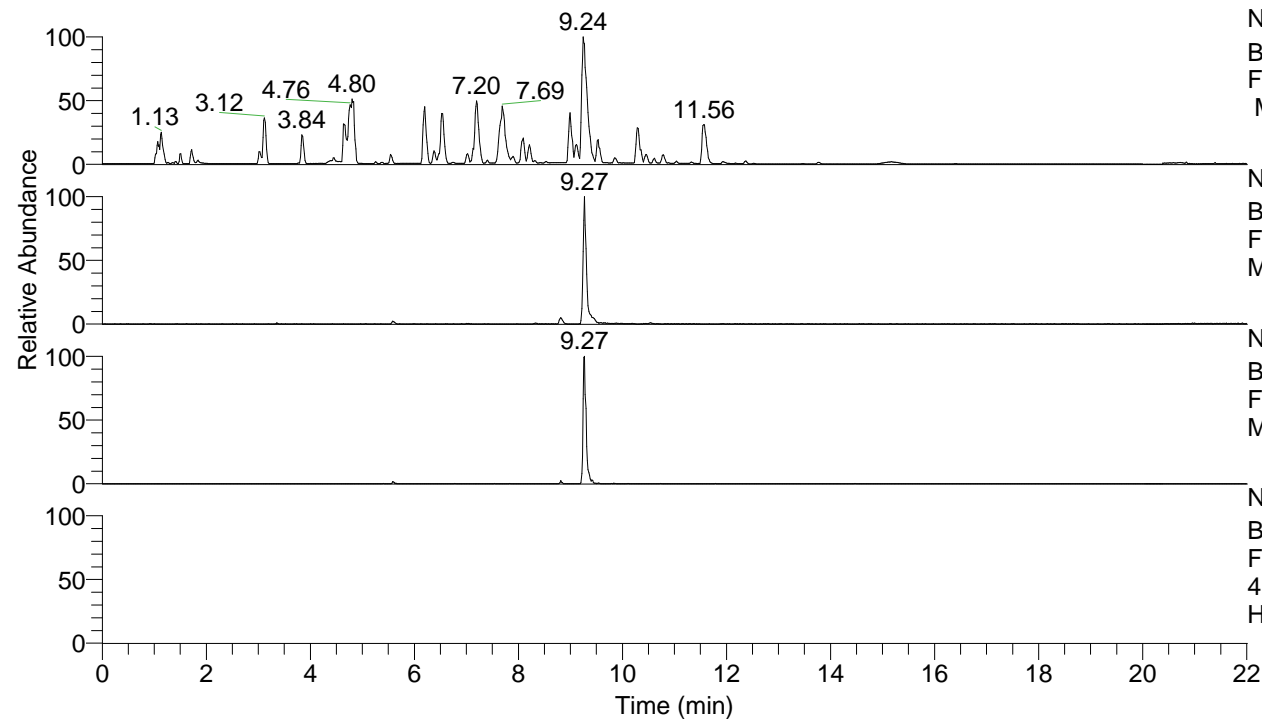


RT: 0.00 - 22.01



NL: 8.52E7
 Base Peak m/z= 100.00000-1500.00000
 F: FTMS + p ESI Full ms [100.00-1500.00]
 MS Hcurta

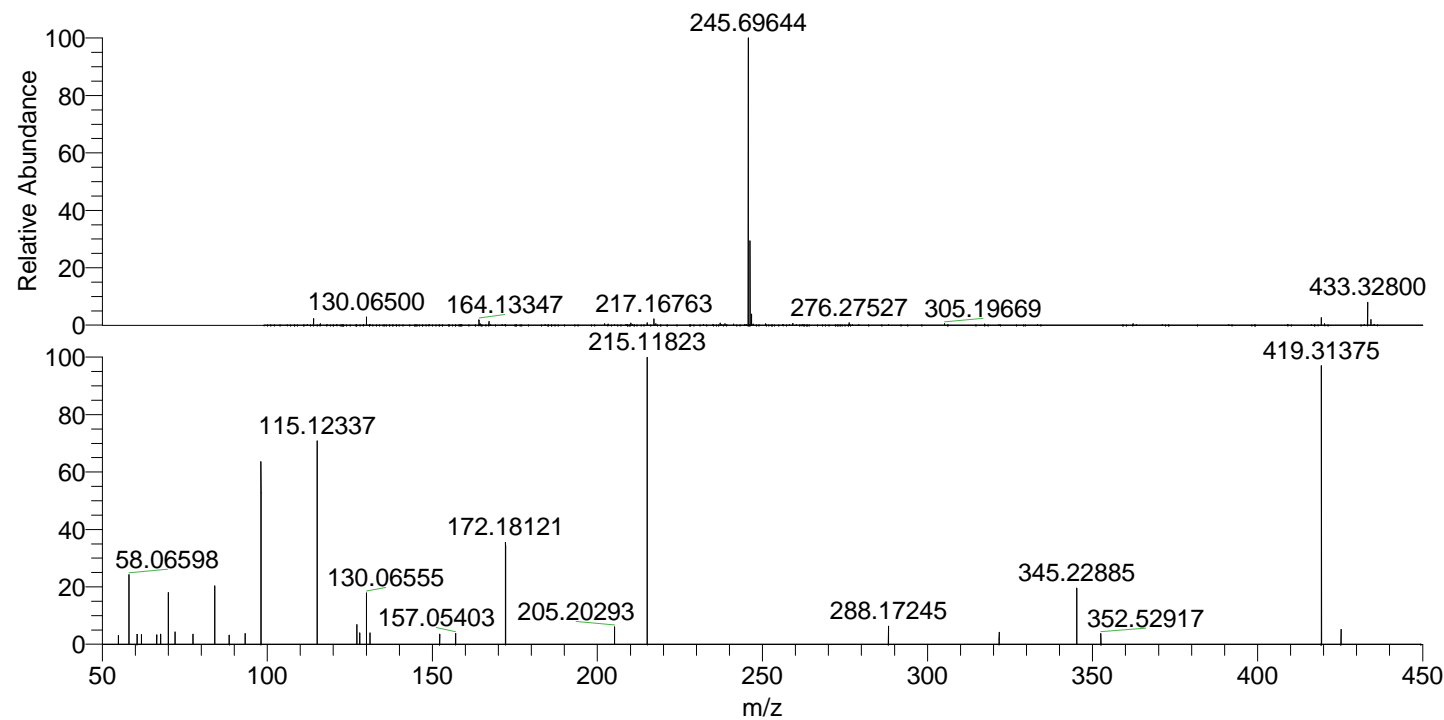
NL: 1.41E6
 Base Peak m/z= 419.30926-419.31764 F:
 FTMS + p ESI Full ms [100.00-1500.00]
 MS Hcurta

NL: 3.69E5
 Base Peak m/z= 210.15854-210.16274 F:
 FTMS + p ESI Full ms [100.00-1500.00]
 MS Hcurta

NL: 1.13E5
 Base Peak m/z= 50.00000-1500.00000 F:
 FTMS + p ESI d Full ms2
 419.31@hcd35.00 [50.00-445.00] MS
 Hcurta

Hcurta#3726 RT: 9.28
 F: FTMS + p ESI d Full ms2 419.31 ...
 m/z= 50.00000-1000.00000

m/z	Intensity	Relative
54.93426	3231.1	2.87
58.06598	25768.1	22.85
60.56962	3802.6	3.37
61.86567	3635.5	3.22
66.43895	3317.5	2.94
66.52660	3525.3	3.13
67.71981	3871.7	3.43
70.06598	19954.3	17.70
72.08147	4730.3	4.19
77.53396	3836.1	3.40
84.08150	22972.7	20.37
88.49321	3400.9	3.02
93.29649	4104.9	3.64
98.09710	67983.9	60.29
115.12337	78393.5	69.52
127.12339	7338.9	6.51
127.98747	4431.9	3.93
130.06555	19116.5	16.95
131.11804	4373.5	3.88
152.21074	3754.9	3.33
157.05403	4106.4	3.64
172.18121	39562.7	35.08
205.20293	6708.8	5.95
215.11823	112766.5	100.00
288.17245	6759.1	5.99
321.71921	4401.4	3.90
345.22885	21016.7	18.64
352.52917	4025.1	3.57
419.31375	106722.6	94.64
425.31003	5605.1	4.97



NL: 5.27E7
 Hcurta#3721 RT: 9.27
 AV: 1 T: FTMS + p
 ESI Full ms
 [100.00-1500.00]

NL: 1.06E5
 Hcurta#3695 RT: 9.28
 AV: 1 F: FTMS + p
 ESI d Full ms2
 419.31@hcd35.00
 [50.00-445.00]