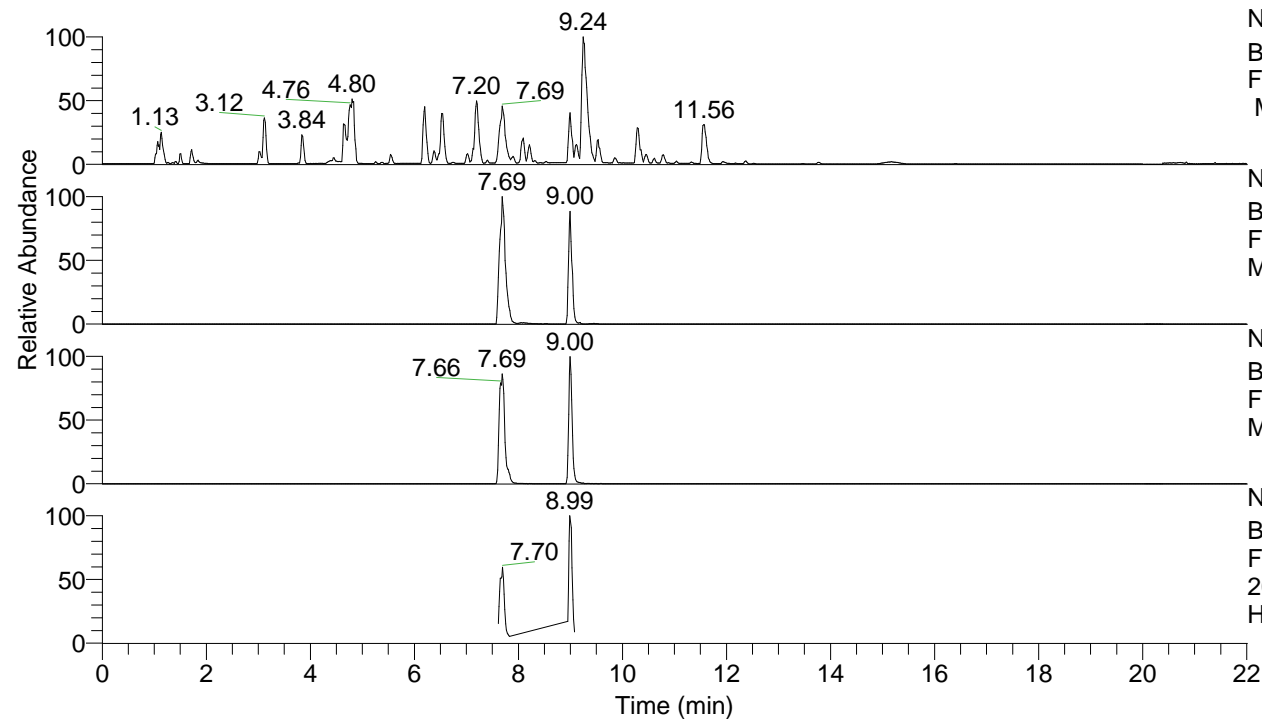


RT: 0.00 - 22.01



NL: 8.52E7
 Base Peak m/z= 100.00000-1500.00000
 F: FTMS + p ESI Full ms [100.00-1500.00]
 MS Hcurta

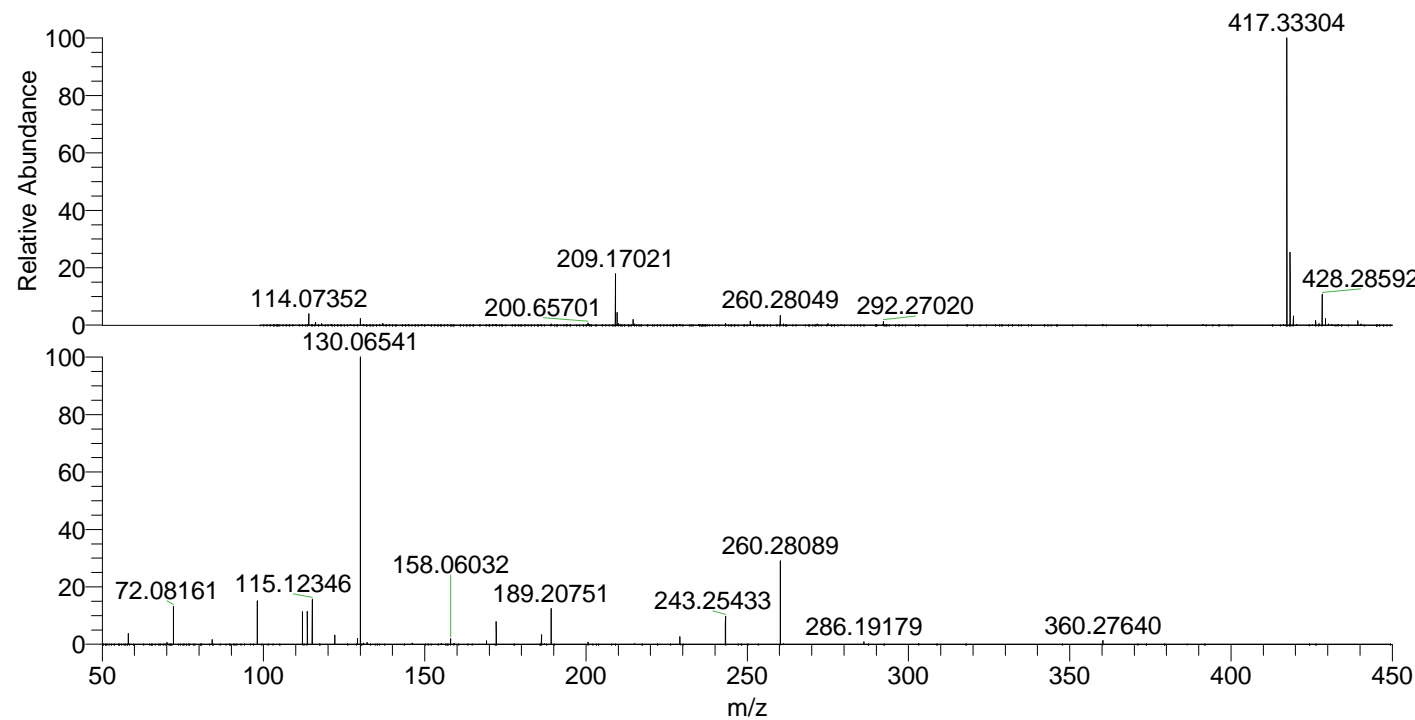
NL: 3.90E7
 Base Peak m/z= 417.33001-417.33835 F:
 FTMS + p ESI Full ms [100.00-1500.00]
 MS Hcurta

NL: 6.25E6
 Base Peak m/z= 209.16891-209.17309 F:
 FTMS + p ESI Full ms [100.00-1500.00]
 MS Hcurta

NL: 2.14E6
 Base Peak m/z= 50.00000-1500.00000 F:
 FTMS + p ESI d Full ms2
 209.17@hcd35.00 [50.00-445.00] MS
 Hcurta

Hcurta#3587-3642 RT: 8.95-9.08 AV: 9
 F: FTMS + p ESI d Full ms2 209.17 ...
 m/z= 50.00000-1000.00000

m/z	Intensity	Relative
58.06602	36561.0	3.68
70.06597	5577.2	0.56
72.08161	128431.0	12.94
84.08150	15404.9	1.55
98.09707	146921.5	14.80
112.11259	109242.4	11.01
113.61797	112505.8	11.34
115.12346	150879.8	15.20
122.13119	30832.9	3.11
129.13886	20932.1	2.11
130.06541	992507.3	100.00
132.14978	5485.0	0.55
158.06032	19642.4	1.98
169.16993	11836.3	1.19
172.18111	76360.4	7.69
186.19659	31882.1	3.21
189.20751	122151.3	12.31
200.65776	7341.5	0.74
229.13383	25923.9	2.61
243.25433	94375.2	9.51
260.28089	283791.4	28.59
286.19179	8160.5	0.82
360.27640	12222.4	1.23



NL: 3.28E7
 Hcurta#3607 RT: 9.00
 AV: 1 T: FTMS + p ESI
 Full ms [100.00-1500.00]

NL: 9.62E5
 Hcurta#3535-3674 RT:
 8.95-9.08 AV: 9 F: FTMS
 + p ESI d Full ms2
 209.17@hcd35.00
 [50.00-445.00]