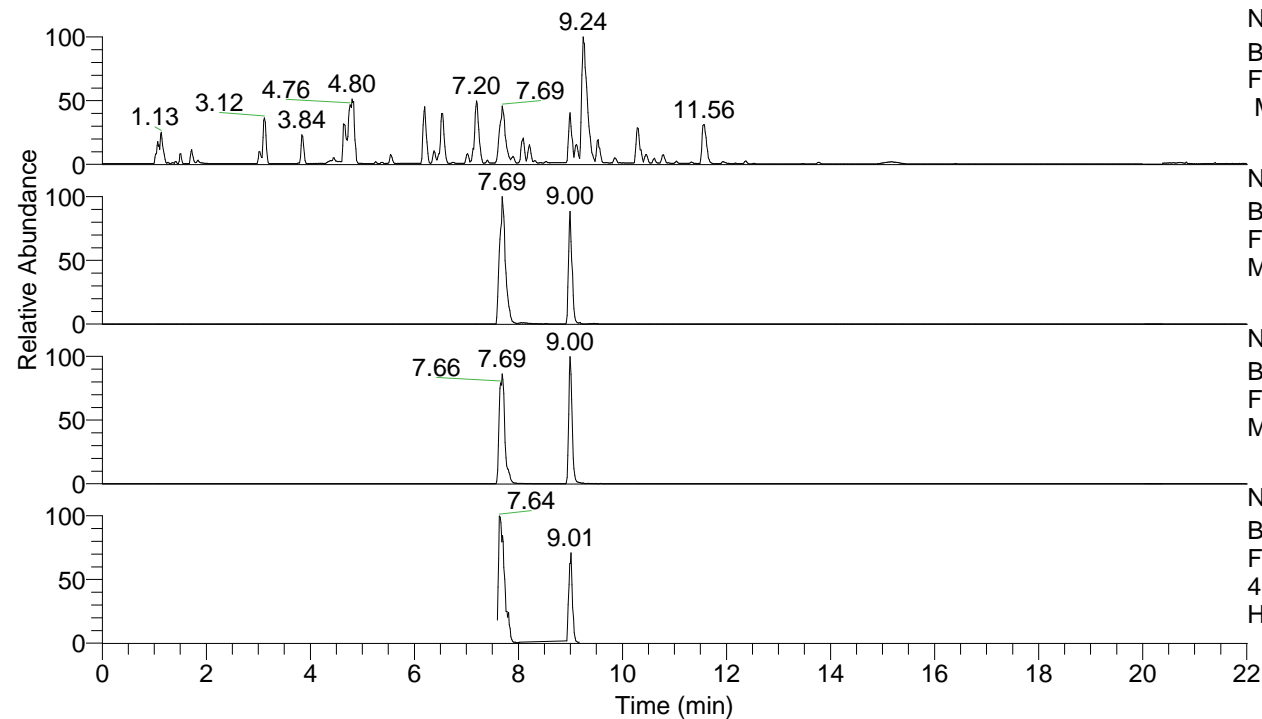
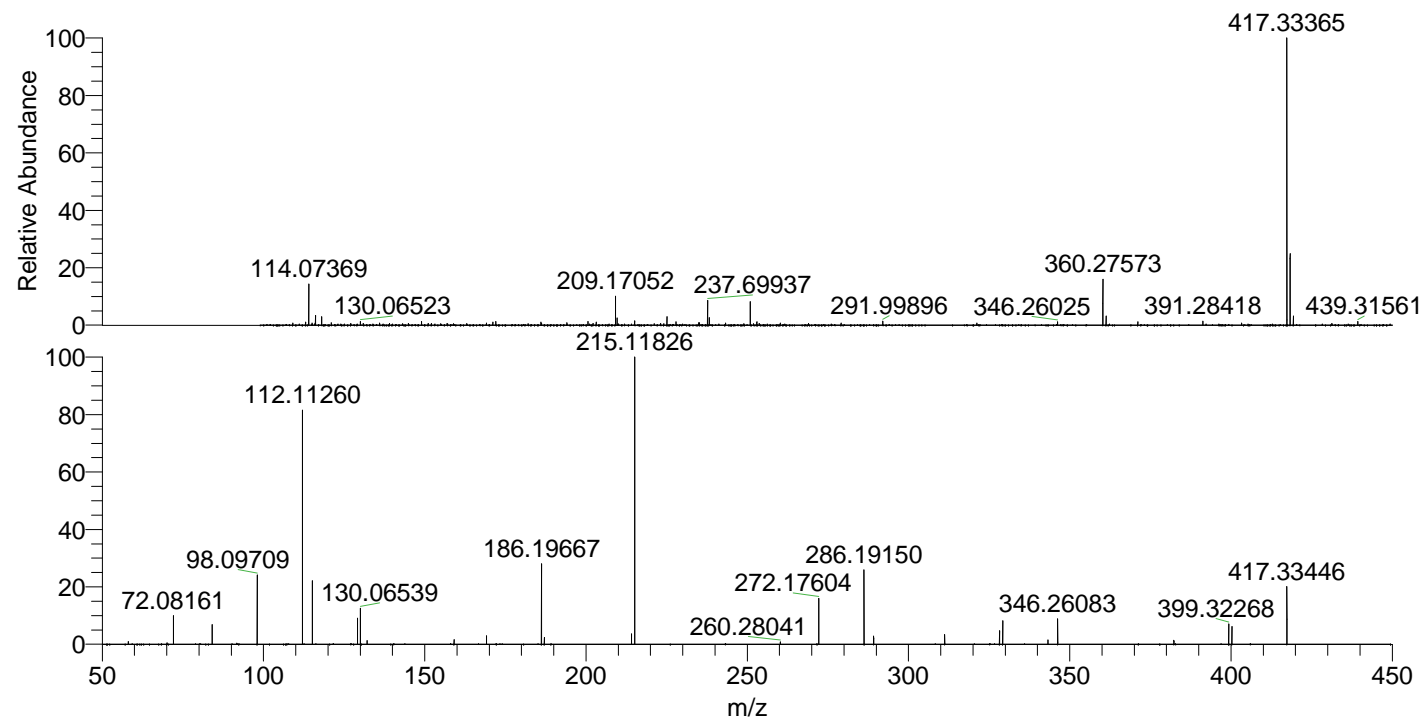


RT: 0.00 - 22.01



Hcurta#3122-3152 RT: 7.78-7.86 AV: 6  
 F: FTMS + p ESI d Full ms2 417.33 ...  
 m/z= 50.00000-1000.00000

m/z	Intensity	Relative
58.06608	9115.6	0.98
70.06599	5873.2	0.63
72.08162	106370.7	11.42
84.08156	68482.8	7.35
98.09710	247523.4	26.57
112.11262	745387.7	80.02
115.12351	206114.0	22.13
129.13904	94323.6	10.13
130.06545	121208.8	13.01
132.14977	11504.3	1.24
159.09217	14178.1	1.52
169.17015	31498.3	3.38
186.19670	240855.4	25.86
187.08682	23014.4	2.47
214.13425	43480.4	4.67
215.11830	931449.2	100.00
260.28103	12480.6	1.34
272.17614	182064.5	19.55
286.19151	209949.3	22.54
289.20269	29986.3	3.22
311.22354	37718.3	4.05
328.25039	56978.0	6.12
329.23431	95287.6	10.23
343.25047	16043.8	1.72
346.26065	109606.7	11.77
382.29682	17965.4	1.93
399.32295	84297.3	9.05
400.30764	71560.8	7.68
417.33451	204780.3	21.99



NL: 6.78E6  
 Hcurta#3133 RT: 7.81  
 AV: 1 T: FTMS + p ESI  
 Full lock ms  
 [100.00-1500.00]

NL: 8.42E5  
 Hcurta#3125-3156 RT:  
 7.79-7.86 AV: 5 F: FTMS  
 + p ESI d Full ms2  
 417.33@hcd35.00  
 [50.00-445.00]