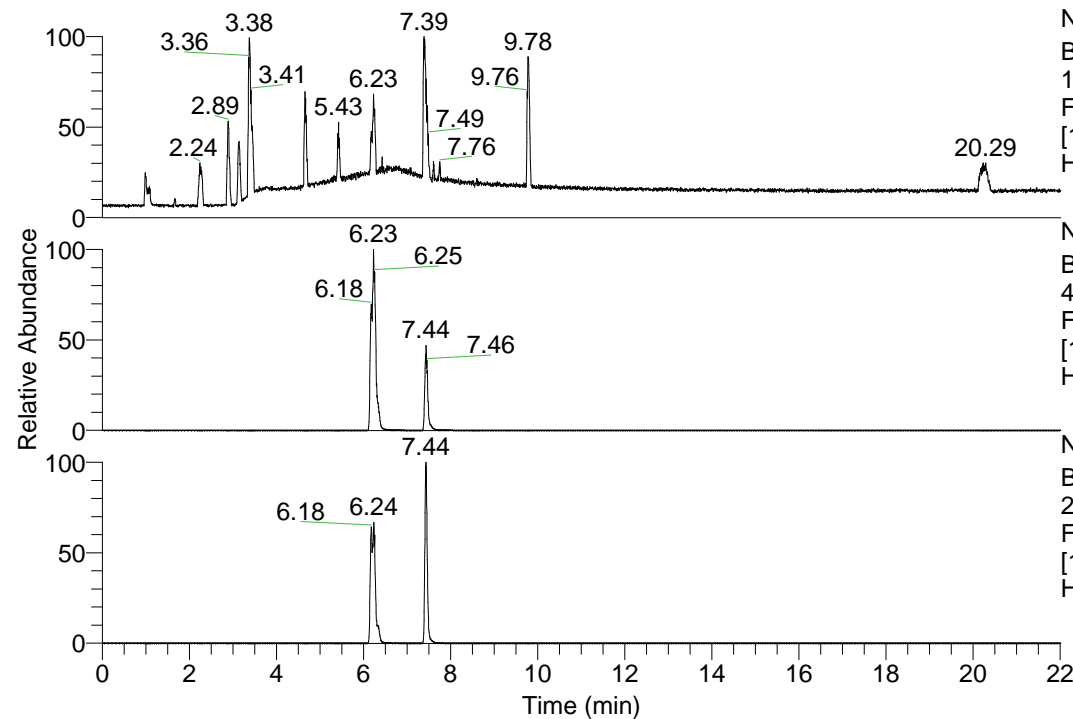


RT: 0.00 - 22.01



NL: 1.13E8  
 Base Peak m/z=  
 100.00000-1500.00000 F:  
 FTMS + p ESI Full ms  
 [100.00-1500.00] MS  
 Hcurta\_HDX

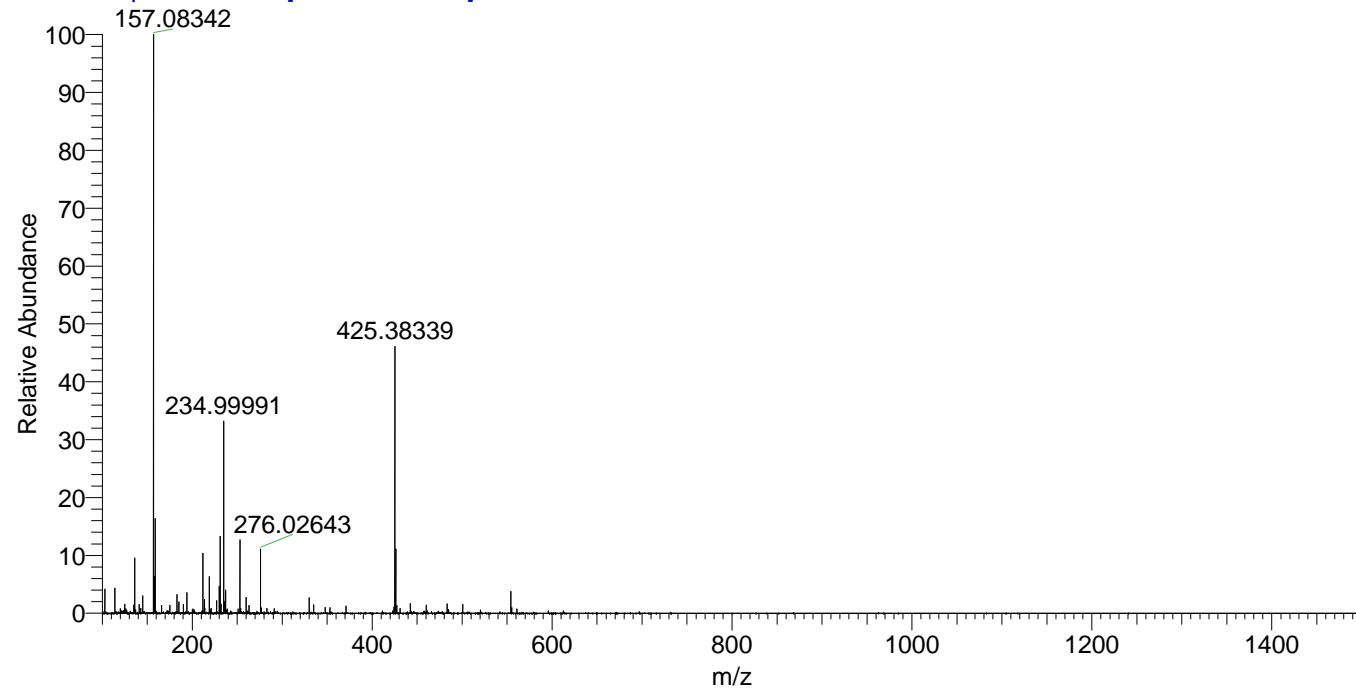
Hcurta\_HDX#1010 RT: 6.32  
 T: FTMS + p ESI Full ms [100.00-1500.00]  
 m/z= 425.00000-426.00000

m/z	Intensity	Relative	Delta (ppm)	Composition
425.38339	13272239.0	100.00	-1.08	C <sub>23</sub> H <sub>33</sub> <sup>2</sup> H <sub>8</sub> ON <sub>6</sub>
			2.56	C <sub>23</sub> H <sub>31</sub> <sup>2</sup> H <sub>9</sub> ON <sub>6</sub>
			-4.72	C <sub>23</sub> H <sub>35</sub> <sup>2</sup> H <sub>7</sub> ON <sub>6</sub>

NL: 7.72E7  
 Base Peak m/z=  
 425.38227-425.38653 F:  
 FTMS + p ESI Full ms  
 [100.00-1500.00] MS  
 Hcurta\_HDX

NL: 7.14E6  
 Base Peak m/z=  
 213.69818-213.70032 F:  
 FTMS + p ESI Full ms  
 [100.00-1500.00] MS  
 Hcurta\_HDX

Hcurta\_HDX #1010 RT: 6.32 AV: 1 NL: 2.88E7  
 T: FTMS + p ESI Full ms [100.00-1500.00]



Hcurta\_HDX #1010 RT: 6.32 AV: 1 NL: 1.33E7  
 T: FTMS + p ESI Full ms [100.00-1500.00]

