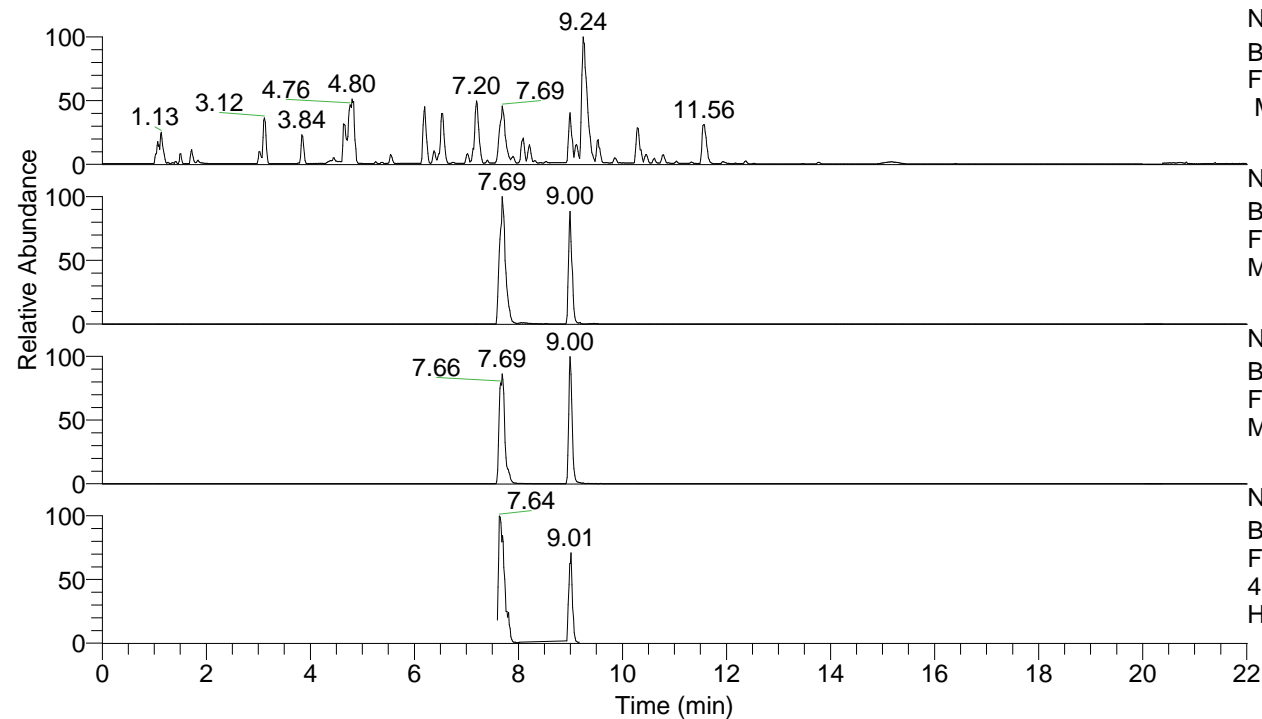


RT: 0.00 - 22.01



NL: 8.52E7
 Base Peak m/z= 100.00000-1500.00000
 F: FTMS + p ESI Full ms [100.00-1500.00]
 MS Hcurta

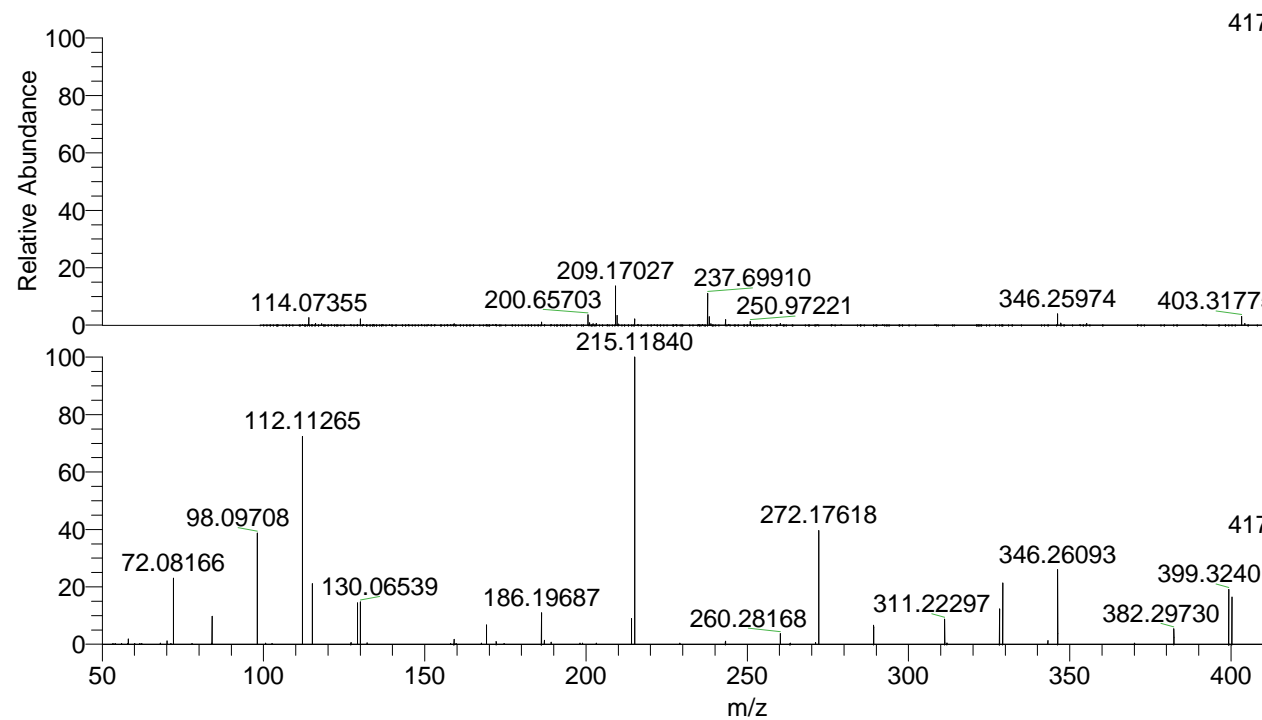
NL: 3.90E7
 Base Peak m/z= 417.33001-417.33835 F:
 FTMS + p ESI Full ms [100.00-1500.00]
 MS Hcurta

NL: 6.25E6
 Base Peak m/z= 209.16891-209.17309 F:
 FTMS + p ESI Full ms [100.00-1500.00]
 MS Hcurta

NL: 5.91E6
 Base Peak m/z= 50.00000-1500.00000 F:
 FTMS + p ESI d Full ms2
 417.33@hcd35.00 [50.00-445.00] MS
 Hcurta

Hcurta#3098-3104 RT: 7.72-7.74 AV: 2
 F: FTMS + p ESI d Full ms2 417.33@h ...
 m/z= 50.00000-1000.00000

m/z	Intensity	Relative
58.06608	56286.1	1.78
70.06606	35715.6	1.13
72.08166	730820.5	23.17
84.08155	298215.3	9.45
98.09708	1218645.4	38.63
112.11265	2262935.0	71.74
115.12349	664594.7	21.07
115.13065	22998.1	0.73
127.12355	19321.2	0.61
129.13896	446003.3	14.14
130.06539	452771.9	14.35
132.14993	16681.7	0.53
159.09228	54383.4	1.72
169.17031	205578.7	6.52
172.18061	29006.0	0.92
186.19687	337735.8	10.71
187.08713	43875.1	1.39
189.20757	20656.4	0.65
214.13426	281677.7	8.93
215.11840	3154277.8	100.00
243.25392	33989.4	1.08
260.28168	114077.3	3.62
271.19202	18148.7	0.58
272.17618	1249631.0	39.62
289.20255	203312.0	6.45
311.22297	274102.3	8.69
328.25021	378966.0	12.01
329.23428	661188.0	20.96
343.24989	40681.7	1.29
346.26093	794556.6	25.19
382.29730	166901.5	5.29
399.32401	591341.0	18.75
400.30857	516413.9	16.37
417.33435	1133534.5	35.94



NL: 3.72E7
 Hcurta#3085 RT: 7.69
 AV: 1 T: FTMS + p ESI
 Full ms [100.00-1500.00]

NL: 3.06E6
 Hcurta#3098-3108 RT:
 7.72-7.74 AV: 2 F: FTMS
 + p ESI d Full ms2
 417.33@hcd35.00
 [50.00-445.00]