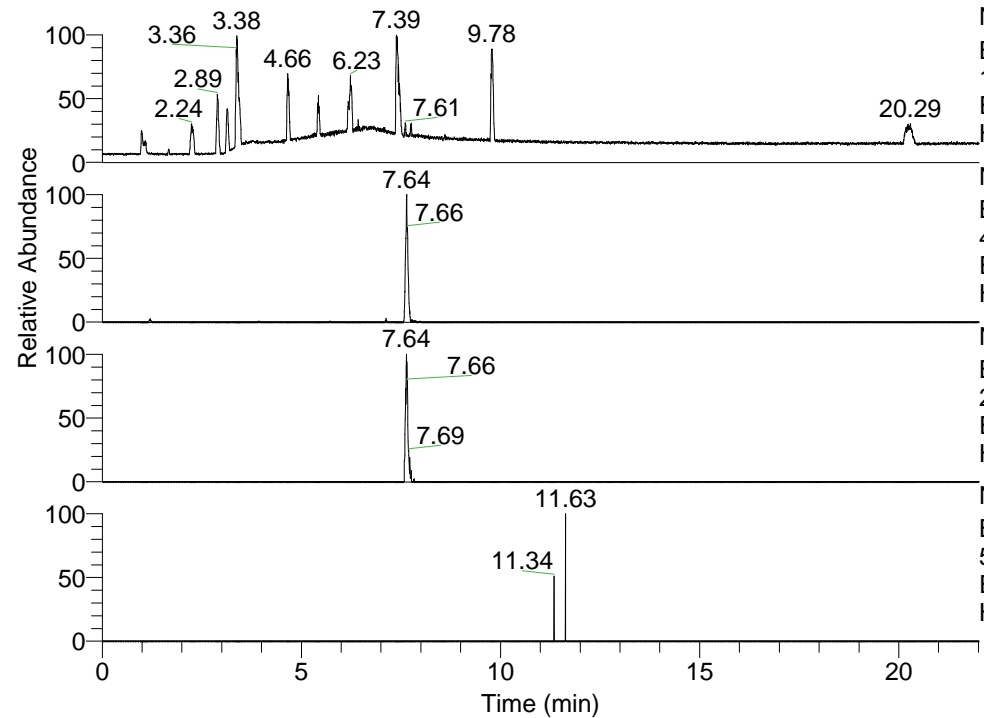


RT: 0.00 - 22.01



NL: 1.13E8
 Base Peak m/z=
 100.00000-1500.00000 F: FTMS + p
 ESI Full ms [100.00-1500.00] MS
 Hcurta_HDX

NL: 4.37E5
 Base Peak m/z=
 420.36194-420.36614 F: FTMS + p
 ESI Full ms [100.00-1500.00] MS
 Hcurta_HDX

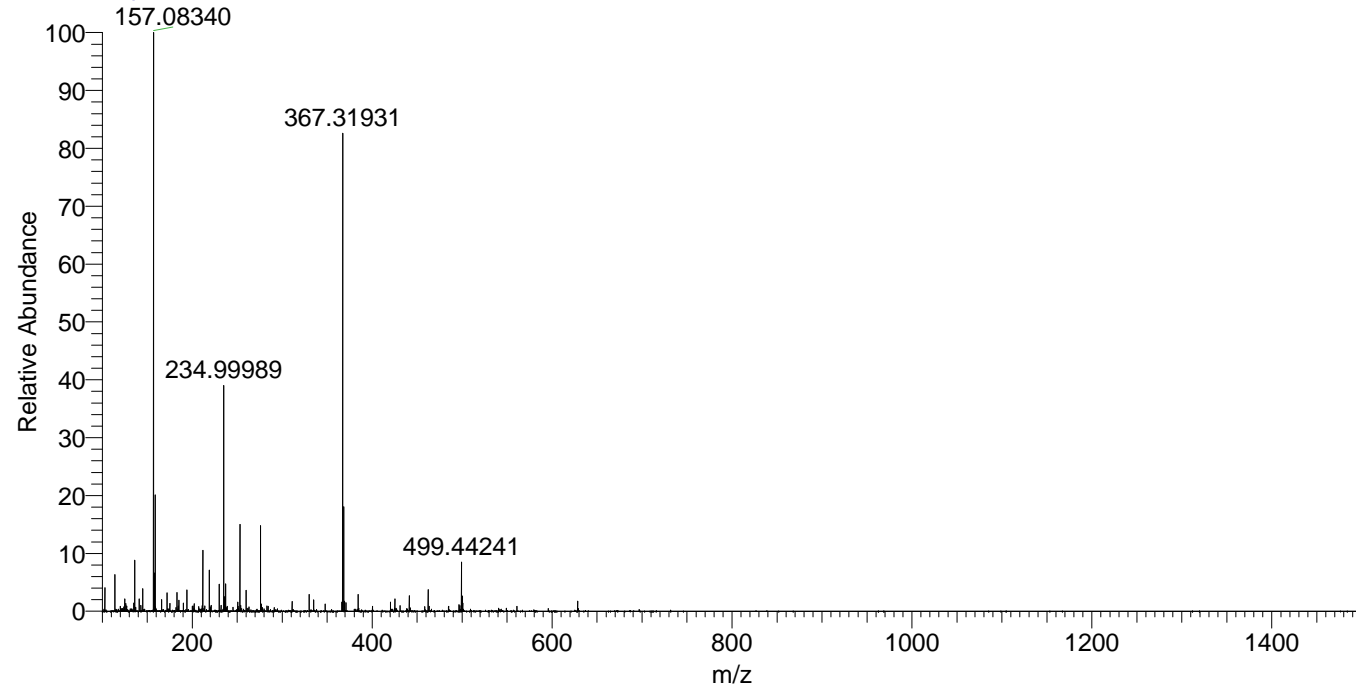
NL: 2.49E5
 Base Peak m/z=
 211.18801-211.19013 F: FTMS + p
 ESI Full ms [100.00-1500.00] MS
 Hcurta_HDX

NL: 5.17E3
 Base Peak m/z=
 535.36050-535.36586 F: FTMS + p
 ESI Full ms [100.00-1500.00] MS
 Hcurta_HDX

Hcurta_HDX#1233 RT: 7.64
 T: FTMS + p ESI Full ms [100.00-1500.00]
 m/z= 420.00000-421.00000

m/z	Intensity	Relative	Delta (ppm)	Composition
420.36298	427093.7	100.00	-1.23	C ₂₄ H ₃₈ ² H ₄ ON ₅
			2.45	C ₂₄ H ₃₆ ² H ₅ ON ₅
			-4.92	C ₂₄ H ₄₀ ² H ₃ ON ₅

Hcurta_HDX #1233 RT: 7.64 AV: 1 NL: 2.60E7
 T: FTMS + p ESI Full ms [100.00-1500.00]



Hcurta_HDX #1233 RT: 7.64 AV: 1 NL: 5.55E5
 T: FTMS + p ESI Full ms [100.00-1500.00]

