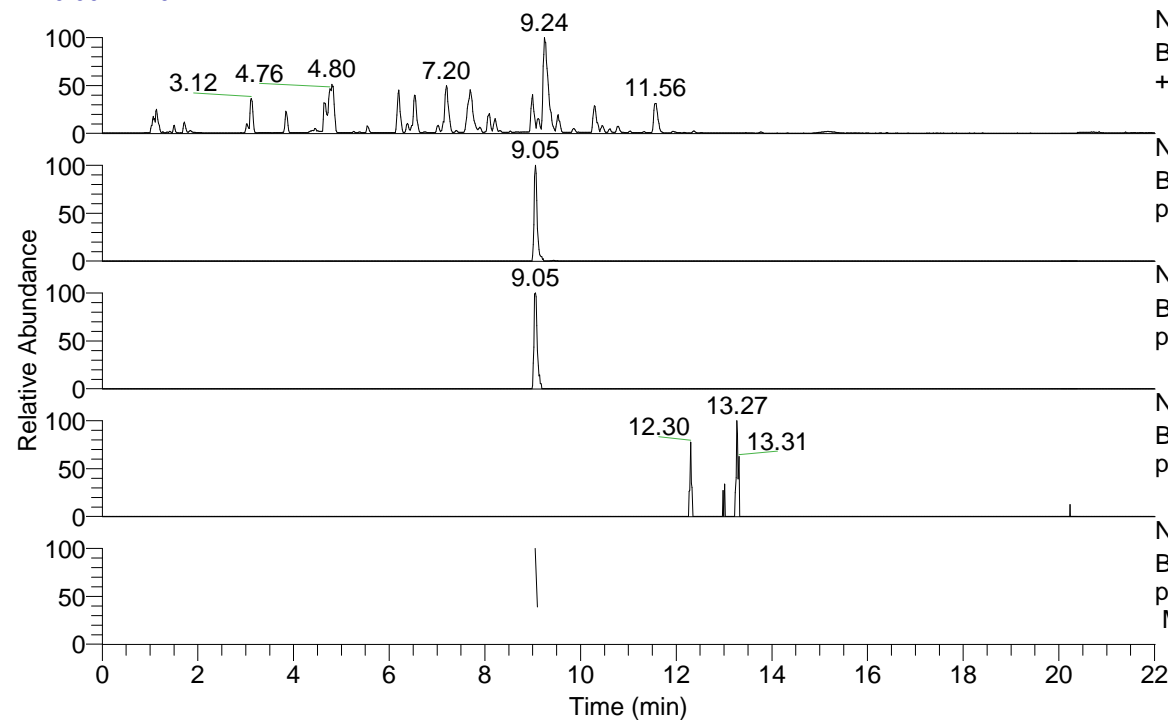


RT: 0.00 - 22.01



NL: 8.52E7
 Base Peak m/z= 100.00000-1500.00000 F: FTMS + p ESI Full ms [100.00-1500.00] MS Hcurta

NL: 6.94E5
 Base Peak m/z= 416.33478-416.34310 F: FTMS + p ESI Full ms [100.00-1500.00] MS Hcurta

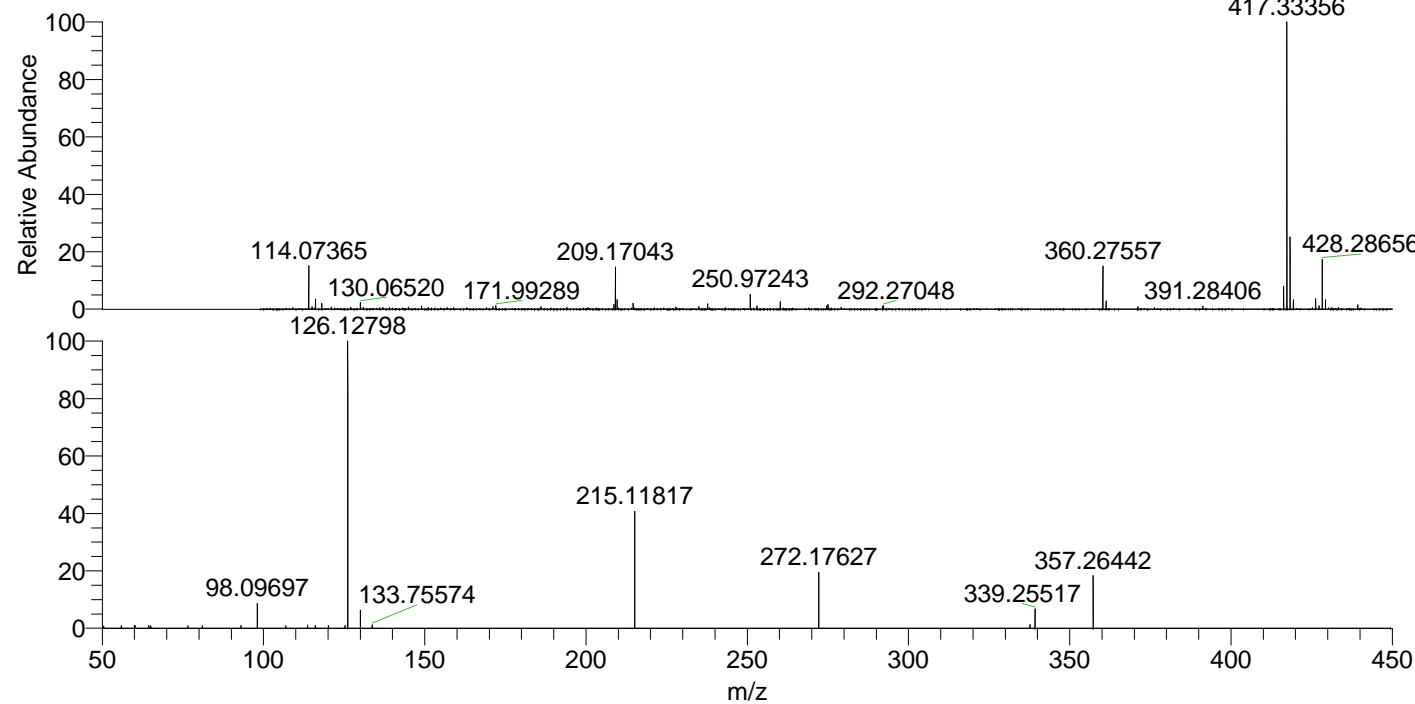
NL: 1.40E5
 Base Peak m/z= 208.67129-208.67547 F: FTMS + p ESI Full ms [100.00-1500.00] MS Hcurta

NL: 5.52E3
 Base Peak m/z= 530.32650-530.33710 F: FTMS + p ESI Full ms [100.00-1500.00] MS Hcurta

NL: 2.77E5
 Base Peak m/z= 50.00000-1500.00000 F: FTMS + p ESI d Full ms2 416.34@hcd35.00 [50.00-445.00] MS Hcurta

Hcurta#3630-3648 RT: 9.05-9.10 AV: 2
 F: FTMS + p ESI d Full ms2 416.34 ...
 m/z= 50.00000-1000.00000

m/z	Intensity	Relative
50.41786	1352.5	0.73
55.94170	1521.8	0.82
60.00775	1771.5	0.95
60.20350	1746.6	0.94
64.48344	1807.4	0.97
64.99688	1570.5	0.84
76.52000	1564.1	0.84
81.00147	1619.9	0.87
93.06939	1747.4	0.94
98.09697	16700.3	8.97
106.96540	1690.6	0.91
113.64332	1988.1	1.07
116.04398	1709.3	0.92
120.15981	1883.6	1.01
125.27432	1818.2	0.98
126.12798	186094.3	100.00
130.06541	11903.6	6.40
133.75574	2137.8	1.15
215.09961	2287.9	1.23
215.11817	77567.0	41.68
272.17627	37394.2	20.09
337.68800	2283.2	1.23
339.25517	12716.0	6.83
357.26442	35482.6	19.07



NL: 8.22E6
 Hcurta#3631 RT: 9.05
 AV: 1 T: FTMS + p ESI
 Full lock ms
 [100.00-1500.00]

NL: 1.86E5
 Hcurta#3563-3721 RT:
 9.05-9.10 AV: 2 F: FTMS
 + p ESI d Full ms2
 416.34@hcd35.00
 [50.00-445.00]