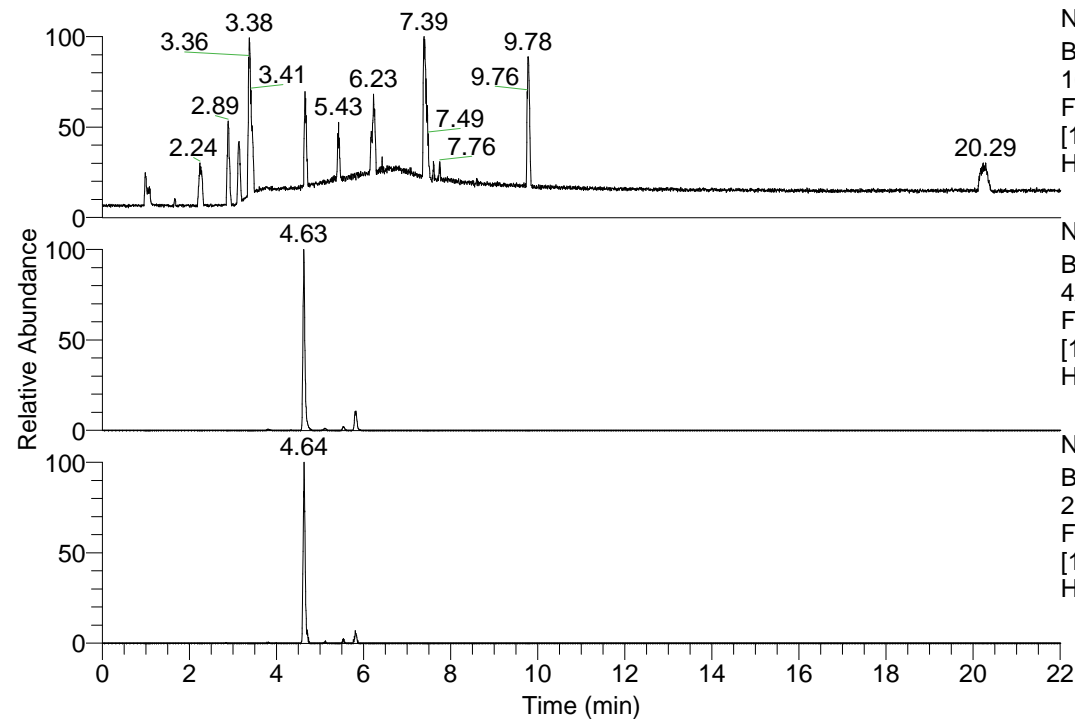


RT: 0.00 - 22.01



NL: 1.13E8  
 Base Peak m/z=  
 100.00000-1500.00000 F:  
 FTMS + p ESI Full ms  
 [100.00-1500.00] MS  
 Hcurta\_HDX

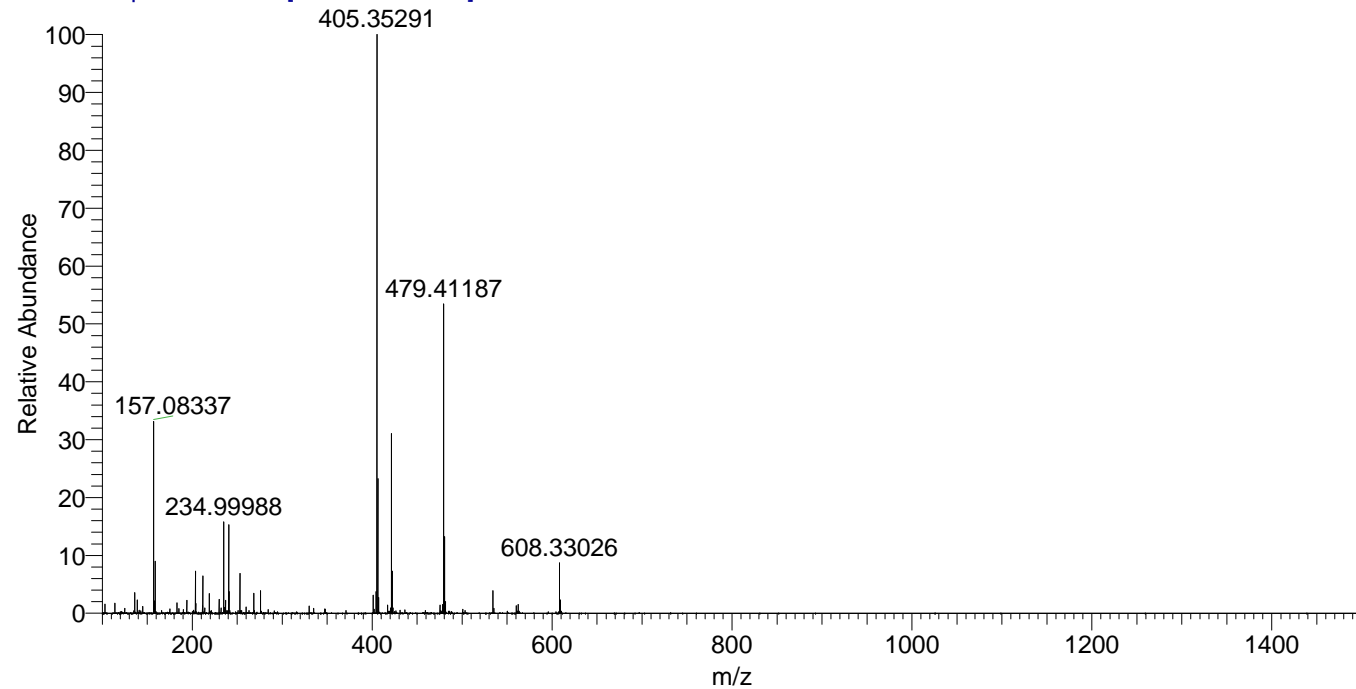
NL: 2.31E7  
 Base Peak m/z=  
 421.34676-421.35098 F:  
 FTMS + p ESI Full ms  
 [100.00-1500.00] MS  
 Hcurta\_HDX

NL: 8.03E5  
 Base Peak m/z=  
 211.68043-211.68255 F:  
 FTMS + p ESI Full ms  
 [100.00-1500.00] MS  
 Hcurta\_HDX

Hcurta\_HDX#727 RT: 4.63  
 T: FTMS + p ESI Full ms [100.00-1500.00]  
 m/z= 421.00000-422.00000

m/z	Intensity	Relative	Delta (ppm)	Composition
421.34763	23075146.0	100.00	-1.65	C <sub>20</sub> H <sub>29</sub> <sup>2</sup> H <sub>9</sub> O <sub>4</sub> N <sub>5</sub>
			2.02	C <sub>20</sub> H <sub>27</sub> <sup>2</sup> H <sub>10</sub> O <sub>4</sub> N <sub>5</sub>

Hcurta\_HDX #729 RT: 4.64 AV: 1 NL: 5.61E7  
 T: FTMS + p ESI Full ms [100.00-1500.00]



Hcurta\_HDX #727 RT: 4.63 AV: 1 NL: 2.22E7  
 T: FTMS + p ESI Full ms [100.00-1500.00]

