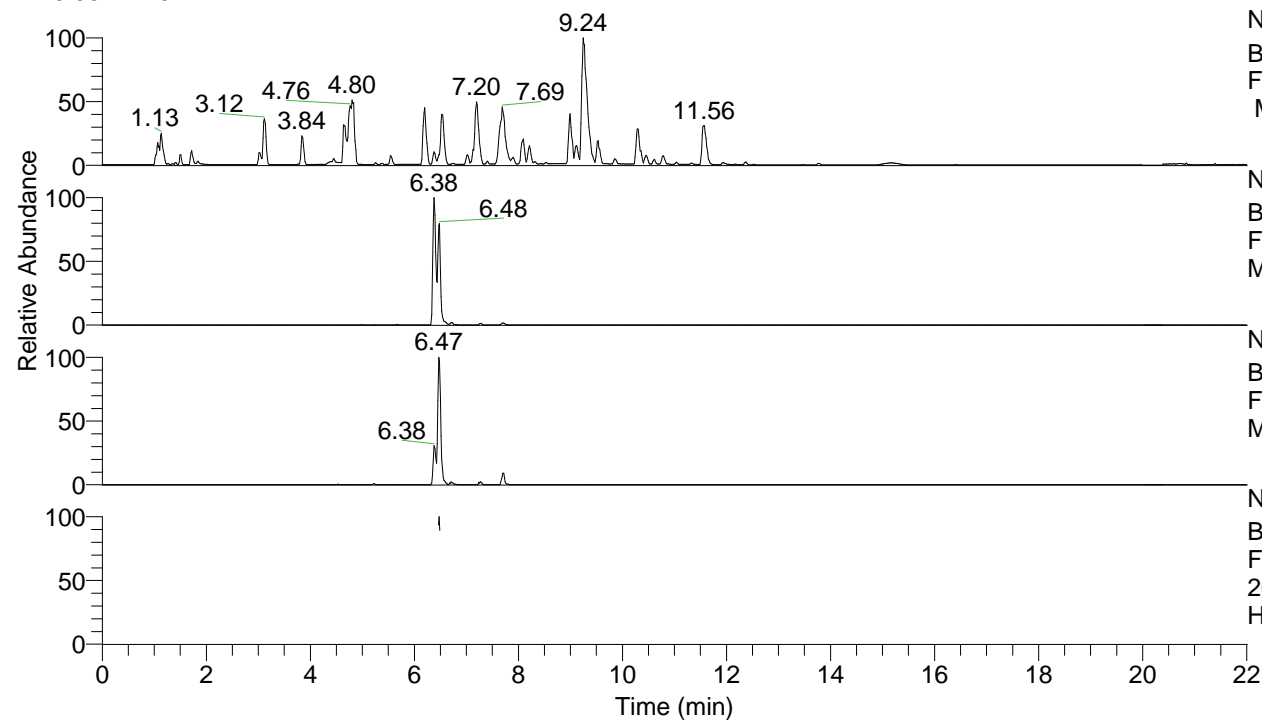


RT: 0.00 - 22.01



NL: 8.52E7  
 Base Peak m/z= 100.00000-1500.00000  
 F: FTMS + p ESI Full ms [100.00-1500.00]  
 MS Hcurta

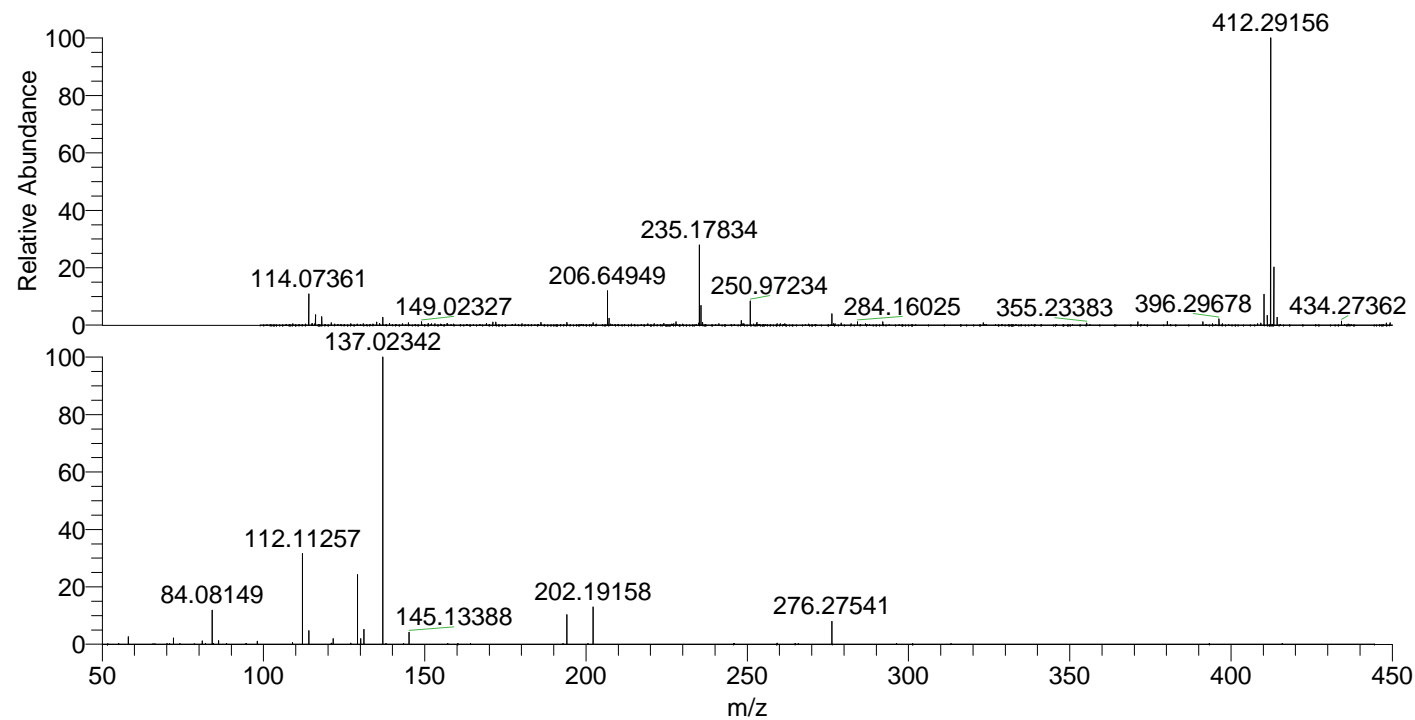
NL: 9.06E6  
 Base Peak m/z= 412.28826-412.29650 F:  
 FTMS + p ESI Full ms [100.00-1500.00]  
 MS Hcurta

NL: 8.95E5  
 Base Peak m/z= 206.64803-206.65217 F:  
 FTMS + p ESI Full ms [100.00-1500.00]  
 MS Hcurta

NL: 3.93E5  
 Base Peak m/z= 50.00000-1500.00000 F:  
 FTMS + p ESI d Full ms2  
 206.65@hcd35.00 [50.00-440.00] MS  
 Hcurta

Hcurta#2591-2601 RT: 6.46-6.49 AV: 3  
 F: FTMS + p ESI d Full ms2 206.65 ...  
 m/z= 50.00000-1000.00000

m/z	Intensity	Relative
58.06598	9488.9	2.67
72.08165	7854.1	2.21
81.03412	4009.7	1.13
84.08149	42361.1	11.92
86.06073	4693.3	1.32
98.09700	3929.9	1.11
109.02879	2091.4	0.59
112.11257	112285.8	31.61
114.09188	17253.9	4.86
121.61529	7012.9	1.97
129.13886	89020.2	25.06
130.12846	6929.6	1.95
131.11810	18505.7	5.21
137.02342	355251.2	100.00
145.13388	15007.2	4.22
194.08138	36481.4	10.27
202.19158	45932.2	12.93
276.27541	28585.0	8.05



NL: 7.19E6  
 Hcurta#2599 RT: 6.48  
 AV: 1 T: FTMS + p ESI  
 Full lock ms  
 [100.00-1500.00]

NL: 3.54E5  
 Hcurta#2545-2665 RT:  
 6.46-6.49 AV: 3 F: FTMS  
 + p ESI d Full ms2  
 206.65@hcd35.00  
 [50.00-440.00]