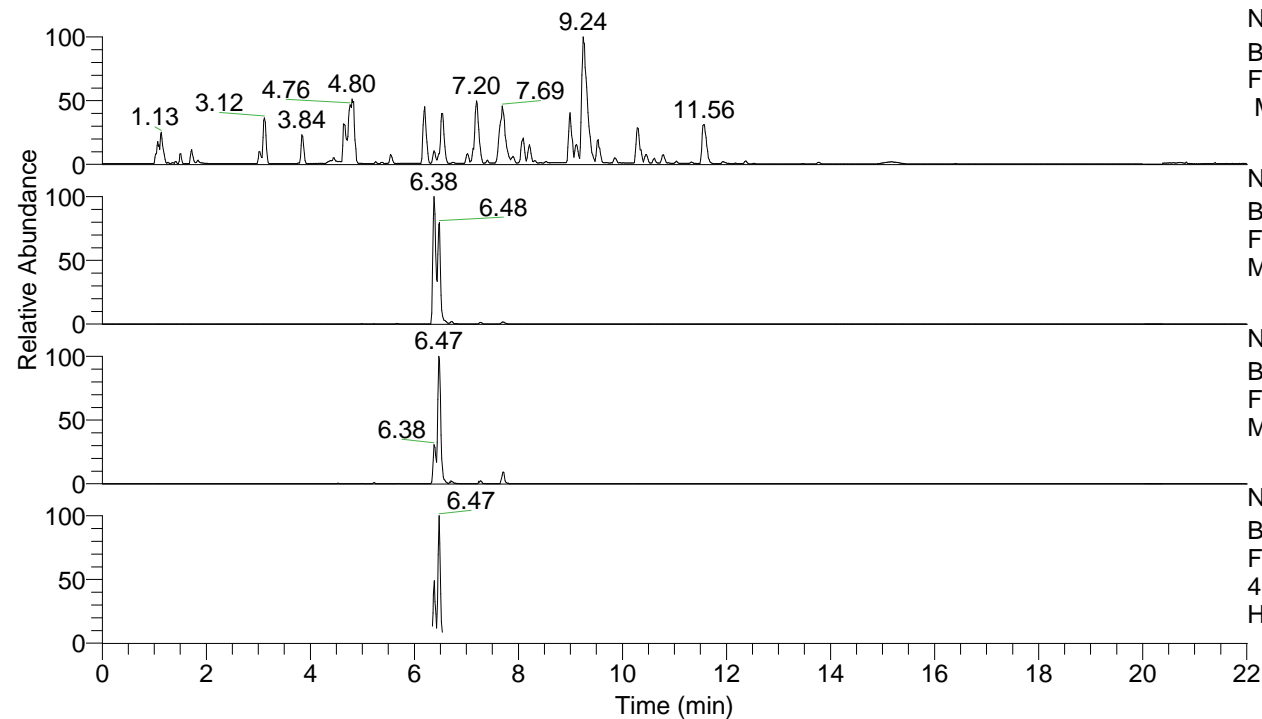


RT: 0.00 - 22.01



NL: 8.52E7  
 Base Peak m/z= 100.00000-1500.00000  
 F: FTMS + p ESI Full ms [100.00-1500.00]  
 MS Hcurta

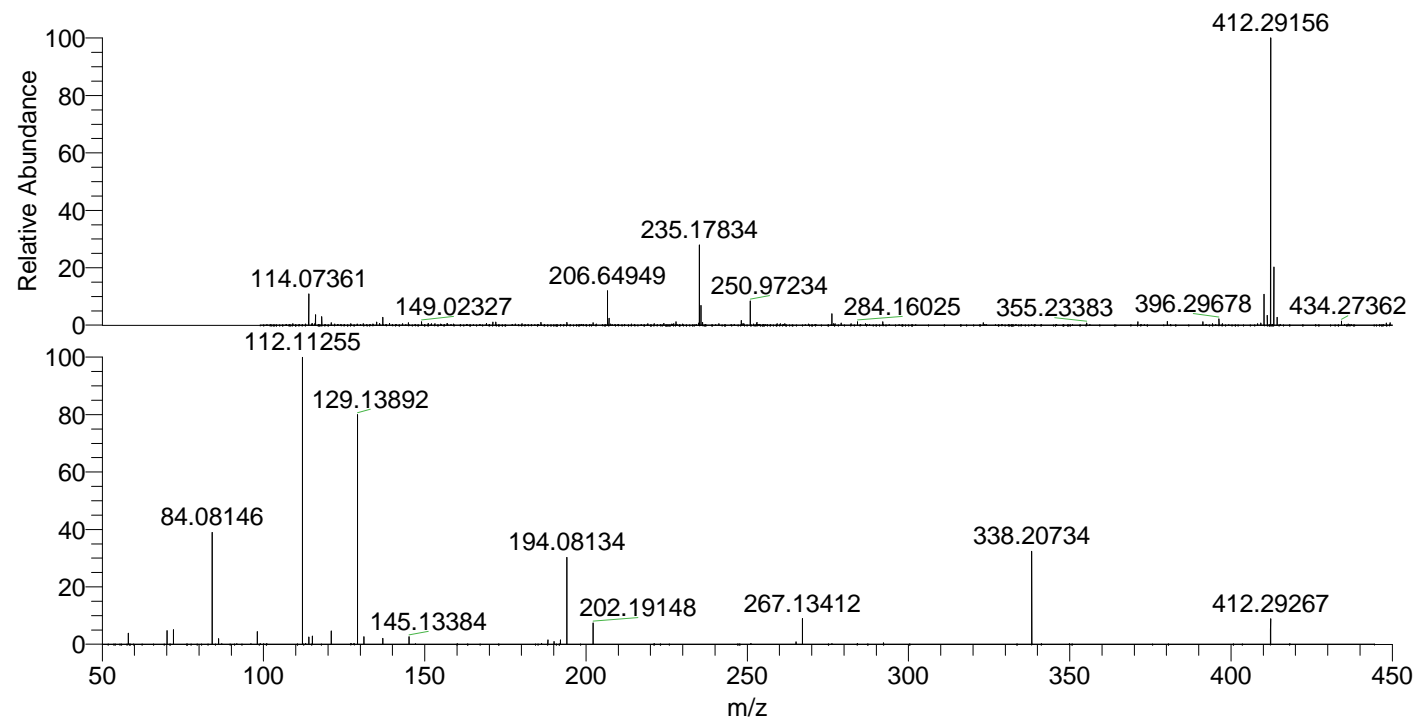
NL: 9.06E6  
 Base Peak m/z= 412.28826-412.29650 F:  
 FTMS + p ESI Full ms [100.00-1500.00]  
 MS Hcurta

NL: 8.95E5  
 Base Peak m/z= 206.64803-206.65217 F:  
 FTMS + p ESI Full ms [100.00-1500.00]  
 MS Hcurta

NL: 1.42E6  
 Base Peak m/z= 50.00000-1500.00000 F:  
 FTMS + p ESI d Full ms2  
 412.29@hcd35.00 [50.00-440.00] MS  
 Hcurta

Hcurta#2582-2606 RT: 6.44-6.50 AV: 5  
 F: FTMS + p ESI d Full ms2 412.29 ...  
 m/z= 50.00000-1000.00000

m/z	Intensity	Relative
58.06600	33444.5	3.91
70.06589	40852.2	4.78
72.08164	43900.4	5.14
84.08146	338379.9	39.60
86.06083	17139.1	2.01
98.09701	38332.7	4.49
112.11255	854436.5	100.00
114.09178	22561.6	2.64
115.12347	24338.3	2.85
121.02881	41085.3	4.81
129.13892	696317.3	81.49
131.11802	22163.5	2.59
137.02353	17981.2	2.10
145.13384	21997.2	2.57
188.17629	12852.5	1.50
190.08676	8059.4	0.94
192.10237	12916.4	1.51
194.08134	258885.3	30.30
202.19148	64144.2	7.51
265.15473	7193.6	0.84
267.13412	79241.4	9.27
338.20734	283379.8	33.17
412.29267	76359.2	8.94



NL: 7.19E6  
 Hcurta#2599 RT: 6.48  
 AV: 1 T: FTMS + p ESI  
 Full lock ms  
 [100.00-1500.00]

NL: 8.54E5  
 Hcurta#2580-2611 RT:  
 6.44-6.50 AV: 5 F: FTMS  
 + p ESI d Full ms2  
 412.29@hcd35.00  
 [50.00-440.00]