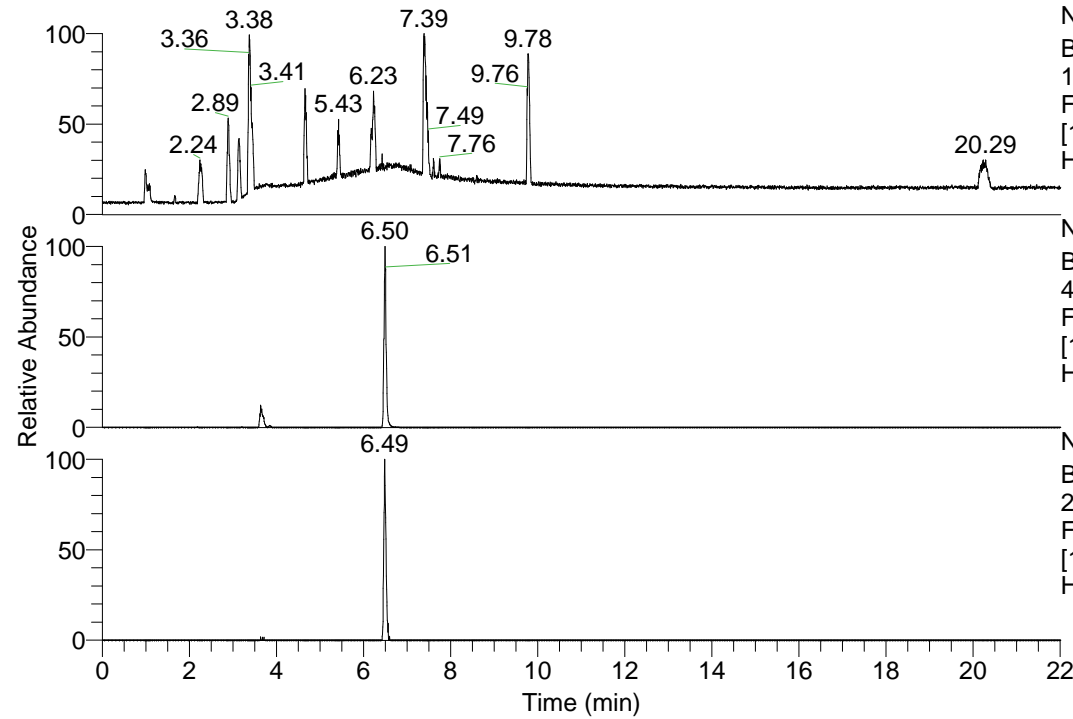


RT: 0.00 - 22.01



NL: 1.13E8
 Base Peak m/z=
 100.00000-1500.00000 F:
 FTMS + p ESI Full ms
 [100.00-1500.00] MS
 Hcurta_HDX

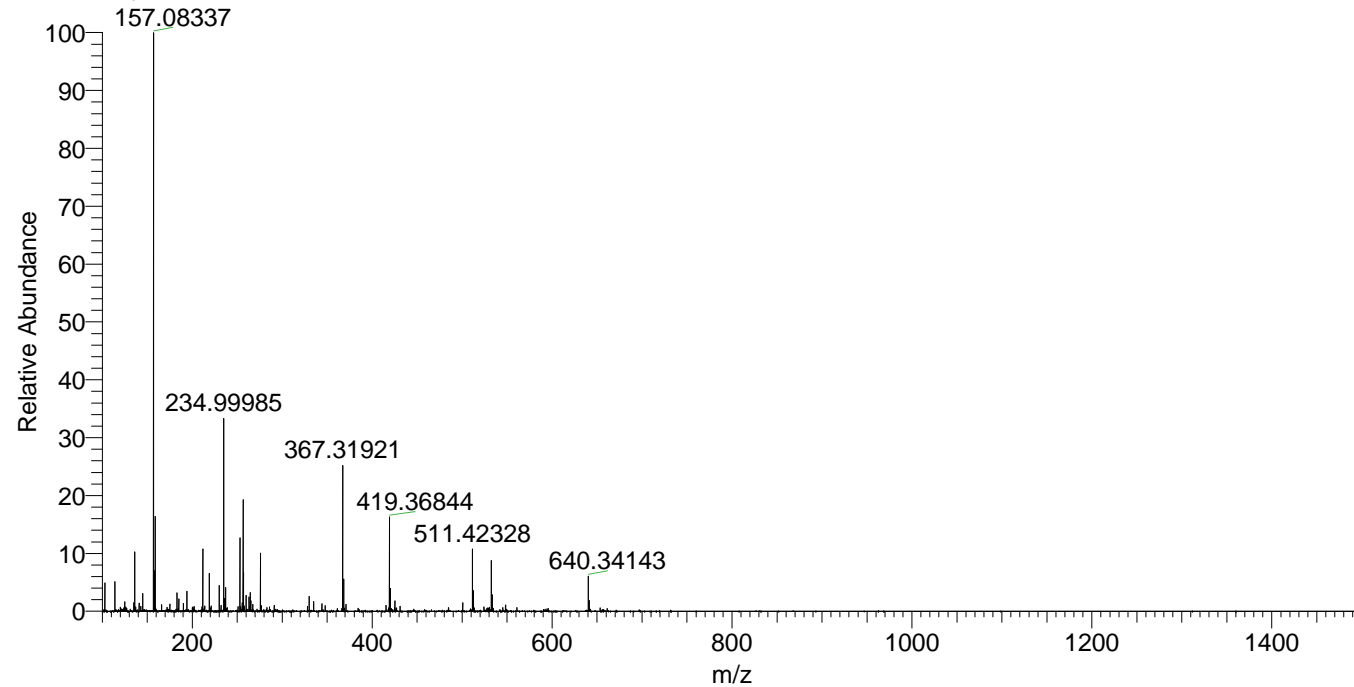
NL: 5.36E6
 Base Peak m/z=
 419.36751-419.37171 F:
 FTMS + p ESI Full ms
 [100.00-1500.00] MS
 Hcurta_HDX

NL: 2.98E5
 Base Peak m/z=
 210.69080-210.69290 F:
 FTMS + p ESI Full ms
 [100.00-1500.00] MS
 Hcurta_HDX

Hcurta_HDX#1041 RT: 6.50
 T: FTMS + p ESI Full ms [100.00-1500.00]
 m/z= 419.00000-420.00000

m/z	Intensity	Relative	Delta (ppm)	Composition
419.36844	4637465.0	100.00	-1.48	C ₂₁ H ₃₁ ² H ₉ O ₃ N ₅
			2.22	C ₂₁ H ₂₉ ² H ₁₀ O ₃ N ₅

Hcurta_HDX #1041 RT: 6.50 AV: 1 NL: 2.77E7
 T: FTMS + p ESI Full ms [100.00-1500.00]



Hcurta_HDX #1041 RT: 6.50 AV: 1 NL: 4.51E6
 T: FTMS + p ESI Full ms [100.00-1500.00]

