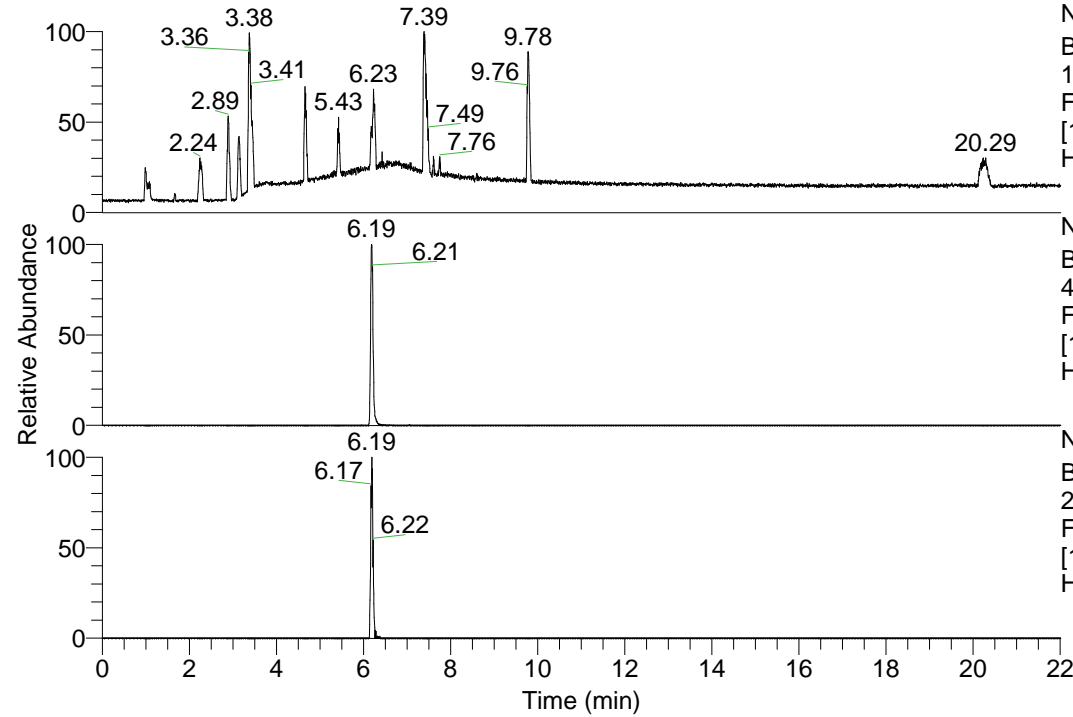


RT: 0.00 - 22.01



NL: 1.13E8
Base Peak m/z=
100.00000-1500.00000 F:
FTMS + p ESI Full ms
[100.00-1500.00] MS
Hcurta_HDX

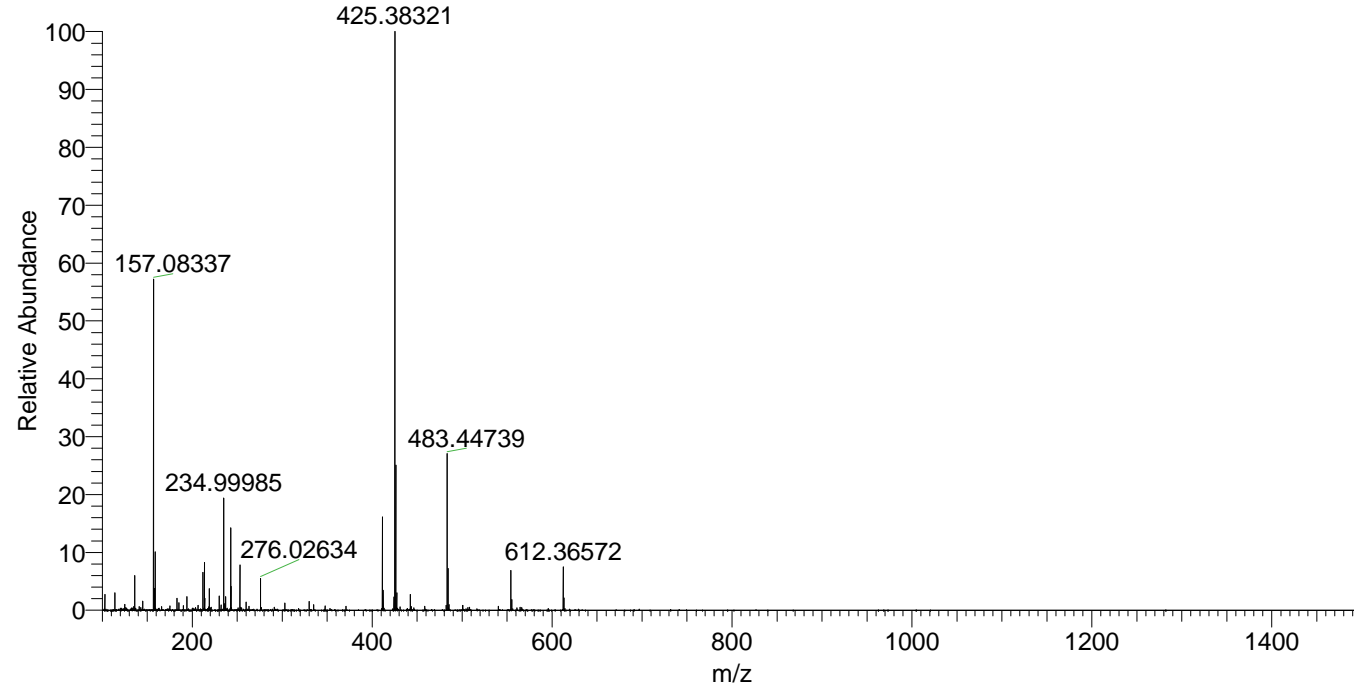
NL: 7.74E6
Base Peak m/z=
411.36669-411.37081 F:
FTMS + p ESI Full ms
[100.00-1500.00] MS
Hcurta_HDX

NL: 4.22E5
Base Peak m/z=
206.69040-206.69246 F:
FTMS + p ESI Full ms
[100.00-1500.00] MS
Hcurta_HDX

Hcurta_HDX#987 RT: 6.19
T: FTMS + p ESI Full ms [100.00-1500.00]
m/z= 411.00000-412.00000

m/z	Intensity	Relative	Delta (ppm)	Composition
411.36777	7693806.5	100.00	-1.05	C ₂₂ H ₃₁ ² H ₈ ON ₆
			2.71	C ₂₂ H ₂₉ ² H ₉ ON ₆
			-4.82	C ₂₂ H ₃₃ ² H ₇ ON ₆

Hcurta_HDX #987 RT: 6.19 AV: 1 NL: 4.77E7
T: FTMS + p ESI Full ms [100.00-1500.00]



Hcurta_HDX #987 RT: 6.19 AV: 1 NL: 7.69E6
T: FTMS + p ESI Full ms [100.00-1500.00]

