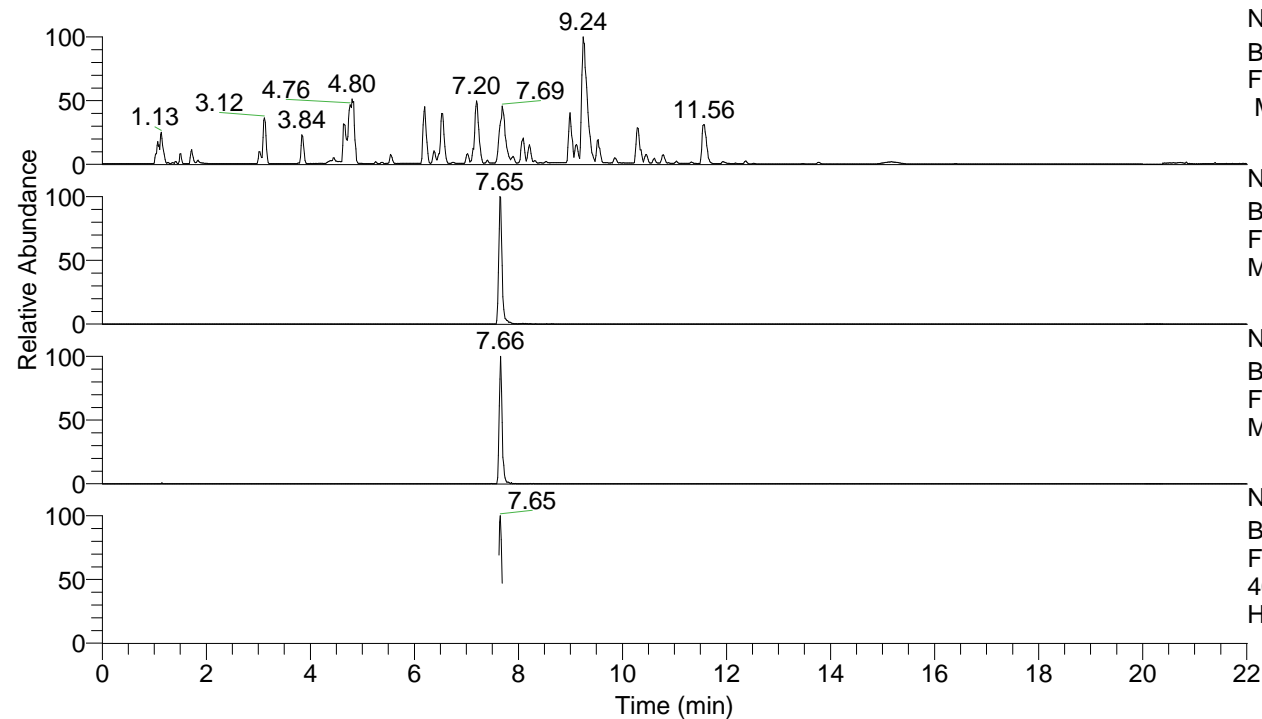


RT: 0.00 - 22.01



NL: 8.52E7  
 Base Peak m/z= 100.00000-1500.00000  
 F: FTMS + p ESI Full ms [100.00-1500.00]  
 MS Hcurta

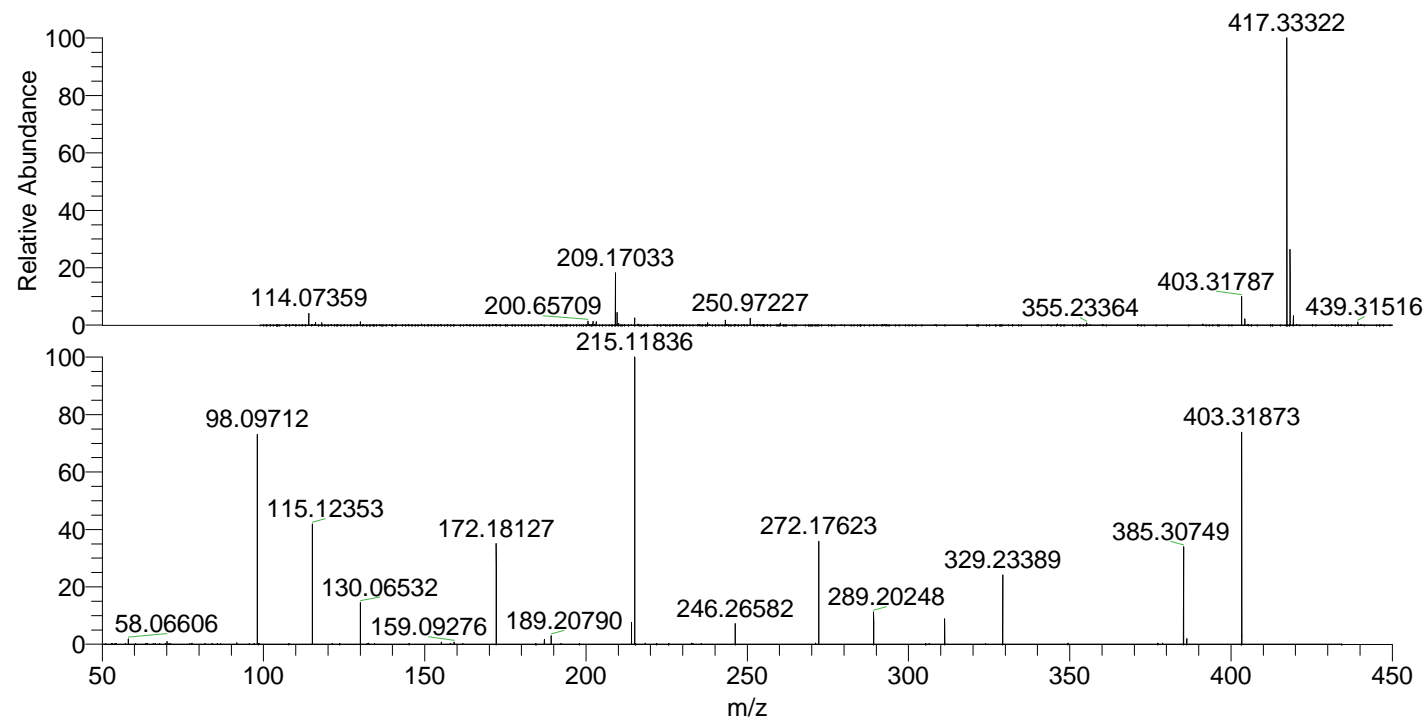
NL: 2.46E6  
 Base Peak m/z= 403.31450-403.32256 F:  
 FTMS + p ESI Full ms [100.00-1500.00]  
 MS Hcurta

NL: 4.13E5  
 Base Peak m/z= 202.16116-202.16520 F:  
 FTMS + p ESI Full ms [100.00-1500.00]  
 MS Hcurta

NL: 3.36E5  
 Base Peak m/z= 50.00000-1500.00000 F:  
 FTMS + p ESI d Full ms2  
 403.32@hcd35.00 [50.00-430.00] MS  
 Hcurta

Hcurta#3060-3084 RT: 7.63-7.69 AV: 5  
 F: FTMS + p ESI d Full ms2 403.32 ...  
 m/z= 50.00000-1000.00000

m/z	Intensity	Relative
58.06606	4576.9	1.85
70.06613	2417.8	0.98
98.09712	182483.4	73.76
115.12353	103290.4	41.75
130.06532	36823.6	14.89
155.15503	1776.8	0.72
159.09276	1814.4	0.73
172.18127	86992.7	35.16
172.19403	2291.2	0.93
187.08727	4338.2	1.75
189.20790	7347.9	2.97
214.13476	18791.4	7.60
215.11836	247386.9	100.00
246.26582	17792.0	7.19
272.17623	89544.5	36.20
289.20248	28611.8	11.57
311.22398	21880.7	8.84
329.23389	61752.2	24.96
385.30749	84957.8	34.34
386.29086	4741.2	1.92
403.31873	182777.9	73.88
403.37225	2659.7	1.08



NL: 2.44E7  
 Hcurta#3067 RT: 7.65  
 AV: 1 T: FTMS + p ESI  
 Full lock ms  
 [100.00-1500.00]

NL: 2.46E5  
 Hcurta#3002-3143 RT:  
 7.63-7.69 AV: 5 F: FTMS  
 + p ESI d Full ms2  
 403.32@hcd35.00  
 [50.00-430.00]