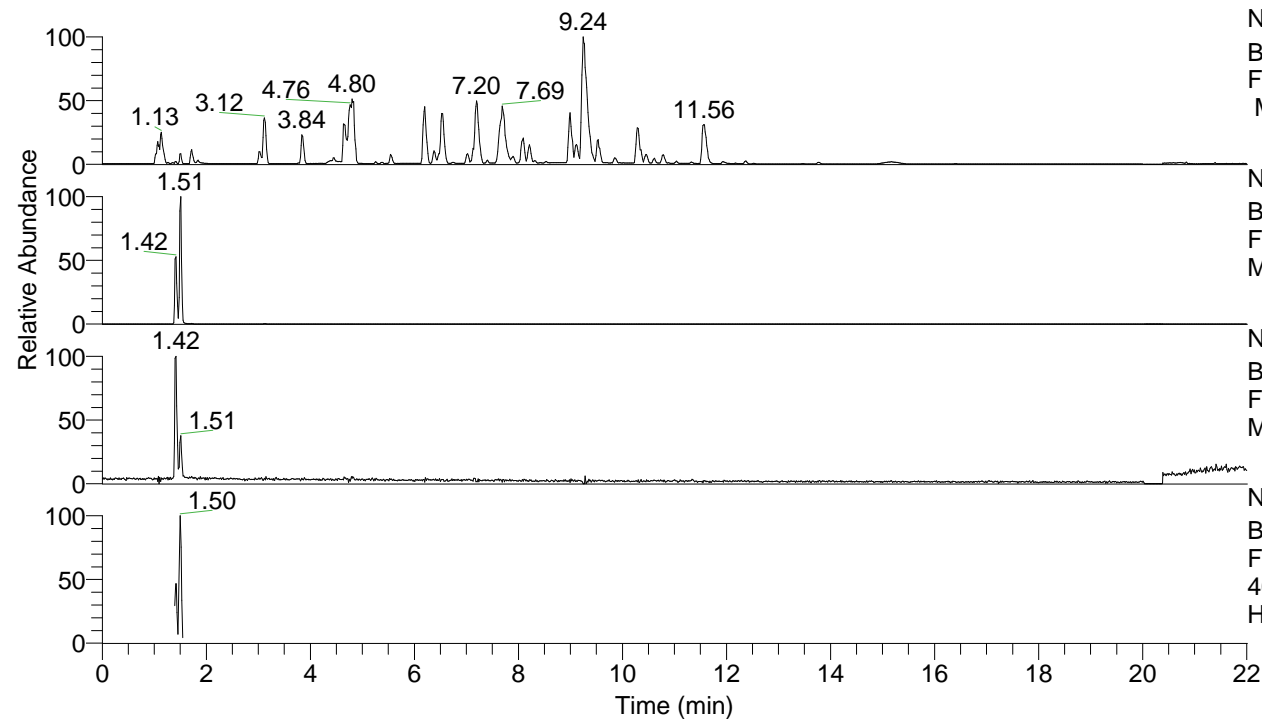


RT: 0.00 - 22.01



NL: 8.52E7  
 Base Peak m/z= 100.00000-1500.00000  
 F: FTMS + p ESI Full ms [100.00-1500.00]  
 MS Hcurta

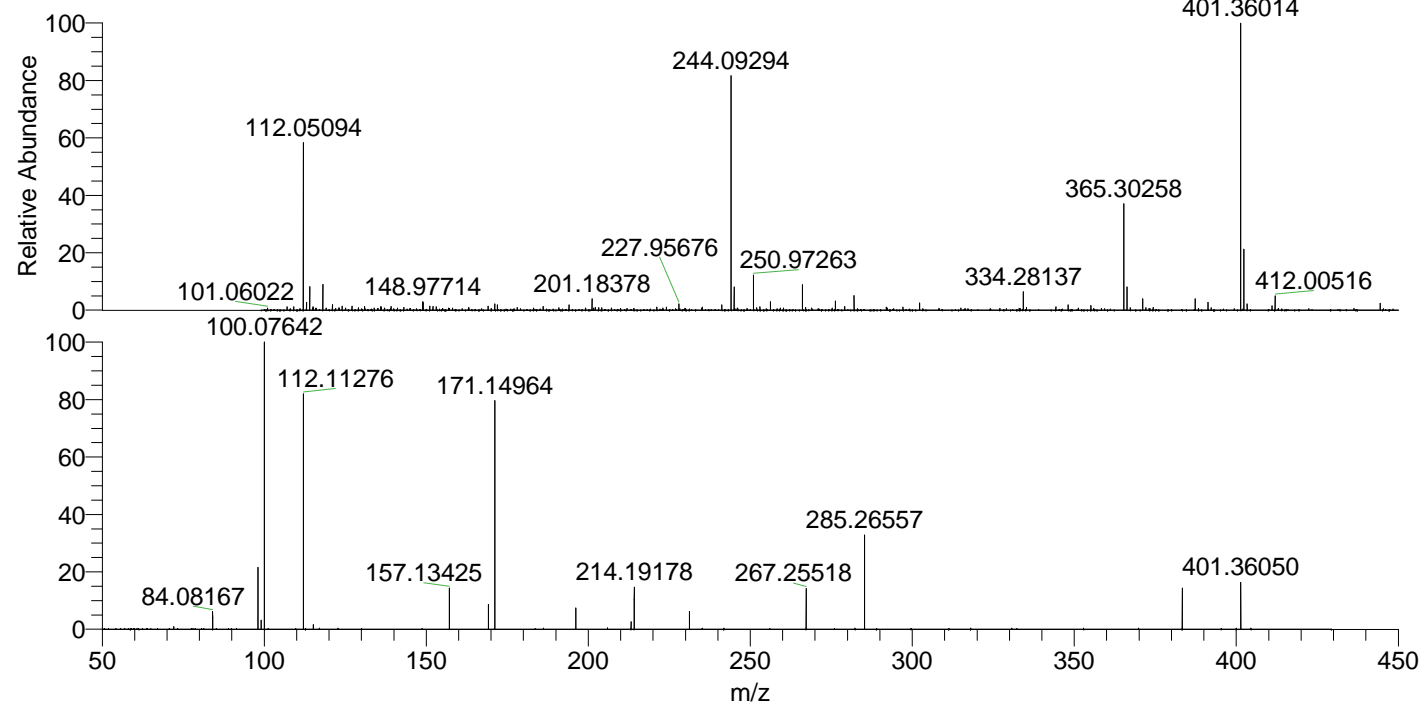
NL: 3.69E6  
 Base Peak m/z= 401.35639-401.36441 F:  
 FTMS + p ESI Full ms [100.00-1500.00]  
 MS Hcurta

NL: 3.92E5  
 Base Peak m/z= 201.18210-201.18612 F:  
 FTMS + p ESI Full ms [100.00-1500.00]  
 MS Hcurta

NL: 5.69E5  
 Base Peak m/z= 50.00000-1500.00000 F:  
 FTMS + p ESI d Full ms2  
 401.36@hcd35.00 [50.00-425.00] MS  
 Hcurta

Hcurta#584-624 RT: 1.45-1.55 AV: 5  
 F: FTMS + p ESI d Full ms2 401.36 ...  
 m/z= 50.00000-1000.00000

m/z	Intensity	Relative
72.04546	2183.4	0.92
84.08167	15189.5	6.42
98.09724	50534.2	21.37
99.09254	7637.9	3.23
100.07642	236464.6	100.00
112.11276	191903.8	81.16
115.12371	3902.5	1.65
157.13425	33414.9	14.13
169.17023	20507.3	8.67
171.14964	191113.0	80.82
196.18168	17544.6	7.42
213.20805	6412.3	2.71
214.19178	34955.5	14.78
231.21872	14498.8	6.13
267.25518	33944.7	14.36
285.26557	76737.1	32.45
383.35016	34706.5	14.68
401.36050	38299.0	16.20



NL: 3.69E6  
 Hcurta#607 RT: 1.51  
 AV: 1 T: FTMS + p ESI  
 Full lock ms  
 [100.00-1500.00]

NL: 2.34E5  
 Hcurta#584-624 RT:  
 1.45-1.55 AV: 5 F:  
 FTMS + p ESI d Full ms2  
 401.36@hcd35.00  
 [50.00-425.00]