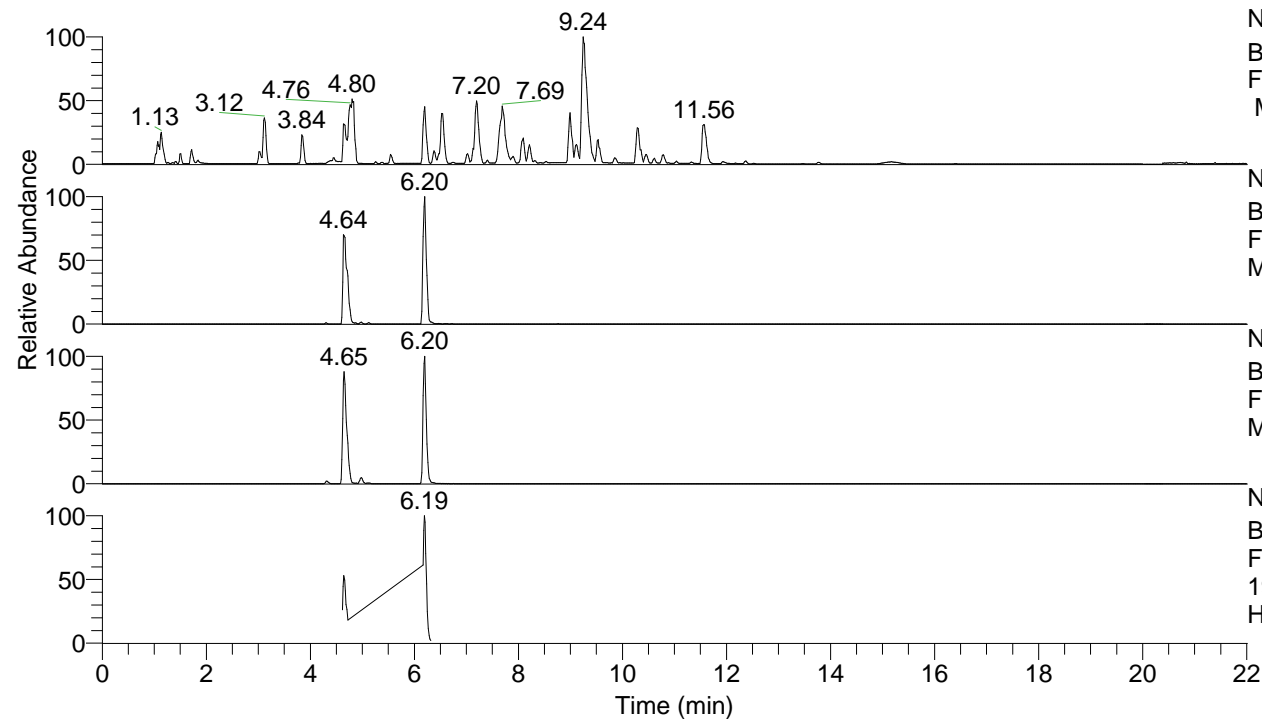


RT: 0.00 - 22.01



NL: 8.52E7
 Base Peak m/z= 100.00000-1500.00000
 F: FTMS + p ESI Full ms [100.00-1500.00]
 MS Hcurta

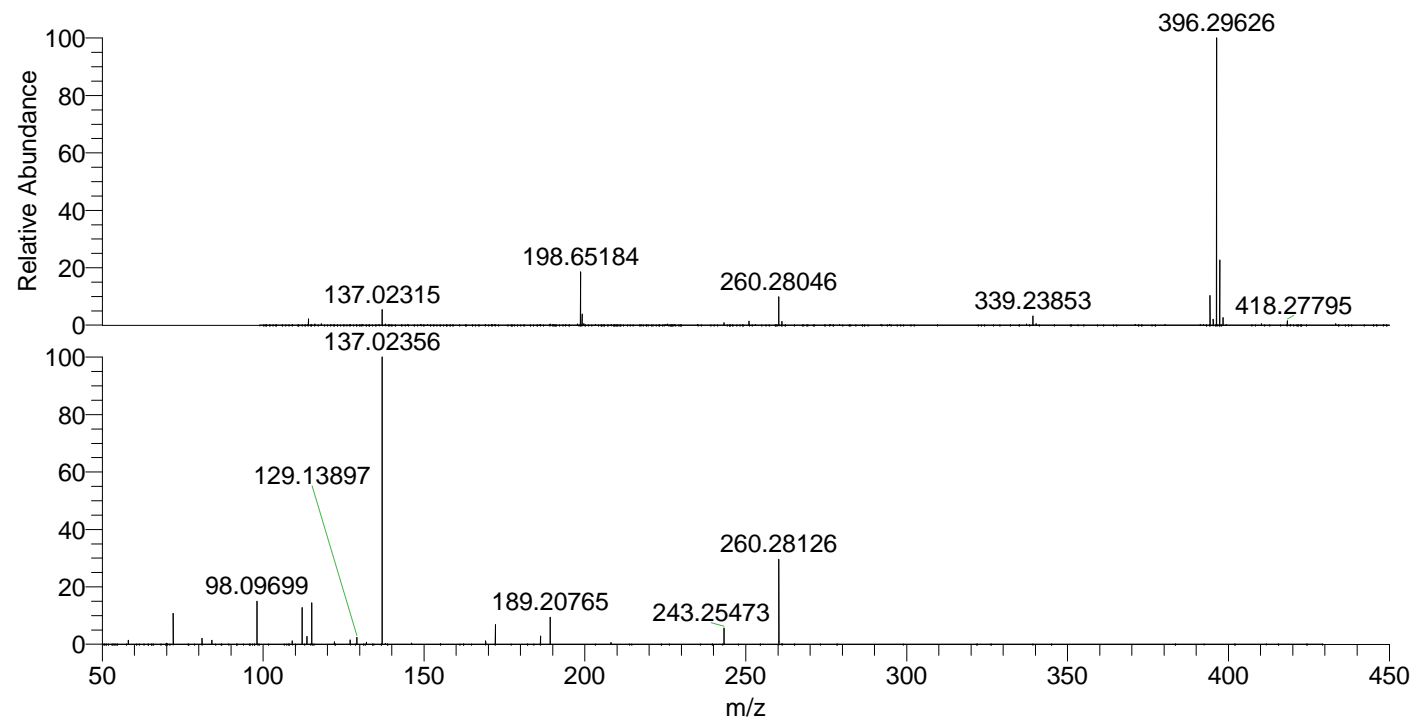
NL: 3.86E7
 Base Peak m/z= 396.29351-396.30143 F:
 FTMS + p ESI Full ms [100.00-1500.00]
 MS Hcurta

NL: 6.91E6
 Base Peak m/z= 198.65066-198.65464 F:
 FTMS + p ESI Full ms [100.00-1500.00]
 MS Hcurta

NL: 3.21E6
 Base Peak m/z= 50.00000-1500.00000 F:
 FTMS + p ESI d Full ms2
 198.65@hcd35.00 [50.00-425.00] MS
 Hcurta

Hcurta#2471-2532 RT: 6.17-6.32 AV: 11
 F: FTMS + p ESI d Full ms2 198.65@h ...
 m/z= 50.00000-1000.00000

m/z	Intensity	Relative
58.06602	18599.5	1.34
72.08154	145771.7	10.50
81.03417	29696.2	2.14
84.08150	19993.0	1.44
98.09699	202658.2	14.59
109.02892	16651.5	1.20
112.11253	173412.7	12.49
113.61804	37644.1	2.71
115.12339	197026.0	14.19
122.13121	11792.8	0.85
127.03925	21039.2	1.52
129.13897	32633.3	2.35
132.14971	10157.6	0.73
137.02356	1388598.3	100.00
169.17016	16447.6	1.18
172.18105	93412.2	6.73
186.19663	39402.6	2.84
189.20765	130369.1	9.39
208.09719	9045.9	0.65
243.25473	78803.6	5.68
260.28126	409868.9	29.52



NL: 3.62E7
 Hcurta#2485 RT: 6.20
 AV: 1 T: FTMS + p ESI
 Full ms [100.00-1500.00]

NL: 1.36E6
 Hcurta#2425-2534 RT:
 6.17-6.32 AV: 11 F:
 FTMS + p ESI d Full ms2
 198.65@hcd35.00
 [50.00-425.00]