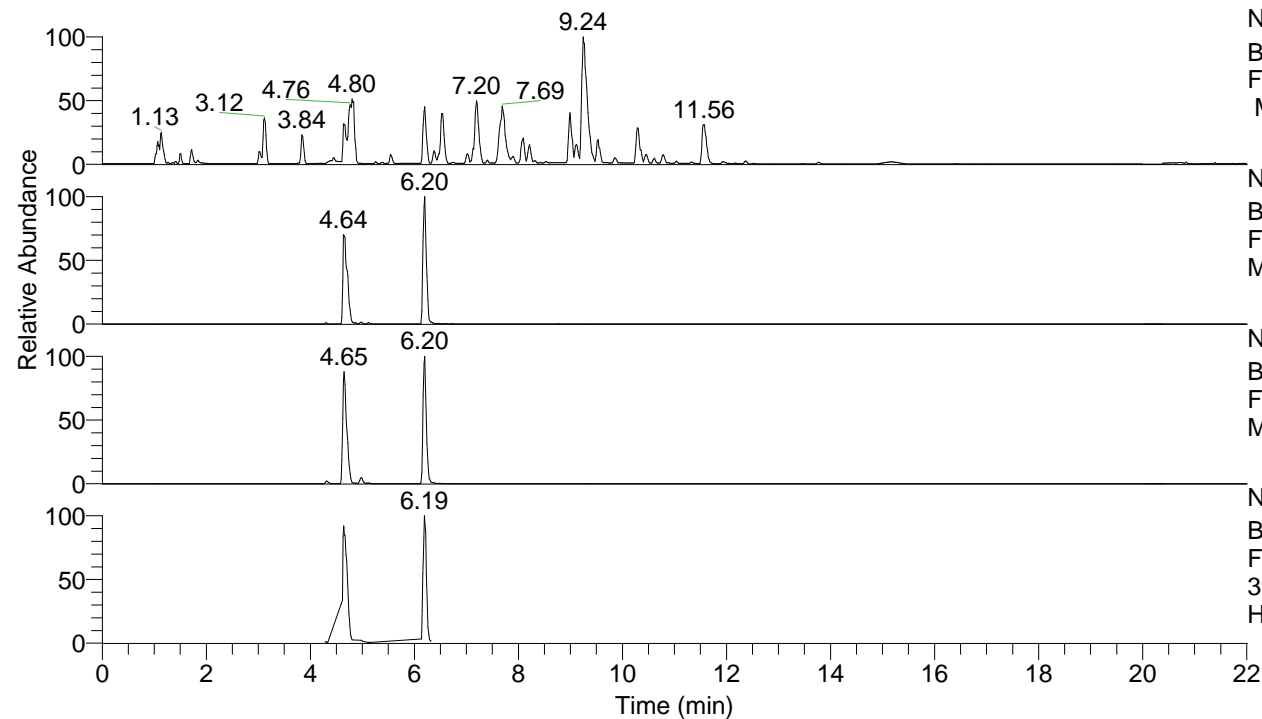


RT: 0.00 - 22.01



NL: 8.52E7
 Base Peak m/z= 100.00000-1500.00000
 F: FTMS + p ESI Full ms [100.00-1500.00]
 MS Hcurta

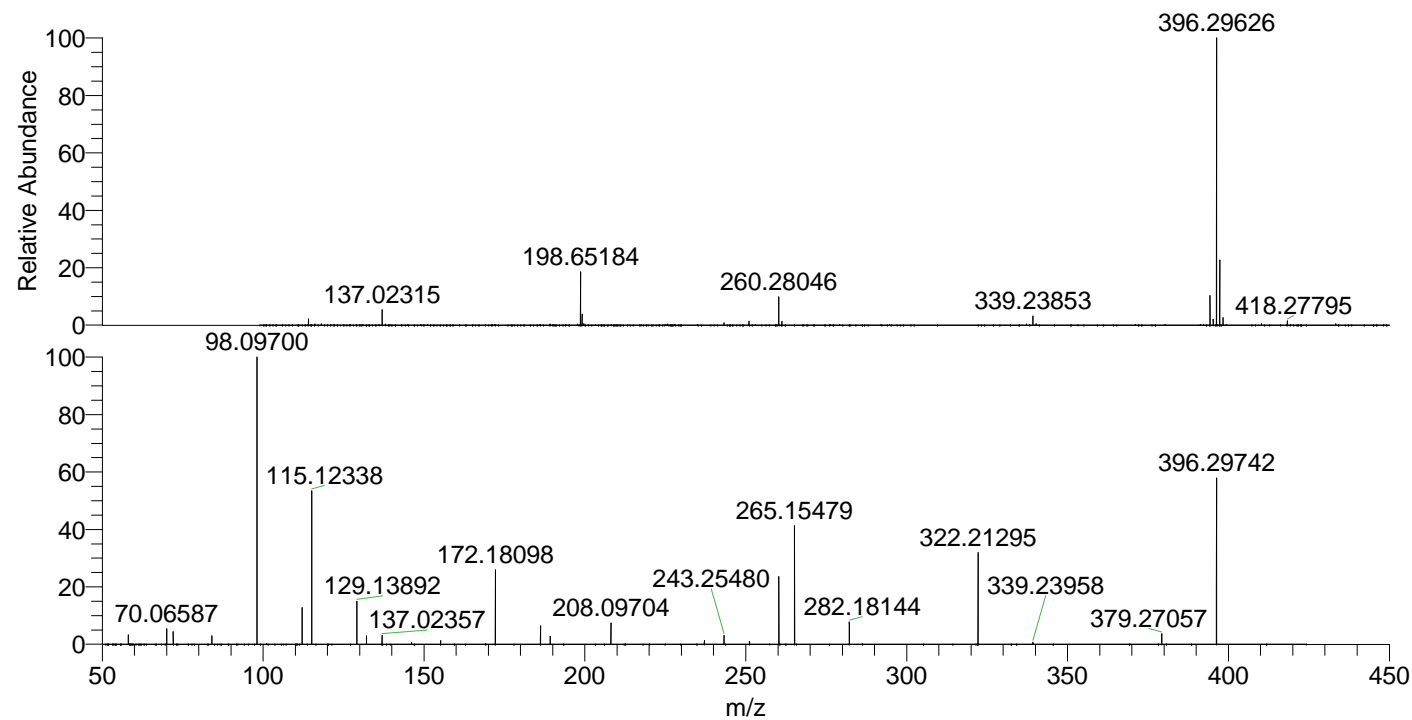
NL: 3.86E7
 Base Peak m/z= 396.29351-396.30143 F:
 FTMS + p ESI Full ms [100.00-1500.00]
 MS Hcurta

NL: 6.91E6
 Base Peak m/z= 198.65066-198.65464 F:
 FTMS + p ESI Full ms [100.00-1500.00]
 MS Hcurta

NL: 5.13E6
 Base Peak m/z= 50.00000-1500.00000 F:
 FTMS + p ESI d Full ms2
 396.30@hcd35.00 [50.00-420.00] MS
 Hcurta

Hcurta#2459-2516 RT: 6.14-6.28 AV: 11
 F: FTMS + p ESI d Full ms2 396.30@h ...
 m/z= 50.00000-1000.00000

m/z	Intensity	Relative
58.06600	85029.5	3.44
70.06587	138088.4	5.59
72.08153	108222.2	4.38
84.08154	73862.2	2.99
98.09700	247037.0	100.00
112.11250	317250.3	12.84
115.12338	1331565.4	53.90
129.13892	370819.5	15.01
132.14991	74335.5	3.01
137.02357	77056.4	3.12
146.16550	14205.7	0.58
155.15459	30960.1	1.25
172.18098	644188.8	26.08
186.19649	162108.5	6.56
189.20779	68642.3	2.78
208.09704	190261.8	7.70
237.12368	31564.2	1.28
243.25480	76037.0	3.08
251.13955	24150.7	0.98
260.28130	586465.6	23.74
265.15479	1037477.3	42.00
282.18144	192369.8	7.79
322.21295	789082.4	31.94
339.23958	19443.3	0.79
379.27057	91174.2	3.69
396.29742	1488936.8	60.27



NL: 3.62E7
 Hcurta#2485 RT: 6.20
 AV: 1 T: FTMS + p ESI
 Full ms [100.00-1500.00]

NL: 2.47E6
 Hcurta#2458-2517 RT:
 6.14-6.28 AV: 11 F:
 FTMS + p ESI d Full ms2
 396.30@hcd35.00
 [50.00-420.00]