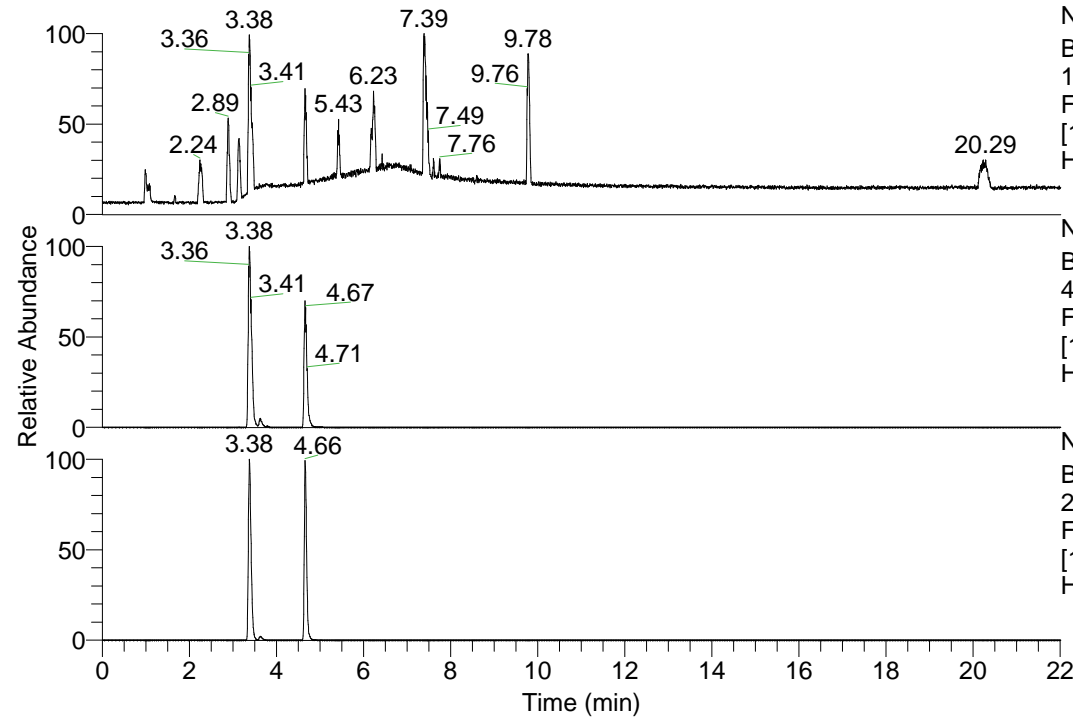


RT: 0.00 - 22.01



NL: 1.13E8  
 Base Peak m/z=  
 100.00000-1500.00000 F:  
 FTMS + p ESI Full ms  
 [100.00-1500.00] MS  
 Hcurta\_HDX

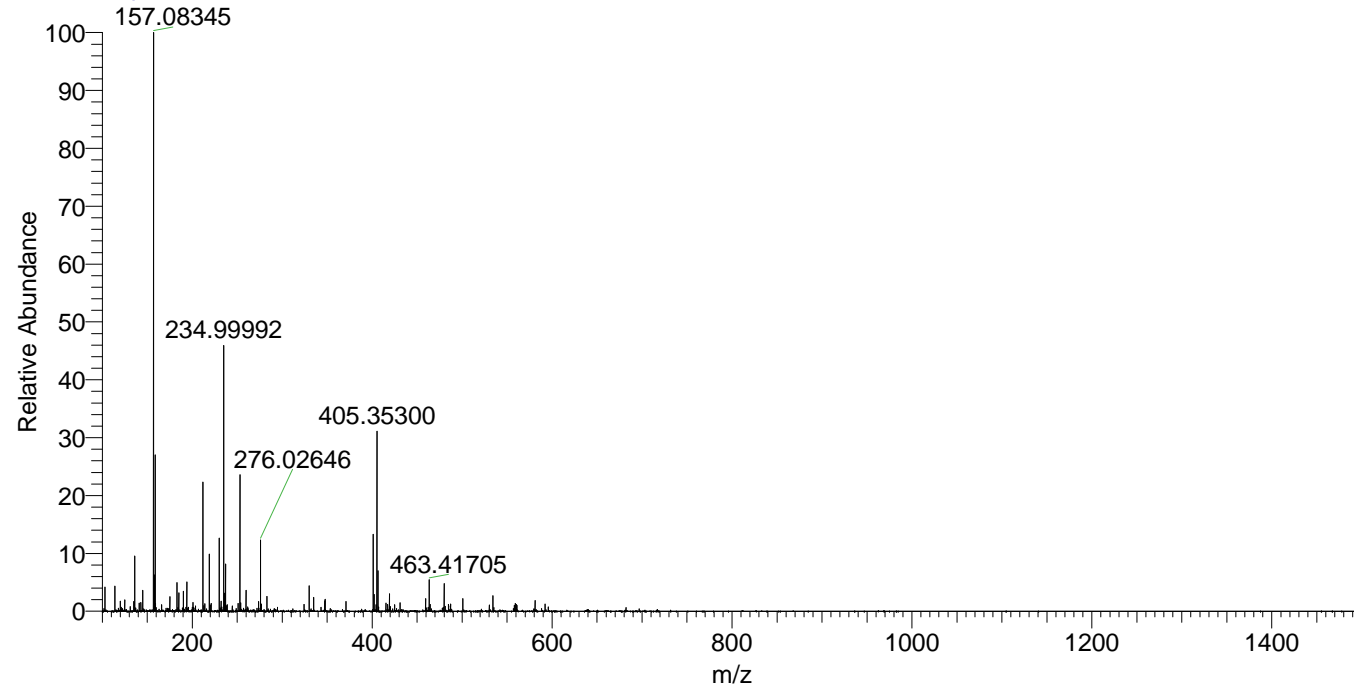
NL: 1.12E8  
 Base Peak m/z=  
 405.35078-405.35484 F:  
 FTMS + p ESI Full ms  
 [100.00-1500.00] MS  
 Hcurta\_HDX

NL: 7.33E6  
 Base Peak m/z=  
 203.68301-203.68505 F:  
 FTMS + p ESI Full ms  
 [100.00-1500.00] MS  
 Hcurta\_HDX

Hcurta\_HDX#566 RT: 3.63  
 T: FTMS + p ESI Full ms [100.00-1500.00]  
 m/z= 405.00000-406.00000

m/z	Intensity	Relative	Delta (ppm)	Composition
405.35300	5624768.5	100.00	-1.01	C <sub>20</sub> H <sub>29</sub> <sup>2</sup> H <sub>9</sub> O <sub>3</sub> N <sub>5</sub>
			2.81	C <sub>20</sub> H <sub>27</sub> <sup>2</sup> H <sub>10</sub> O <sub>3</sub> N <sub>5</sub>
			-4.83	C <sub>20</sub> H <sub>31</sub> <sup>2</sup> H <sub>8</sub> O <sub>3</sub> N <sub>5</sub>

Hcurta\_HDX #566 RT: 3.63 AV: 1 NL: 1.74E7  
 T: FTMS + p ESI Full ms [100.00-1500.00]



Hcurta\_HDX #566 RT: 3.63 AV: 1 NL: 5.41E6  
 T: FTMS + p ESI Full ms [100.00-1500.00]

