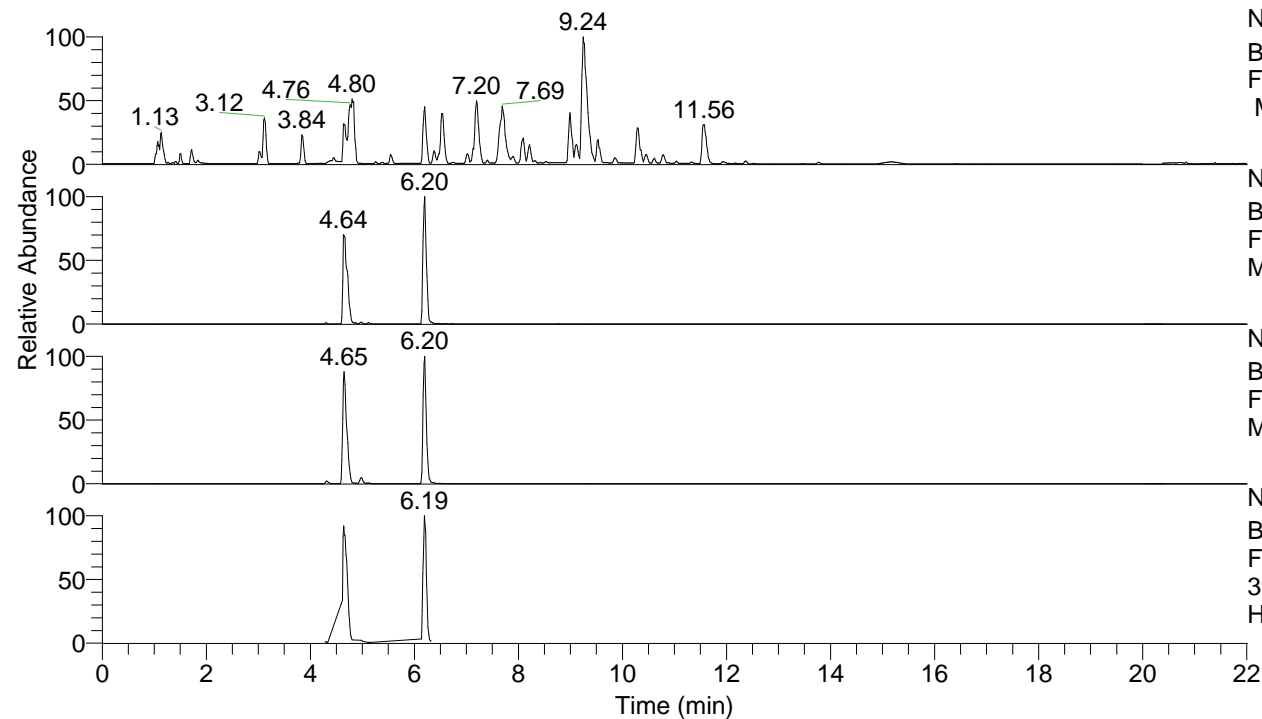


RT: 0.00 - 22.01



NL: 8.52E7  
 Base Peak m/z= 100.00000-1500.00000  
 F: FTMS + p ESI Full ms [100.00-1500.00]  
 MS Hcurta

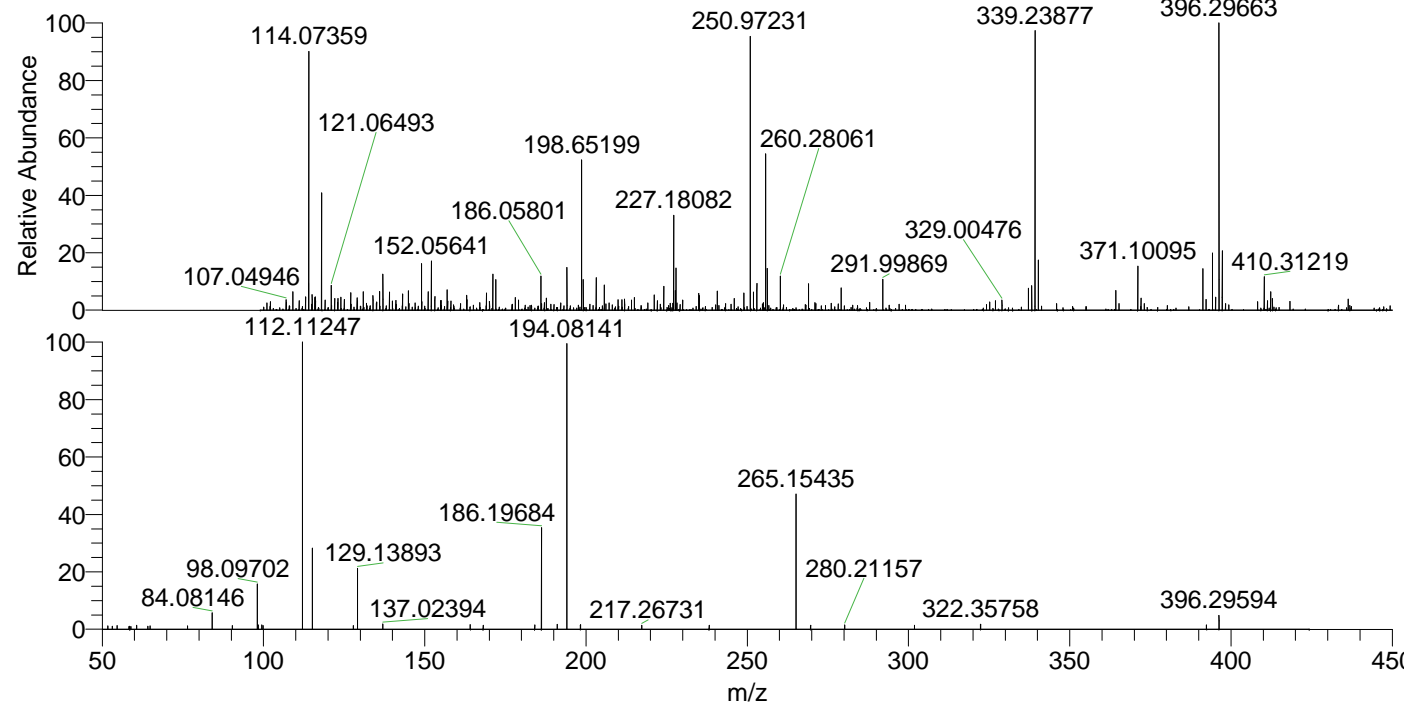
NL: 3.86E7  
 Base Peak m/z= 396.29351-396.30143 F:  
 FTMS + p ESI Full ms [100.00-1500.00]  
 MS Hcurta

NL: 6.91E6  
 Base Peak m/z= 198.65066-198.65464 F:  
 FTMS + p ESI Full ms [100.00-1500.00]  
 MS Hcurta

NL: 5.13E6  
 Base Peak m/z= 50.00000-1500.00000 F:  
 FTMS + p ESI d Full ms2  
 396.30@hcd35.00 [50.00-420.00] MS  
 Hcurta

Hcurta#1997-2007 RT: 4.97-5.00 AV: 3  
 F: FTMS + p ESI d Full ms2 396.30 ...  
 m/z= 50.00000-1000.00000

m/z	Intensity	Relative
51.73785	1044.0	1.12
53.13086	1009.9	1.09
54.57186	1161.0	1.25
58.27206	933.1	1.00
58.53457	1018.4	1.10
58.91374	896.9	0.96
60.70110	1245.3	1.34
64.10274	932.0	1.00
64.80228	1100.8	1.18
76.49055	1079.5	1.16
84.08146	5153.5	5.54
90.35138	1119.9	1.20
98.09702	14426.9	15.52
98.42321	1353.6	1.46
99.50884	1391.5	1.50
99.86714	1126.1	1.21
112.11247	92971.7	100.00
115.12341	26401.4	28.40
127.84925	1188.3	1.28
129.13893	19308.3	20.77
137.02394	1670.0	1.80
164.13516	1553.0	1.67
168.12558	1226.1	1.32
184.10604	1315.4	1.41
186.19684	32535.3	34.99
191.12125	1517.5	1.63
194.08141	92560.2	99.56
198.28922	1427.2	1.54
217.26731	1279.2	1.38
238.20621	1257.4	1.35
265.15435	43123.3	46.38
269.65647	1302.5	1.40
280.21157	1319.2	1.42
301.86821	1303.0	1.40
322.35758	1626.2	1.75
392.40620	1343.0	1.44
396.29594	4497.4	4.84



NL: 6.30E5  
 Hcurta#1999 RT: 4.98  
 AV: 1 T: FTMS + p ESI  
 Full lock ms  
 [100.00-1500.00]

NL: 9.02E4  
 Hcurta#1989-2014 RT:  
 4.97-5.00 AV: 3 F: FTMS  
 + p ESI d Full ms2  
 396.30@hcd35.00  
 [50.00-420.00]