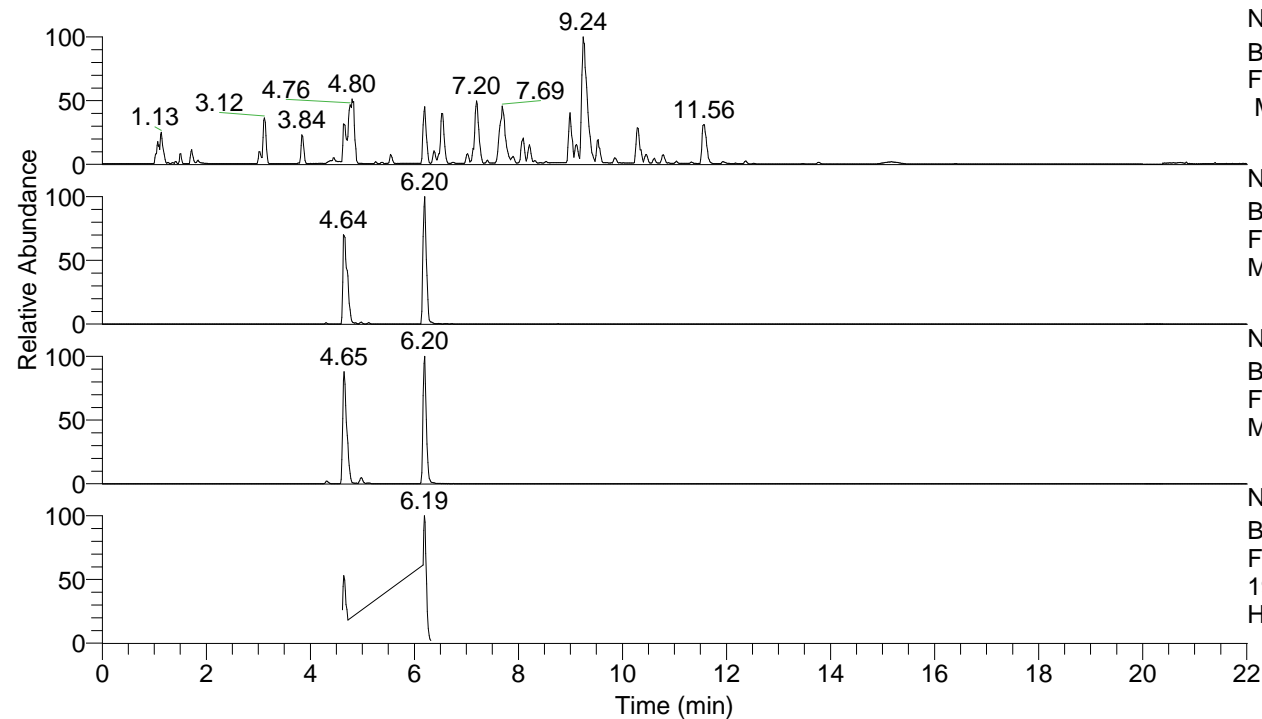


RT: 0.00 - 22.01



NL: 8.52E7
 Base Peak m/z= 100.00000-1500.00000
 F: FTMS + p ESI Full ms [100.00-1500.00]
 MS Hcurta

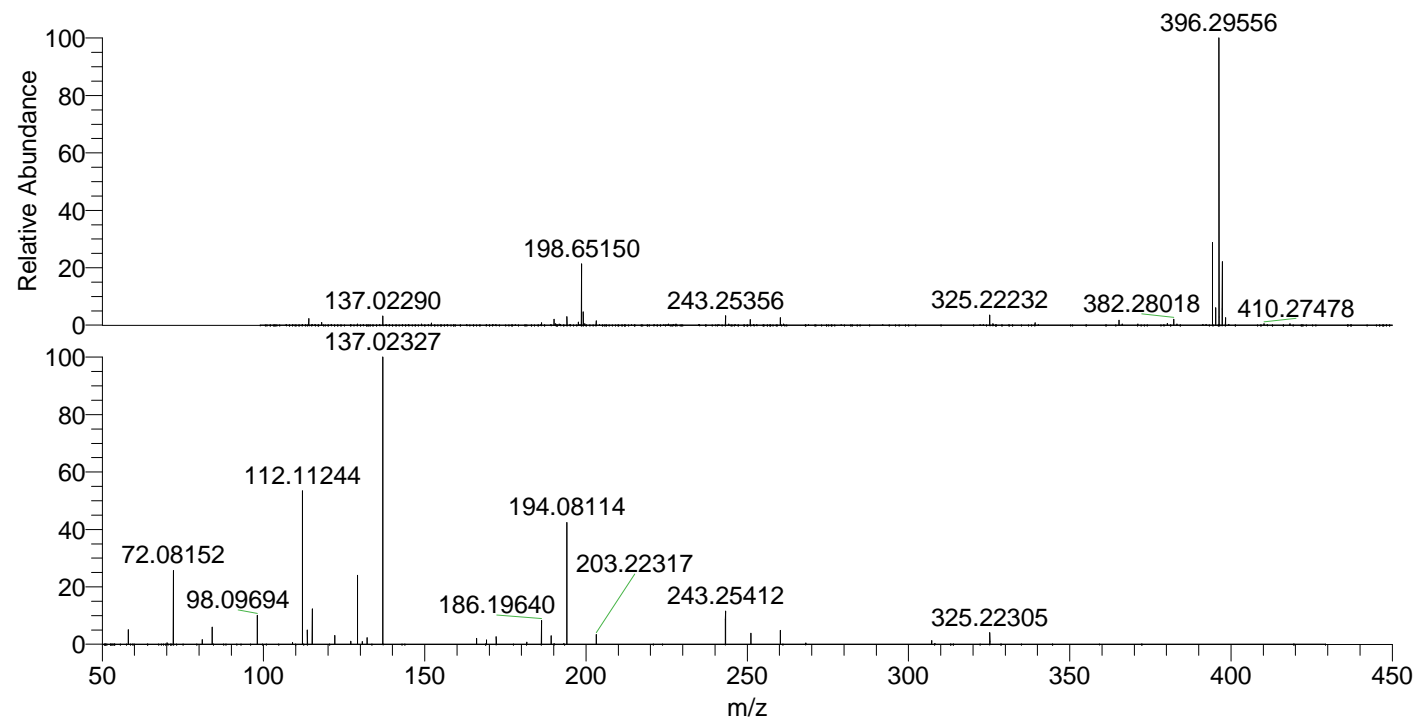
NL: 3.86E7
 Base Peak m/z= 396.29351-396.30143 F:
 FTMS + p ESI Full ms [100.00-1500.00]
 MS Hcurta

NL: 6.91E6
 Base Peak m/z= 198.65066-198.65464 F:
 FTMS + p ESI Full ms [100.00-1500.00]
 MS Hcurta

NL: 3.21E6
 Base Peak m/z= 50.00000-1500.00000 F:
 FTMS + p ESI d Full ms2
 198.65@hcd35.00 [50.00-425.00] MS
 Hcurta

Hcurta#1847-1890 RT: 4.62-4.72 AV: 8
 F: FTMS + p ESI d Full ms2 198.65@h ...
 m/z= 50.00000-1000.00000

m/z	Intensity	Relative
58.06595	55843.8	5.10
70.06587	5517.6	0.50
72.08152	284615.7	26.00
81.03409	17647.5	1.61
84.08135	65359.4	5.97
98.09694	111477.8	10.18
109.02856	7216.4	0.66
112.11244	583384.2	53.29
113.61780	54342.5	4.96
115.12329	134541.5	12.29
122.13097	34070.9	3.11
127.03903	11736.5	1.07
129.13872	271102.2	24.76
130.64420	10597.5	0.97
132.14955	24681.7	2.25
137.02327	1094741.5	100.00
166.04994	23104.6	2.11
169.16976	16953.8	1.55
172.18101	28447.5	2.60
181.62566	7786.2	0.71
186.19640	90652.2	8.28
189.20712	31973.3	2.92
194.08114	461969.3	42.20
203.22317	37281.0	3.41
243.25412	126540.5	11.56
251.13882	41860.2	3.82
260.28068	53446.8	4.88
307.21204	14115.3	1.29
325.22305	44944.6	4.11



NL: 2.58E7
 Hcurta#1855 RT: 4.64
 AV: 1 T: FTMS + p ESI
 Full ms [100.00-1500.00]

NL: 1.09E6
 Hcurta#1818-1910 RT:
 4.62-4.72 AV: 8 F: FTMS
 + p ESI d Full ms2
 198.65@hcd35.00
 [50.00-425.00]