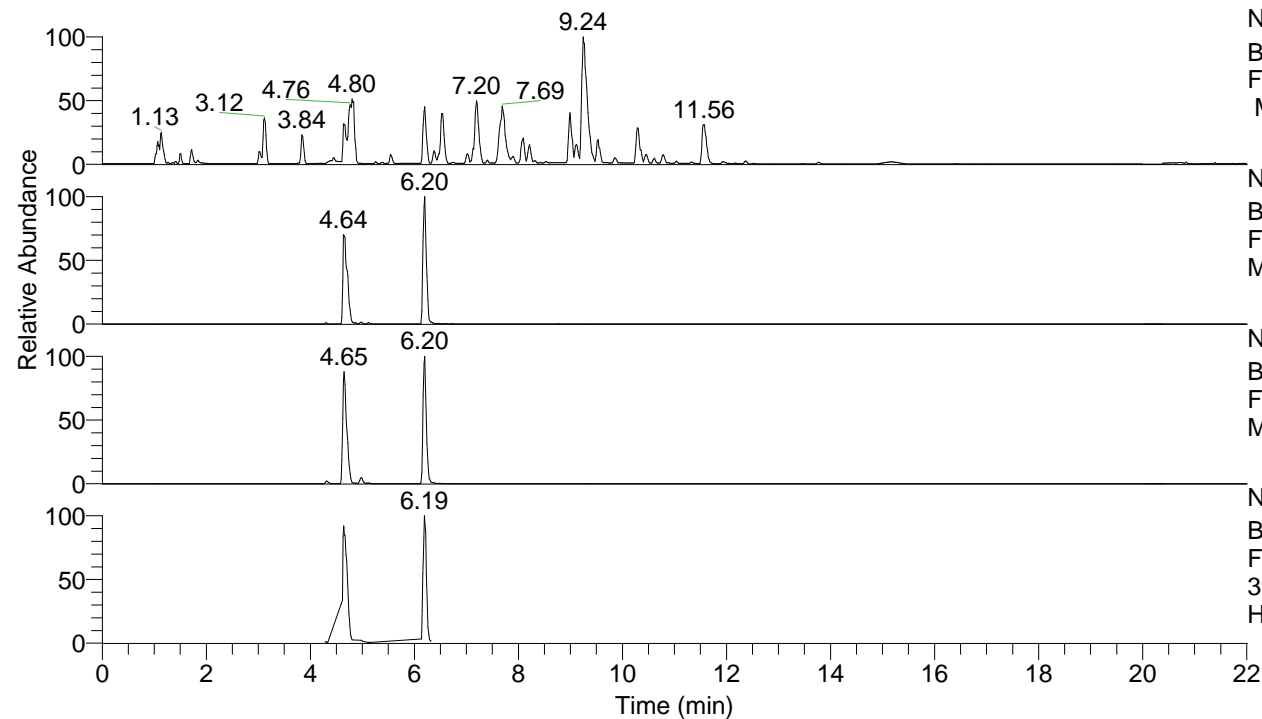


RT: 0.00 - 22.01



NL: 8.52E7  
 Base Peak m/z= 100.00000-1500.00000  
 F: FTMS + p ESI Full ms [100.00-1500.00]  
 MS Hcurta

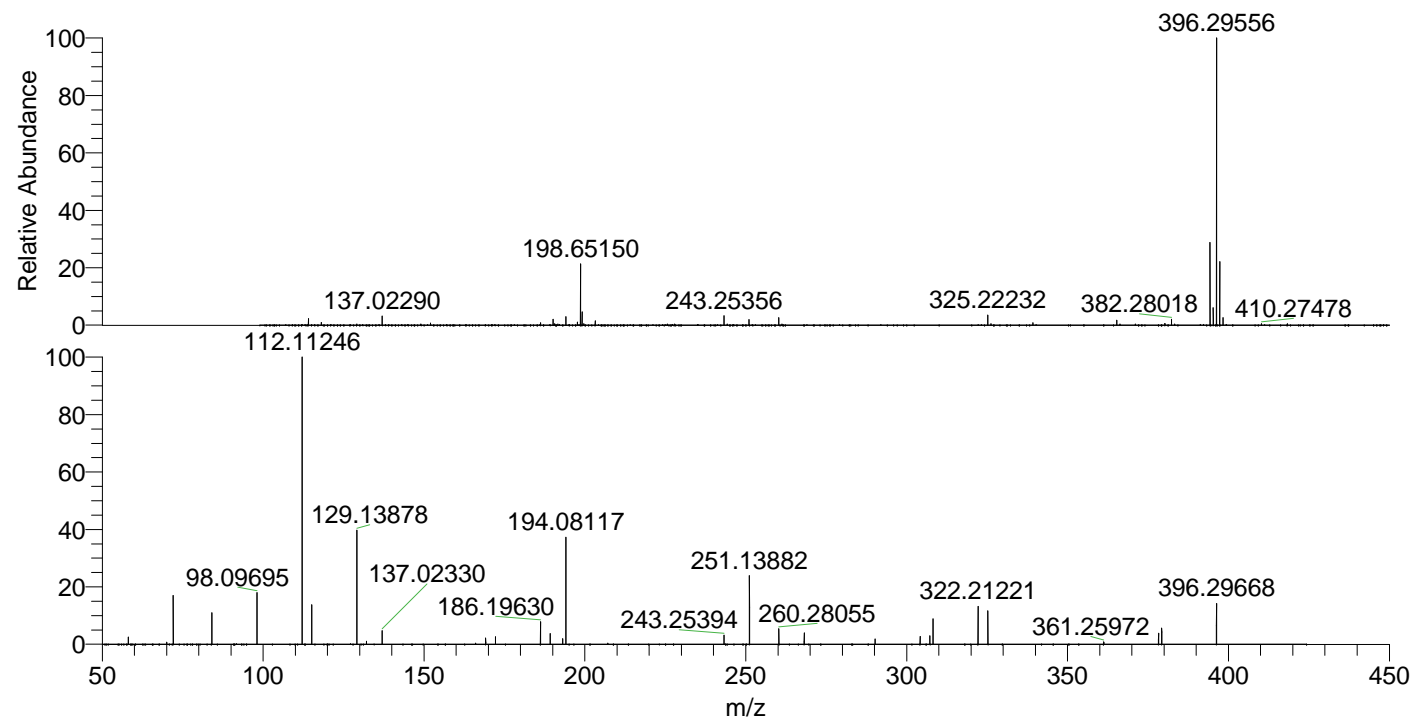
NL: 3.86E7  
 Base Peak m/z= 396.29351-396.30143 F:  
 FTMS + p ESI Full ms [100.00-1500.00]  
 MS Hcurta

NL: 6.91E6  
 Base Peak m/z= 198.65066-198.65464 F:  
 FTMS + p ESI Full ms [100.00-1500.00]  
 MS Hcurta

NL: 5.13E6  
 Base Peak m/z= 50.00000-1500.00000 F:  
 FTMS + p ESI d Full ms2  
 396.30@hcd35.00 [50.00-420.00] MS  
 Hcurta

Hcurta#1846-1899 RT: 4.62-4.74 AV: 10  
 F: FTMS + p ESI d Full ms2 396.30@h ...  
 m/z= 50.00000-1000.00000

m/z	Intensity	Relative
58.06593	75445.7	2.50
70.06587	22621.4	0.75
72.08153	517077.6	17.14
84.08138	336613.5	11.16
98.09695	550153.4	18.23
112.11246	3017225.0	100.00
115.12333	417314.2	13.83
129.13878	1228073.0	40.70
132.14965	31103.6	1.03
137.02330	143084.8	4.74
169.16998	67867.9	2.25
172.18086	78349.9	2.60
186.19630	238241.5	7.90
189.20728	115056.3	3.81
193.09717	60177.3	1.99
194.08117	1122780.5	37.21
243.25394	97147.4	3.22
251.13882	722394.1	23.94
260.28055	166078.1	5.50
268.16568	118497.1	3.93
290.18621	57023.0	1.89
304.20179	86119.9	2.85
307.21277	92945.3	3.08
308.19657	277985.3	9.21
322.21221	410017.1	13.59
325.22307	357560.4	11.85
361.25972	24562.0	0.81
378.28582	116797.7	3.87
379.26989	168748.0	5.59
396.29668	427995.8	14.19



NL: 2.58E7  
 Hcurta#1855 RT: 4.64  
 AV: 1 T: FTMS + p ESI  
 Full ms [100.00-1500.00]

NL: 3.01E6  
 Hcurta#1843-1900 RT:  
 4.62-4.74 AV: 10 F:  
 FTMS + p ESI d Full ms2  
 396.30@hcd35.00  
 [50.00-420.00]