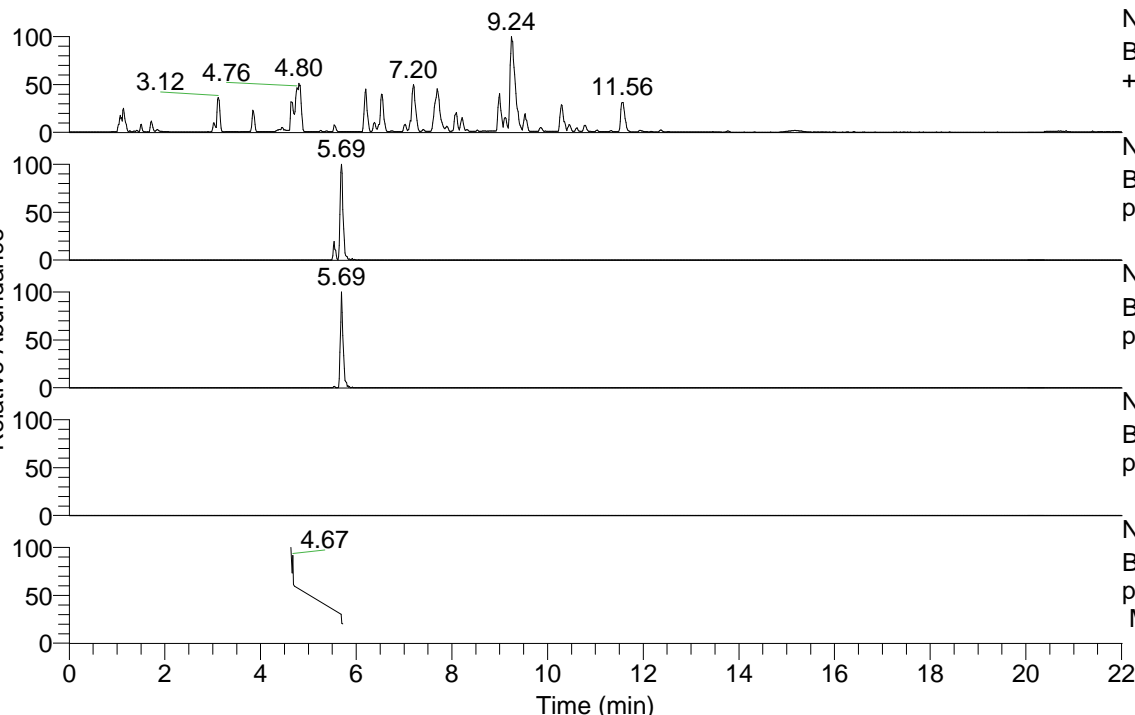


RT: 0.00 - 22.01



NL: 8.52E7
 Base Peak m/z= 100.00000-1500.00000 F: FTMS + p ESI Full ms [100.00-1500.00] MS Hcurta

NL: 2.64E5
 Base Peak m/z= 395.30024-395.30420 F: FTMS + p ESI Full ms [100.00-1500.00] MS Hcurta

NL: 1.35E5
 Base Peak m/z= 198.15403-198.15601 F: FTMS + p ESI Full ms [100.00-1500.00] MS Hcurta

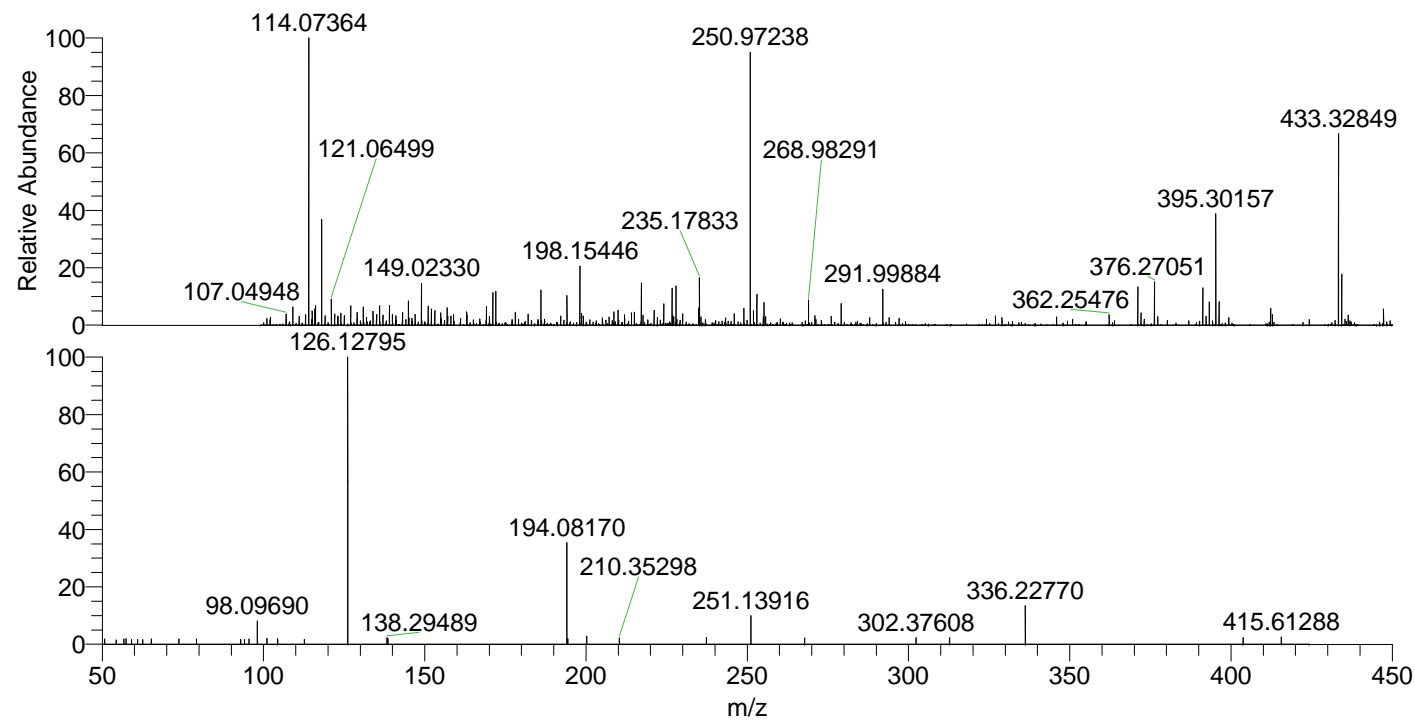
NL: 0
 Base Peak m/z= 509.29253-509.29763 F: FTMS + p ESI Full ms [100.00-1500.00] MS Hcurta

NL: 2.62E5
 Base Peak m/z= 50.00000-1500.00000 F: FTMS + p ESI d Full ms2 395.28@hcd35.00 [50.00-420.00] MS Hcurta

Hcurta#2280-2291 RT: 5.69-5.72 AV: 3

F: FTMS + p ESI d Full ms2 395.28 ...

m/z	Intensity	Relative
50.72710	1069.1	1.82
50.76352	978.1	1.67
50.77116	951.3	1.62
54.31030	905.2	1.54
56.74735	1098.8	1.87
57.36040	1124.4	1.92
59.03700	915.9	1.56
60.94179	999.0	1.70
62.58540	939.2	1.60
65.22248	1093.5	1.86
73.76703	1069.6	1.82
79.20640	1078.0	1.84
92.93296	1048.1	1.79
94.14650	985.3	1.68
95.47074	1066.8	1.82
98.09690	4849.4	8.27
101.06903	1236.6	2.11
104.39110	1170.5	2.00
112.66239	1039.1	1.77
126.12795	58651.6	100.00
138.29489	1323.3	2.26
138.59192	1126.7	1.92
194.08170	20638.6	35.19
194.36481	1142.3	1.95
200.21320	1678.9	2.86
210.35298	1294.3	2.21
237.35562	1414.2	2.41
251.13916	5793.7	9.88
267.78107	1254.3	2.14
302.37608	1362.5	2.32
312.73653	1311.7	2.24
336.22770	7915.6	13.50
403.78077	1300.1	2.22
415.61288	1449.0	2.47



NL: 6.47E5
 Hcurta#2281 RT: 5.69
 AV: 1 T: FTMS + p ESI
 Full lock ms
 [100.00-1500.00]

NL: 5.82E4
 Hcurta#2228-2348 RT:
 5.69-5.72 AV: 3 F: FTMS
 + p ESI d Full ms2
 395.28@hcd35.00
 [50.00-420.00]