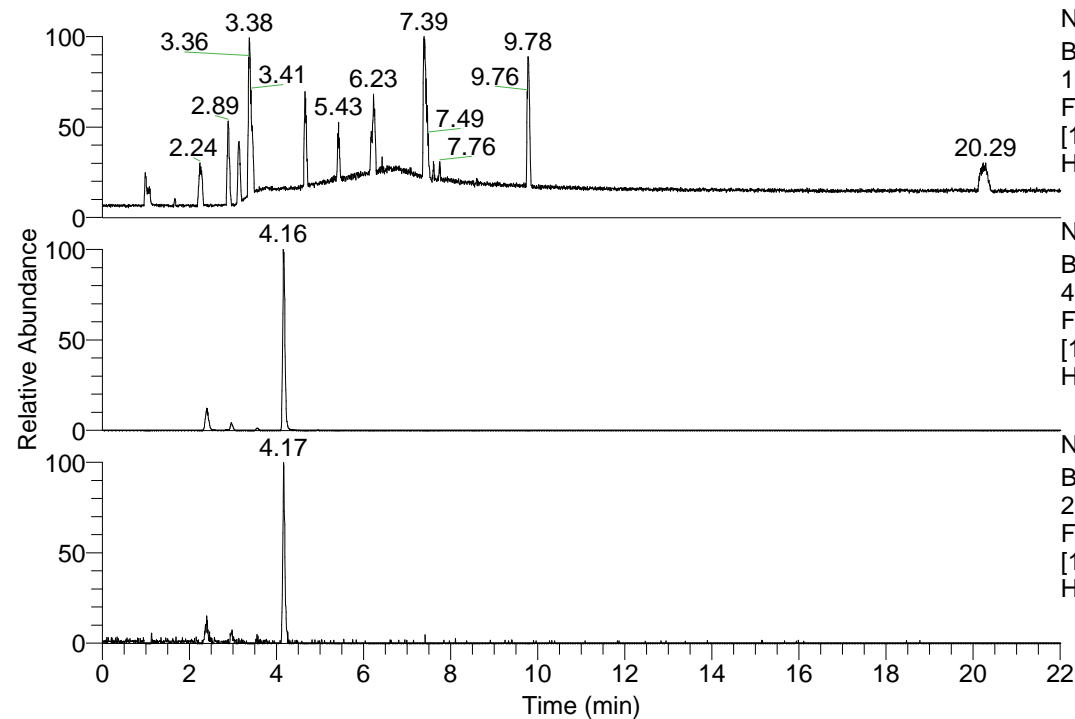


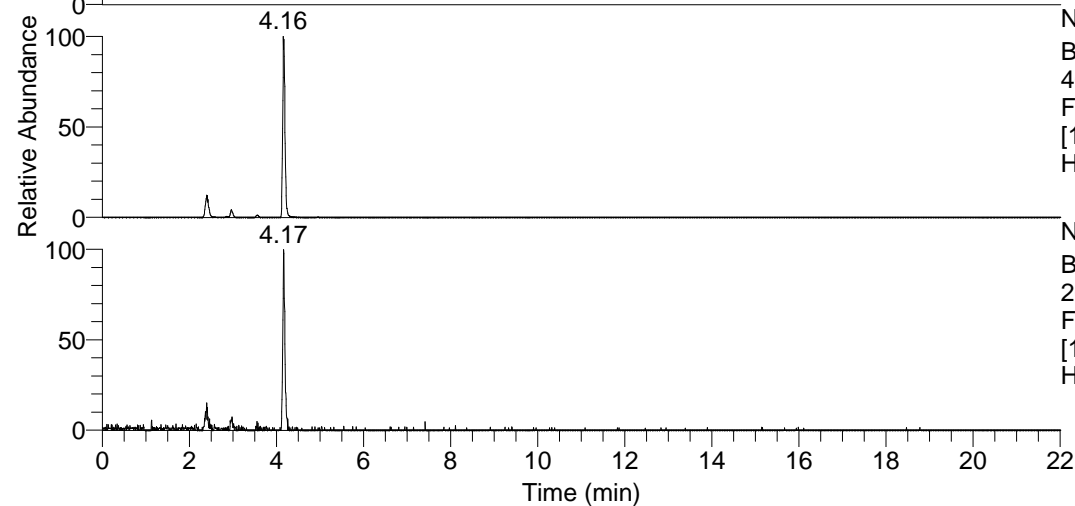
RT: 0.00 - 22.01



NL: 1.13E8
Base Peak m/z=
100.00000-1500.00000 F:
FTMS + p ESI Full ms
[100.00-1500.00] MS
Hcurta_HDX

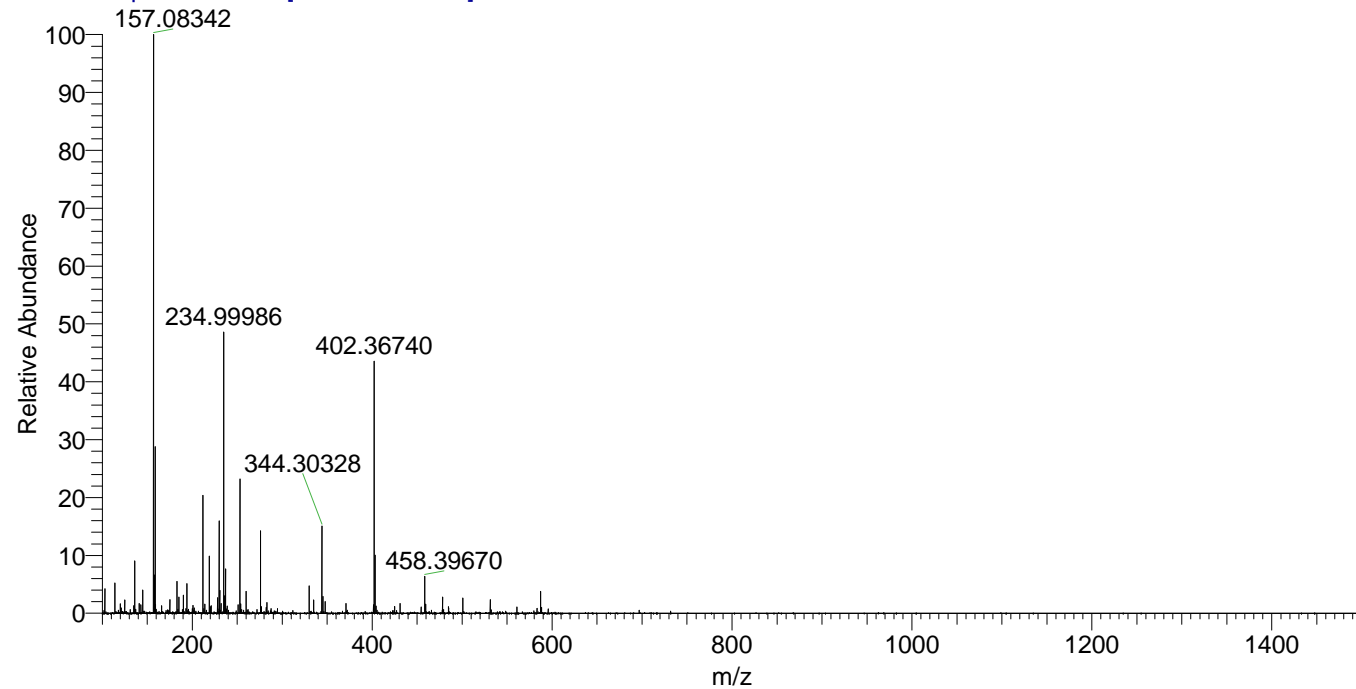
Hcurta_HDX#651 RT: 4.16
T: FTMS + p ESI Full ms [100.00-1500.00]
m/z= 402.00000-403.00000

m/z	Intensity	Relative	Delta (ppm)	Composition
402.36740	8787526.0	100.00	-1.16	C ₂₁ H ₃₂ ² H ₈ O ₂ N ₅
			2.69	C ₂₁ H ₃₀ ² H ₉ O ₂ N ₅



NL: 8.79E6
Base Peak m/z=
402.36641-402.37043 F:
FTMS + p ESI Full ms
[100.00-1500.00] MS
Hcurta_HDX

Hcurta_HDX #651 RT: 4.16 AV: 1 NL: 1.89E7
T: FTMS + p ESI Full ms [100.00-1500.00]



Hcurta_HDX #651 RT: 4.16 AV: 1 NL: 8.25E6
T: FTMS + p ESI Full ms [100.00-1500.00]

