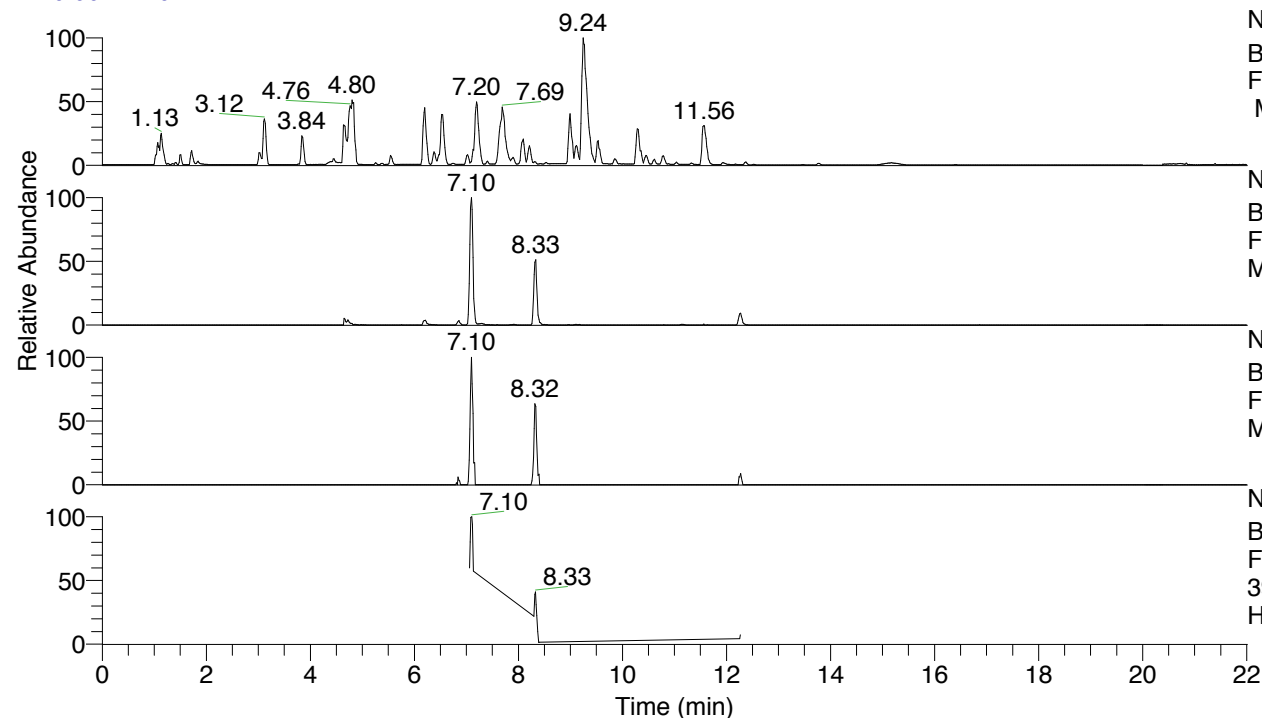


RT: 0.00 - 22.01



NL: 8.52E7
 Base Peak m/z= 100.00000-1500.00000
 F: FTMS + p ESI Full ms [100.00-1500.00]
 MS Hcurta

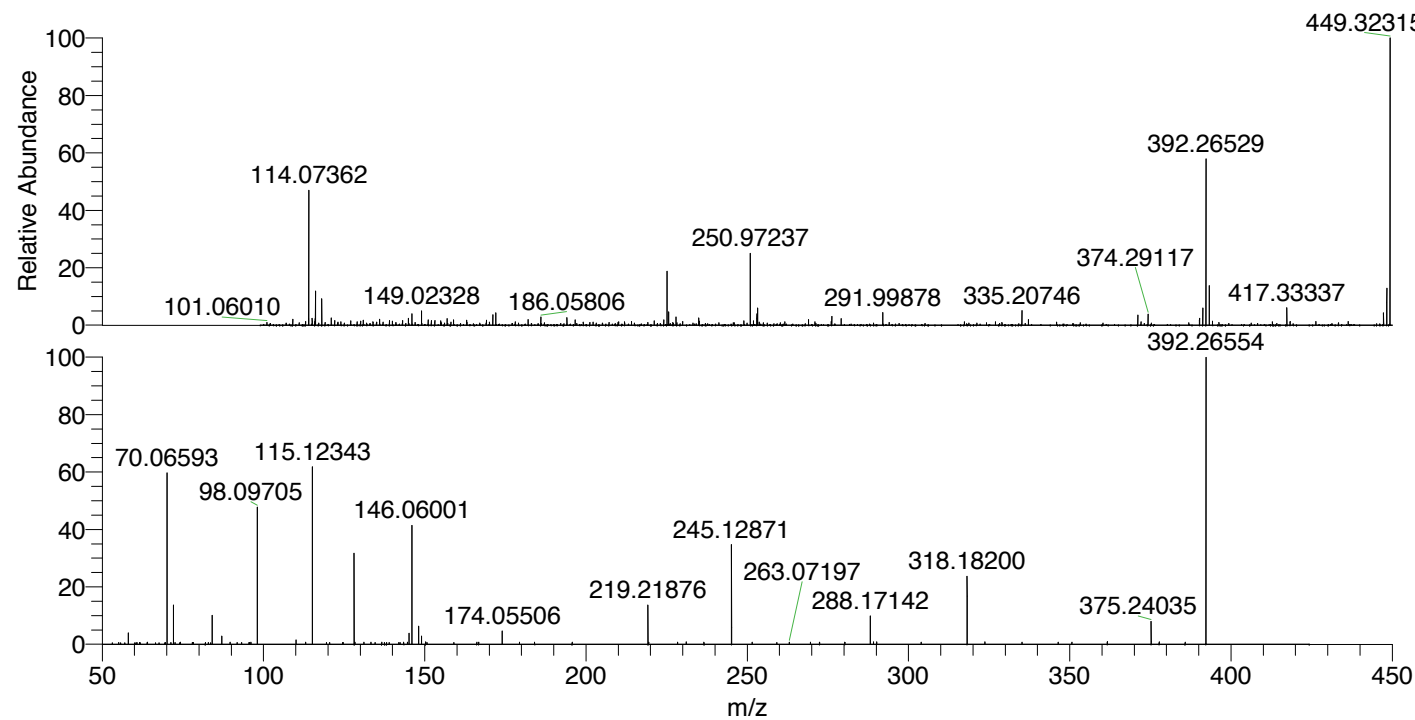
NL: 2.55E6
 Base Peak m/z= 392.26420-392.26812 F:
 FTMS + p ESI Full ms [100.00-1500.00]
 MS Hcurta

NL: 6.45E4
 Base Peak m/z= 196.63602-196.63798 F:
 FTMS + p ESI Full ms [100.00-1500.00]
 MS Hcurta

NL: 3.44E5
 Base Peak m/z= 50.00000-1500.00000 F:
 FTMS + p ESI d Full ms2
 392.27@hcd35.00 [50.00-420.00] MS
 Hcurta

Hcurta#3330-3359 RT: 8.30-8.37 AV: 6
 F: FTMS + p ESI d Full ms2 392.27 ...
 m/z= 50.00000-1000.00000

m/z	Intensity	Relative
58.06602	3814.4	4.06
64.08446	655.8	0.70
70.06593	57045.2	60.78
72.08160	12886.4	13.73
84.08157	9779.1	10.42
87.09260	2716.6	2.89
89.66259	641.3	0.68
96.09278	671.7	0.72
98.09705	45250.3	48.21
110.09682	1404.3	1.50
113.10717	647.4	0.69
115.12343	58142.6	61.95
128.10740	29886.9	31.84
128.37855	647.4	0.69
131.11800	655.1	0.70
133.31849	661.6	0.70
136.65640	648.4	0.69
143.46736	703.1	0.75
143.48965	685.2	0.73
144.62503	654.1	0.70
145.13376	3587.3	3.82
146.06001	39814.9	42.42
148.14447	6000.9	6.39
149.02374	2656.4	2.83
150.25681	772.2	0.82
166.13396	672.7	0.72
166.72528	655.7	0.70
174.05506	4291.3	4.57
179.40379	653.8	0.70
195.71334	649.9	0.69
219.21876	13282.2	14.15
219.44613	713.8	0.76
228.39331	724.2	0.77
231.11465	848.8	0.90
236.58978	663.7	0.71
245.12871	32591.7	34.72
251.54708	673.4	0.72
263.07197	651.3	0.69
269.61597	663.9	0.71
272.42715	728.5	0.78
280.27230	688.8	0.73
288.17142	9277.0	9.88
289.17270	772.7	0.82
290.15072	756.9	0.81
303.94973	701.1	0.75
318.18200	22432.4	23.90
323.69269	774.3	0.82
335.20571	715.6	0.76
346.41880	713.2	0.76
350.67909	693.7	0.74
361.66576	870.8	0.93
375.24035	7484.0	7.97
377.75692	802.0	0.85
385.80404	685.0	0.73
392.26554	93859.5	100.00



NL: 2.16E6
 Hcurta#3343 RT: 8.33
 AV: 1 T: FTMS + p ESI
 Full lock ms
 [100.00-1500.00]

NL: 9.38E4
 Hcurta#3324-3363 RT:
 8.30-8.37 AV: 6 F: FTMS
 + p ESI d Full ms2
 392.27@hcd35.00
 [50.00-420.00]

Hcurta#3330-3359 RT: 8.30-8.37 AV: 6

F: FTMS + p ESI d Full ms2 392.27@hcd35.00 [50.00-420.00]

m/z= 50.00000-1000.00000

m/z	Intensity	Relative
53.15349	515.2	0.55
55.15794	607.2	0.65
56.99168	499.8	0.53
58.06602	3814.4	4.06
60.04255	480.9	0.51
60.46892	506.2	0.54
60.79700	545.4	0.58
61.52221	531.1	0.57
61.65876	507.4	0.54
61.76786	472.5	0.50
63.95756	619.4	0.66
64.08446	655.8	0.70
66.48214	519.0	0.55
67.63129	500.6	0.53
69.40176	486.3	0.52
69.63429	589.4	0.63
70.06593	57045.2	60.78
71.26949	531.7	0.57
71.28262	535.0	0.57
72.08160	12886.4	13.73
72.54487	618.7	0.66
74.01457	494.4	0.53
74.25684	632.5	0.67
77.95649	547.8	0.58
78.01208	534.1	0.57
78.17343	599.8	0.64
78.21907	562.0	0.60
81.96296	539.8	0.58
82.94810	549.1	0.59
83.62928	533.2	0.57
84.08157	9779.1	10.42
87.09260	2716.6	2.89
89.66259	641.3	0.68
91.86858	587.9	0.63
93.25687	541.1	0.58
95.52221	584.0	0.62
95.68651	579.0	0.62
96.09278	671.7	0.72
98.09705	45250.3	48.21

Hcurta#3330-3359 RT: 8.30-8.37 AV: 6

F: FTMS + p ESI d Full ms2 392.27@hcd35.00 [50.00-420.00]

m/z= 50.00000-1000.00000

m/z	Intensity	Relative
98.10265	582.4	0.62
110.09682	1404.3	1.50
113.10717	647.4	0.69
115.12343	58142.6	61.95
119.51218	561.8	0.60
120.50475	587.7	0.63
124.61299	615.2	0.66
124.71322	590.6	0.63
128.10740	29886.9	31.84
128.37855	647.4	0.69
131.11800	655.1	0.70
133.31849	661.6	0.70
134.57648	613.8	0.65
136.65640	648.4	0.69
137.53777	566.9	0.60
138.14406	605.2	0.64
138.95935	574.6	0.61
141.99190	592.4	0.63
142.32459	597.9	0.64
143.46736	703.1	0.75
143.48965	685.2	0.73
144.62503	654.1	0.70
145.13376	3587.3	3.82
146.06001	39814.9	42.42
148.14447	6000.9	6.39
149.02374	2656.4	2.83
150.25681	772.2	0.82
150.73425	592.0	0.63
159.06028	594.5	0.63
166.13396	672.7	0.72
166.72528	655.7	0.70
174.05506	4291.3	4.57
179.40379	653.8	0.70
184.08477	639.0	0.68
195.71334	649.9	0.69
219.21876	13282.2	14.15
219.44613	713.8	0.76
228.39331	724.2	0.77
231.11465	848.8	0.90

Hcurta#3330-3359 RT: 8.30-8.37 AV: 6

F: FTMS + p ESI d Full ms2 392.27@hcd35.00 [50.00-420.00]

m/z= 50.00000-1000.00000

m/z	Intensity	Relative
236.58978	663.7	0.71
245.12871	32591.7	34.72
251.54708	673.4	0.72
259.19774	633.7	0.68
263.07197	651.3	0.69
269.61597	663.9	0.71
272.42715	728.5	0.78
280.27230	688.8	0.73
288.17142	9277.0	9.88
289.17270	772.7	0.82
290.15072	756.9	0.81
303.94973	701.1	0.75
318.18200	22432.4	23.90
323.69269	774.3	0.82
335.20571	715.6	0.76
346.41880	713.2	0.76
350.67909	693.7	0.74
361.66576	870.8	0.93
375.24035	7484.0	7.97
377.75692	802.0	0.85
385.80404	685.0	0.73
392.26554	93859.5	100.00