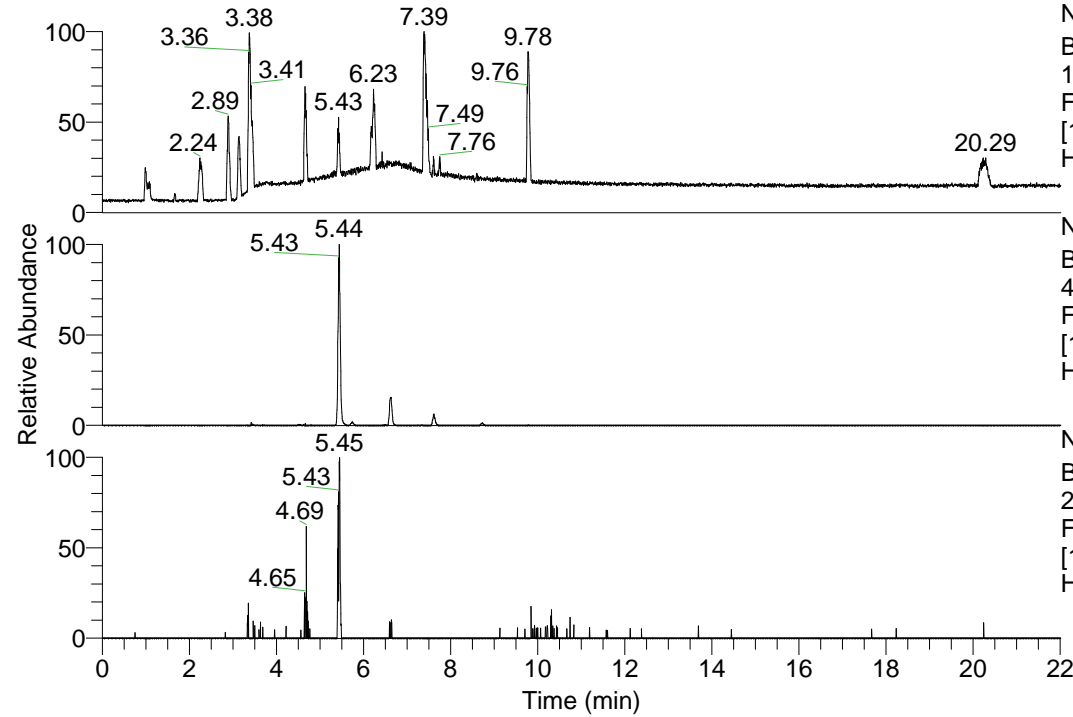


RT: 0.00 - 22.01



NL: 1.13E8
Base Peak m/z=
100.00000-1500.00000 F:
FTMS + p ESI Full ms
[100.00-1500.00] MS
Hcurta_HDX

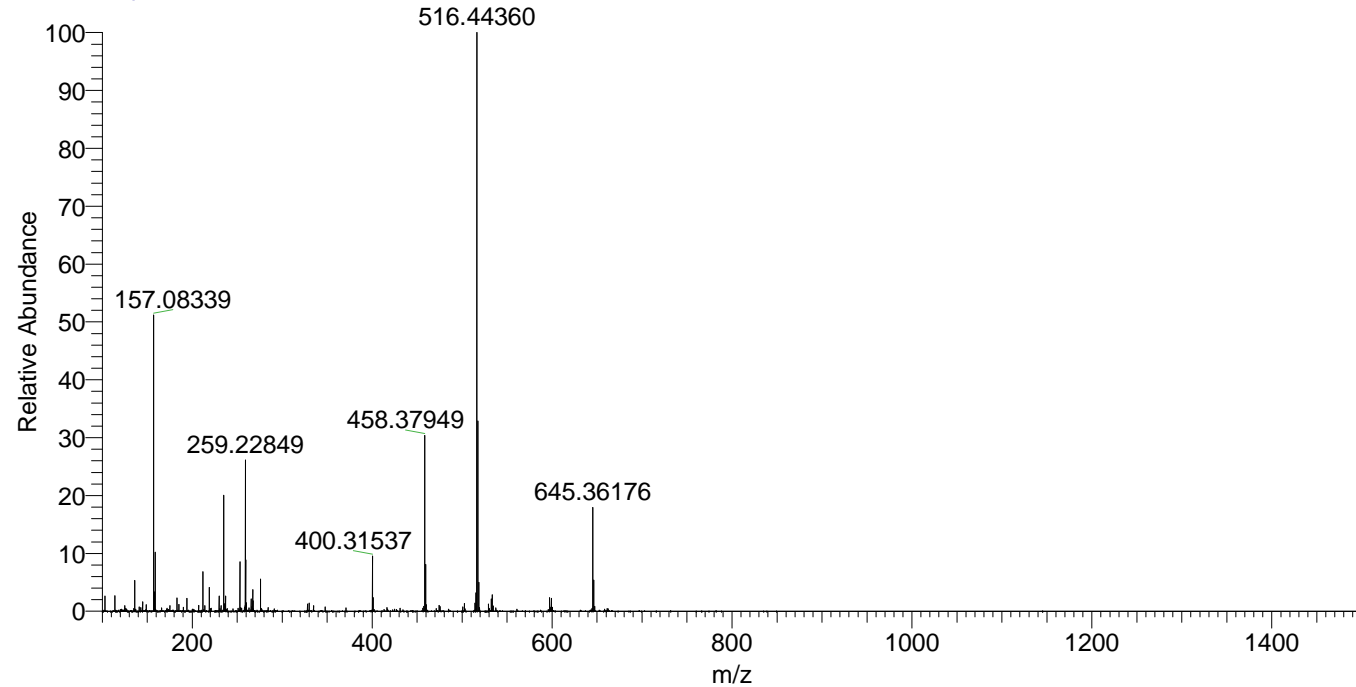
NL: 5.01E6
Base Peak m/z=
400.31438-400.31838 F:
FTMS + p ESI Full ms
[100.00-1500.00] MS
Hcurta_HDX

NL: 6.23E4
Base Peak m/z=
201.16423-201.16625 F:
FTMS + p ESI Full ms
[100.00-1500.00] MS
Hcurta_HDX

Hcurta_HDX#862 RT: 5.44
T: FTMS + p ESI Full ms [100.00-1500.00]
m/z= 400.00000-401.00000

m/z	Intensity	Relative	Delta (ppm)	Composition
400.31537	4342561.5	100.00	-1.15	C ₂₀ H ₂₆ ² H ₈ O ₃ N ₅
			2.71	C ₂₀ H ₂₄ ² H ₉ O ₃ N ₅

Hcurta_HDX #862 RT: 5.44 AV: 1 NL: 4.43E7
T: FTMS + p ESI Full ms [100.00-1500.00]



Hcurta_HDX #862 RT: 5.44 AV: 1 NL: 4.23E6
T: FTMS + p ESI Full ms [100.00-1500.00]

