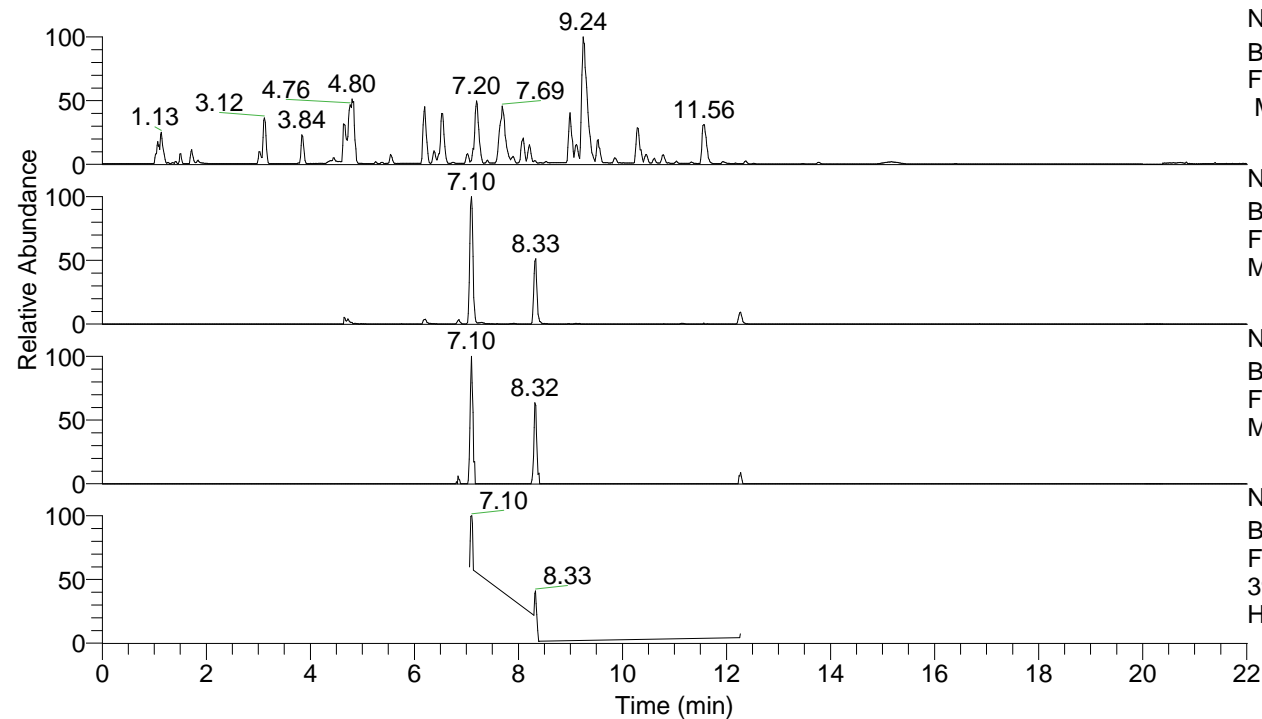


RT: 0.00 - 22.01



NL: 8.52E7
 Base Peak m/z= 100.00000-1500.00000
 F: FTMS + p ESI Full ms [100.00-1500.00]
 MS Hcurta

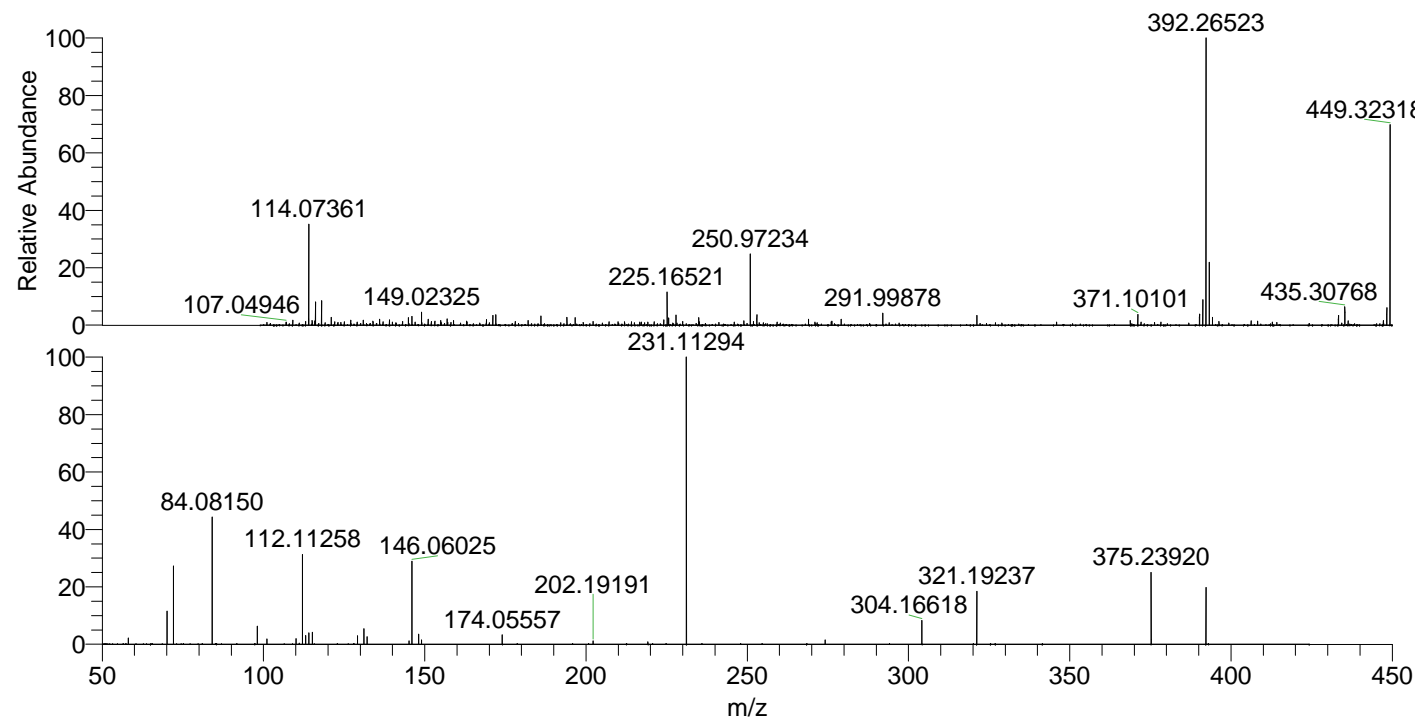
NL: 2.55E6
 Base Peak m/z= 392.26420-392.26812 F:
 FTMS + p ESI Full ms [100.00-1500.00]
 MS Hcurta

NL: 6.45E4
 Base Peak m/z= 196.63602-196.63798 F:
 FTMS + p ESI Full ms [100.00-1500.00]
 MS Hcurta

NL: 3.44E5
 Base Peak m/z= 50.00000-1500.00000 F:
 FTMS + p ESI d Full ms2
 392.27@hcd35.00 [50.00-420.00] MS
 Hcurta

Hcurta#2831-2859 RT: 7.06-7.13 AV: 6
 F: FTMS + p ESI d Full ms2 392.27 ...
 m/z= 50.00000-1000.00000

m/z	Intensity	Relative
58.06609	5942.1	2.24
70.06593	30774.8	11.59
72.08161	72454.7	27.29
84.08150	119781.5	45.12
98.09717	16524.4	6.22
101.10810	4985.5	1.88
110.09729	5223.0	1.97
112.11258	82392.6	31.04
113.10811	8132.3	3.06
114.09205	10574.0	3.98
115.12371	11176.3	4.21
129.13915	7892.2	2.97
131.11851	14758.8	5.56
132.14976	7106.0	2.68
145.13409	3122.3	1.18
146.06025	76533.3	28.83
148.14516	9291.9	3.50
149.02387	3924.1	1.48
174.05557	8778.2	3.31
202.19191	3295.6	1.24
219.21817	2153.5	0.81
231.11294	265468.7	100.00
274.15474	3890.9	1.47
304.16618	22434.2	8.45
321.19237	49072.3	18.49
375.23920	66263.9	24.96
392.26598	53567.7	20.18



NL: 2.45E6
 Hcurta#2845 RT: 7.10
 AV: 1 T: FTMS + p ESI
 Full lock ms
 [100.00-1500.00]

NL: 2.64E5
 Hcurta#2803-2893 RT:
 7.06-7.13 AV: 6 F: FTMS
 + p ESI d Full ms2
 392.27@hcd35.00
 [50.00-420.00]