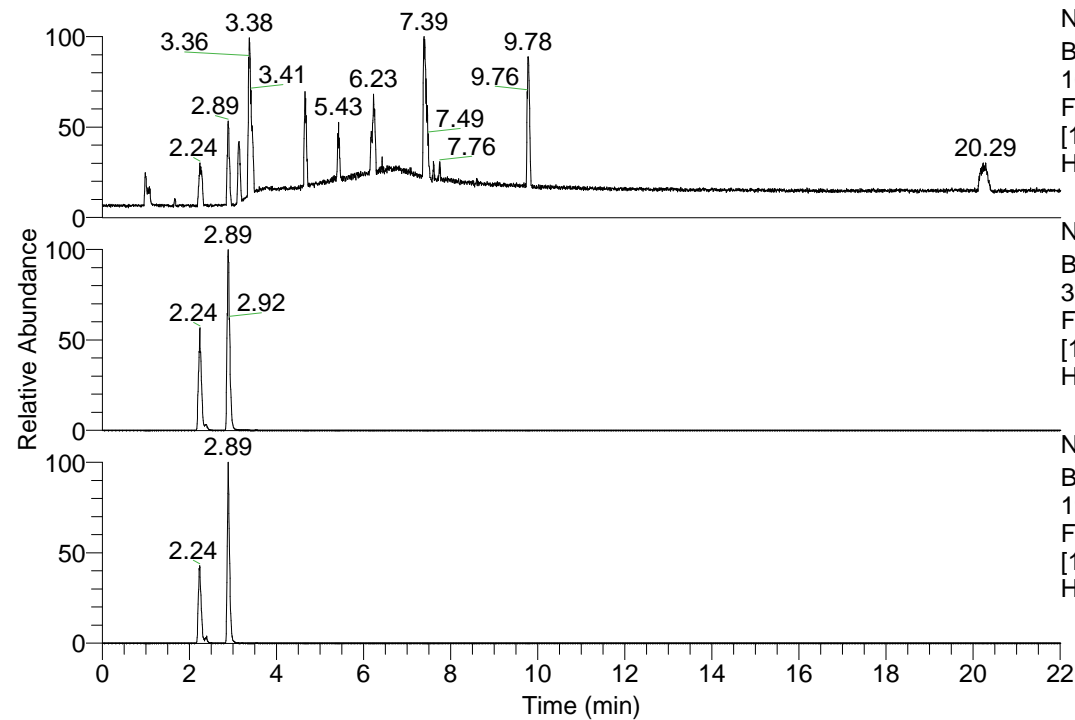


RT: 0.00 - 22.01



NL: 1.13E8
 Base Peak m/z=
 100.00000-1500.00000 F:
 FTMS + p ESI Full ms
 [100.00-1500.00] MS
 Hcurta_HDX

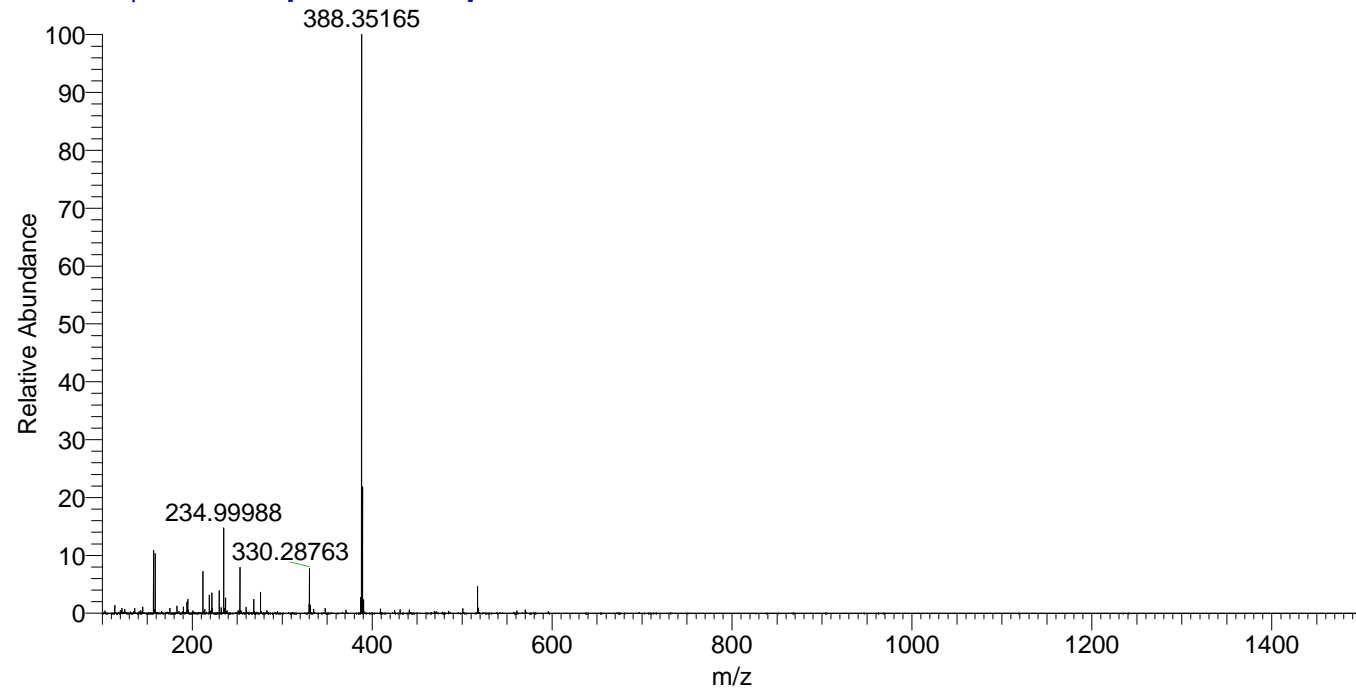
NL: 6.02E7
 Base Peak m/z=
 388.35083-388.35471 F:
 FTMS + p ESI Full ms
 [100.00-1500.00] MS
 Hcurta_HDX

NL: 1.68E6
 Base Peak m/z=
 195.18245-195.18441 F:
 FTMS + p ESI Full ms
 [100.00-1500.00] MS
 Hcurta_HDX

Hcurta_HDX#442 RT: 2.89
 T: FTMS + p ESI Full ms [100.00-1500.00]
 m/z= 388.00000-389.00000

| m/z | Intensity | Relative | Delta (ppm) | Composition |
|-----------|------------|----------|-------------|---|
| 388.35165 | 57820112.0 | 100.00 | -1.45 | C ₂₀ H ₃₀ ² H ₈ O ₂ N ₅ |
| | | | 2.54 | C ₂₀ H ₂₈ ² H ₉ O ₂ N ₅ |

Hcurta_HDX #442 RT: 2.89 AV: 1 NL: 5.60E7
 T: FTMS + p ESI Full ms [100.00-1500.00]



Hcurta_HDX #442 RT: 2.89 AV: 1 NL: 5.60E7
 T: FTMS + p ESI Full ms [100.00-1500.00]

