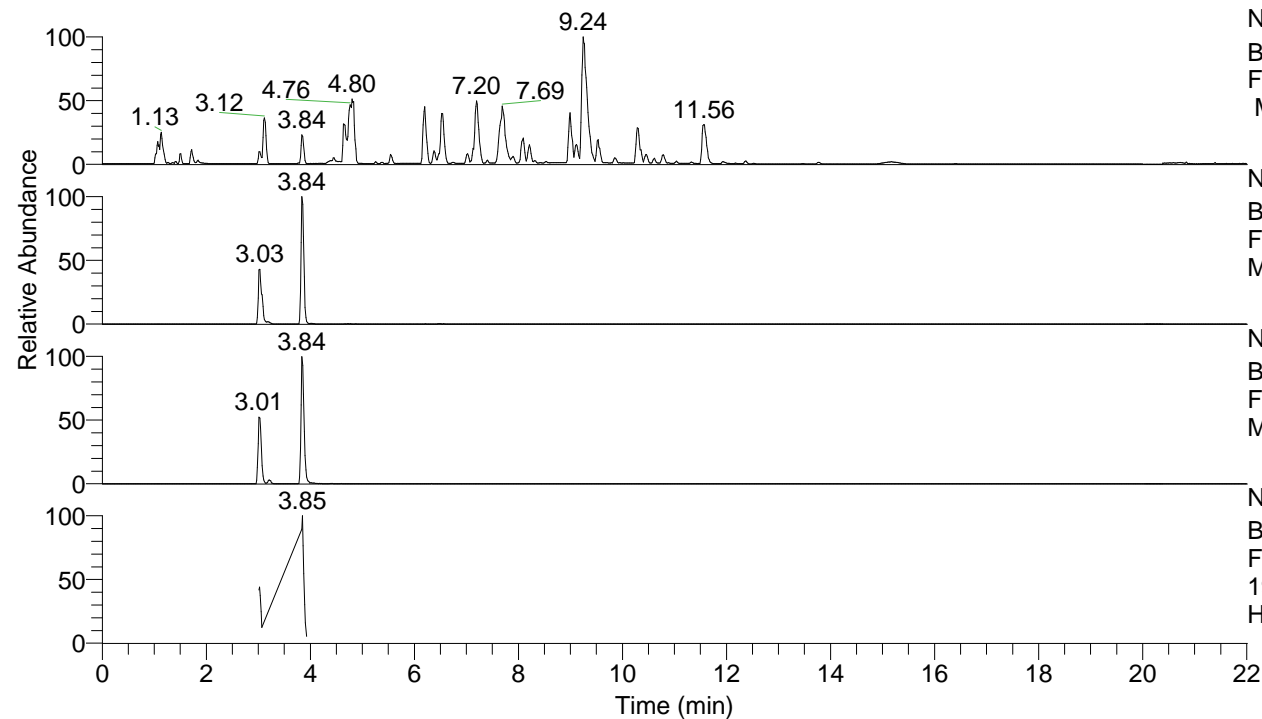


RT: 0.00 - 22.01



NL: 8.52E7
 Base Peak m/z= 100.00000-1500.00000
 F: FTMS + p ESI Full ms [100.00-1500.00]
 MS Hcurta

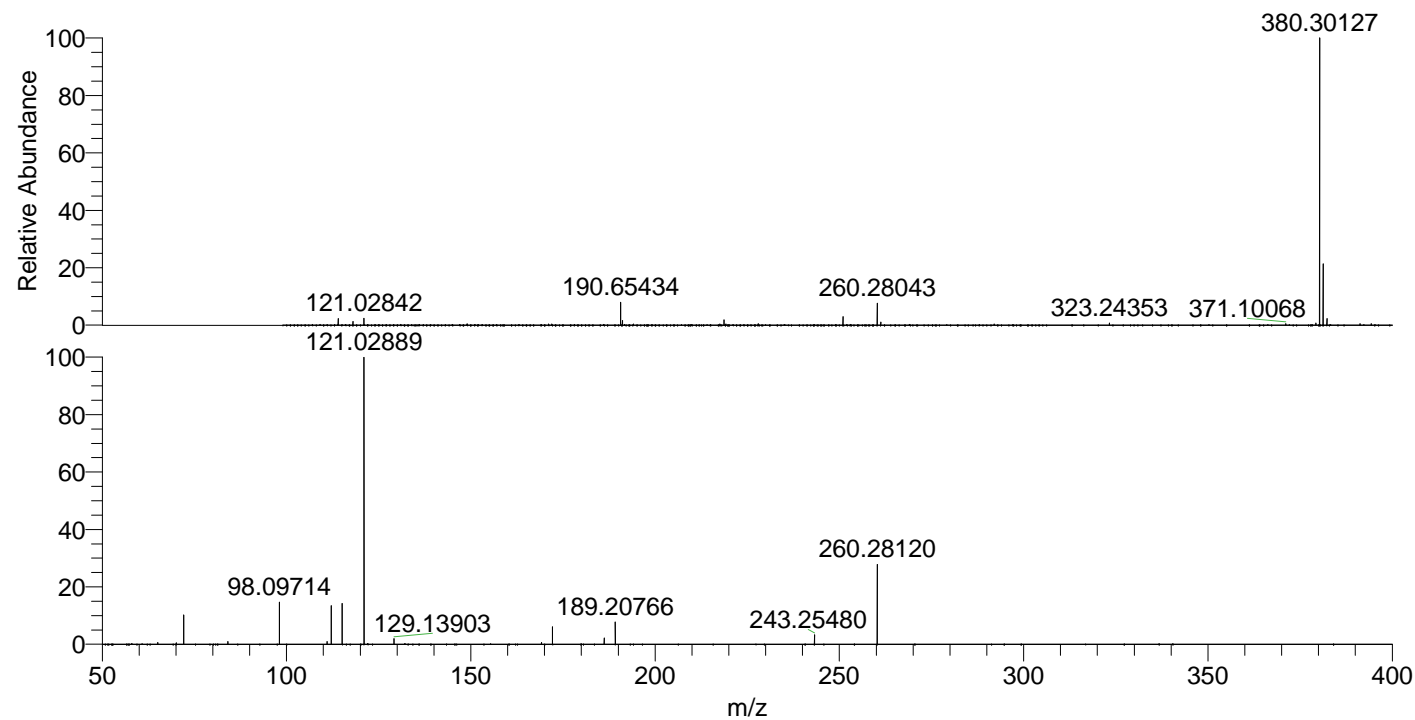
NL: 1.97E7
 Base Peak m/z= 380.30065-380.30445 F:
 FTMS + p ESI Full ms [100.00-1500.00]
 MS Hcurta

NL: 1.65E6
 Base Peak m/z= 190.65424-190.65614 F:
 FTMS + p ESI Full ms [100.00-1500.00]
 MS Hcurta

NL: 8.49E5
 Base Peak m/z= 50.00000-1500.00000 F:
 FTMS + p ESI d Full ms2
 190.65@hcd35.00 [50.00-405.00] MS
 Hcurta

Hcurta#1535-1572 RT: 3.83-3.93 AV: 7
 F: FTMS + p ESI d Full ms2 190.65 ...
 m/z= 50.00000-1000.00000

m/z	Intensity	Relative
65.03935	2655.1	0.64
70.06600	2164.6	0.52
72.08166	41342.6	9.92
84.08151	4022.1	0.96
98.09714	59749.6	14.33
111.04474	3731.0	0.89
112.11268	54307.2	13.03
115.12353	57535.5	13.80
121.02889	416945.3	100.00
129.13903	7925.1	1.90
169.17009	2568.6	0.62
172.18125	24602.0	5.90
186.19714	8703.3	2.09
189.20766	31926.8	7.66
243.25480	13635.7	3.27
260.28120	114516.0	27.47



NL: 1.96E7
 Hcurta#1537 RT: 3.84
 AV: 1 T: FTMS + p ESI
 Full lock ms
 [100.00-1500.00]

NL: 4.03E5
 Hcurta#1464-1621 RT:
 3.83-3.93 AV: 7 F: FTMS
 + p ESI d Full ms2
 190.65@hcd35.00
 [50.00-405.00]