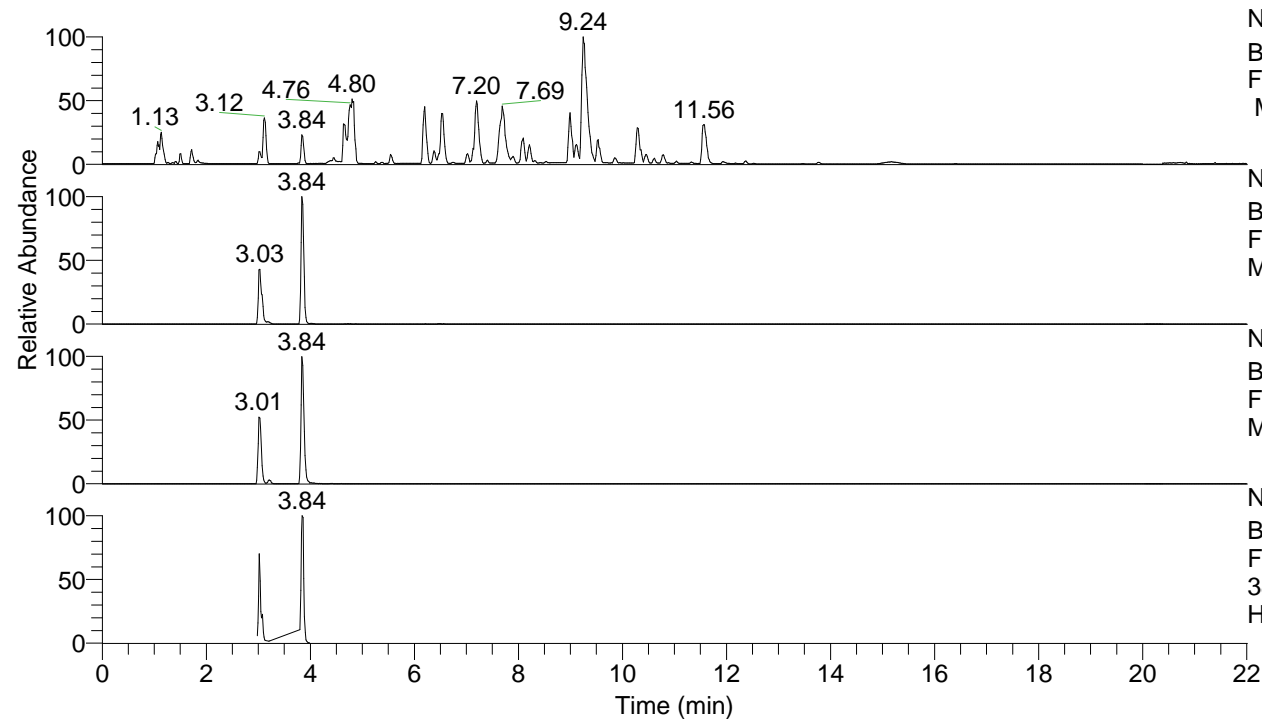


RT: 0.00 - 22.01



NL: 8.52E7  
 Base Peak m/z= 100.00000-1500.00000  
 F: FTMS + p ESI Full ms [100.00-1500.00]  
 MS Hcurta

NL: 1.97E7  
 Base Peak m/z= 380.30065-380.30445 F:  
 FTMS + p ESI Full ms [100.00-1500.00]  
 MS Hcurta

NL: 1.65E6  
 Base Peak m/z= 190.65424-190.65614 F:  
 FTMS + p ESI Full ms [100.00-1500.00]  
 MS Hcurta

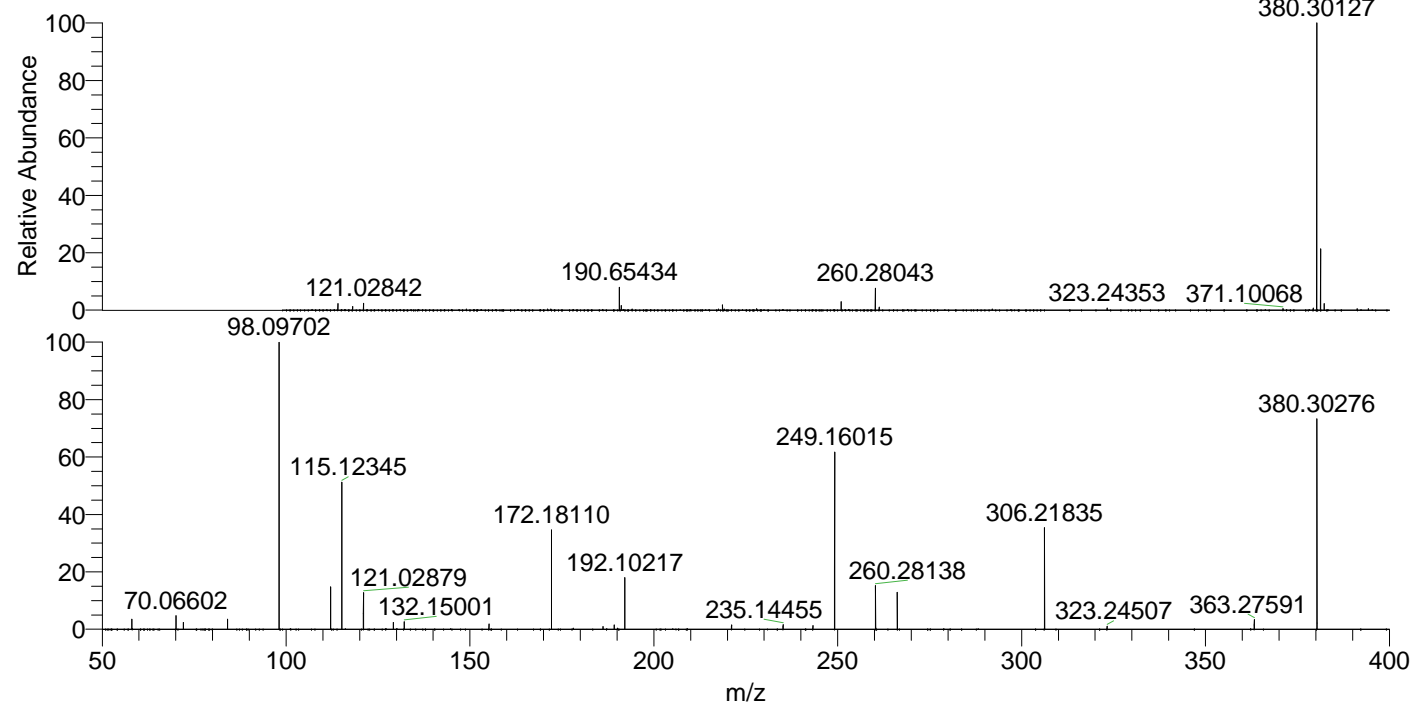
NL: 2.78E6  
 Base Peak m/z= 50.00000-1500.00000 F:  
 FTMS + p ESI d Full ms2  
 380.30@hcd35.00 [50.00-405.00] MS  
 Hcurta

Hcurta#1522-1589 RT: 3.80-3.97 AV: 12

F: FTMS + p ESI d Full ms2 380.30 ...

m/z= 50.00000-1000.00000

m/z	Intensity	Relative
58.06604	32409.5	3.50
70.06602	43623.8	4.71
72.08165	22937.5	2.48
84.08151	31869.1	3.44
98.09702	925939.7	100.00
112.11258	140654.5	15.19
115.12345	485325.9	52.41
121.02879	116926.9	12.63
129.13896	22375.2	2.42
132.15001	23901.8	2.58
155.15469	16561.3	1.79
172.18110	325674.3	35.17
186.19738	8941.7	0.97
189.20782	13704.9	1.48
192.10217	164346.5	17.75
221.12909	13802.6	1.49
235.14455	14740.6	1.59
243.25495	11480.9	1.24
249.16015	583288.4	62.99
260.28138	139156.6	15.03
266.18693	119902.6	12.95
306.21835	327964.6	35.42
323.24507	9957.1	1.08
363.27591	31051.7	3.35
380.30276	696896.1	75.26



NL: 1.96E7  
 Hcurta#1537 RT: 3.84  
 AV: 1 T: FTMS + p ESI  
 Full lock ms  
 [100.00-1500.00]

NL: 9.15E5  
 Hcurta#1483-1592 RT:  
 3.80-3.97 AV: 12 F:  
 FTMS + p ESI d Full ms2  
 380.30@hcd35.00  
 [50.00-405.00]