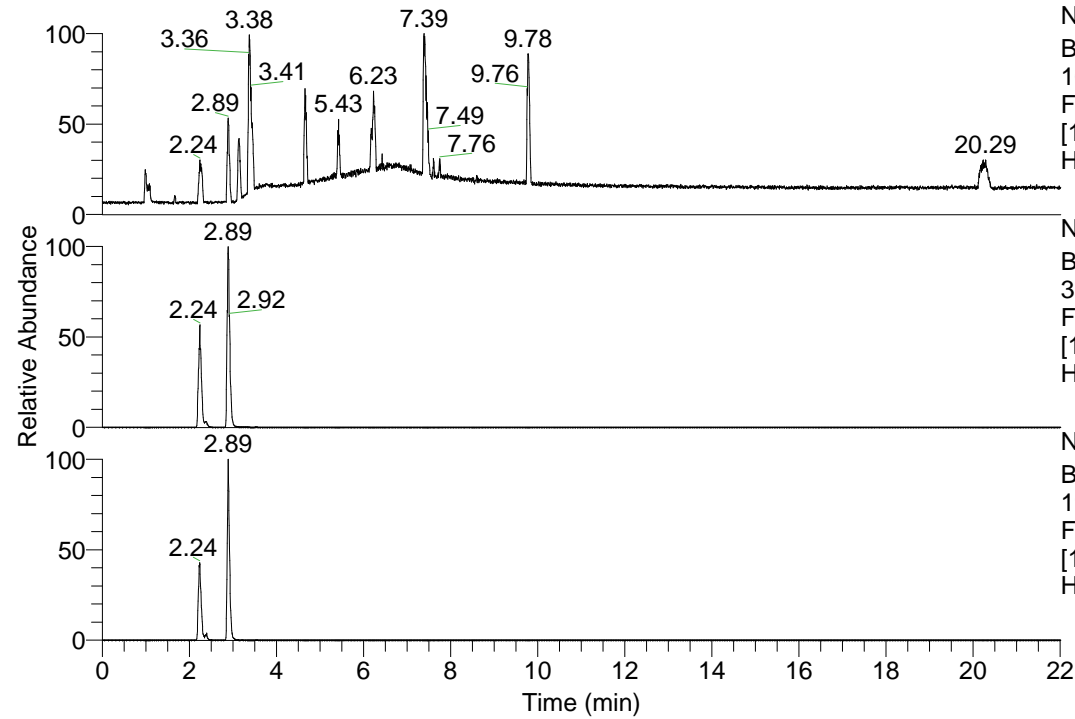


RT: 0.00 - 22.01



NL: 1.13E8
Base Peak m/z=
100.00000-1500.00000 F:
FTMS + p ESI Full ms
[100.00-1500.00] MS
Hcurta_HDX

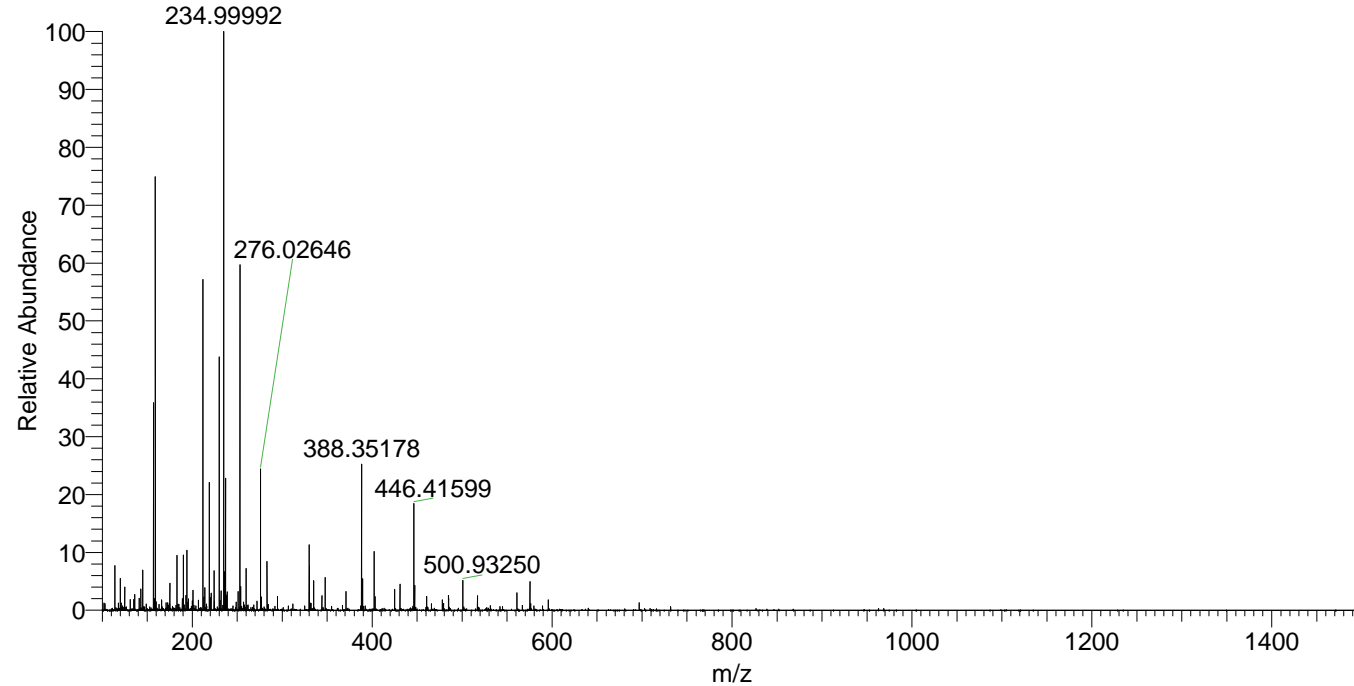
NL: 6.02E7
Base Peak m/z=
388.35083-388.35471 F:
FTMS + p ESI Full ms
[100.00-1500.00] MS
Hcurta_HDX

NL: 1.68E6
Base Peak m/z=
195.18245-195.18441 F:
FTMS + p ESI Full ms
[100.00-1500.00] MS
Hcurta_HDX

Hcurta_HDX#364 RT: 2.38
T: FTMS + p ESI Full ms [100.00-1500.00]
m/z= 388.00000-389.00000

m/z	Intensity	Relative	Delta (ppm)	Composition
388.35178	1919885.5	100.00	-1.13	C ₂₀ H ₃₀ ² H ₈ O ₂ N ₅
			2.85	C ₂₀ H ₂₈ ² H ₉ O ₂ N ₅

Hcurta_HDX #364 RT: 2.38 AV: 1 NL: 7.15E6
T: FTMS + p ESI Full ms [100.00-1500.00]



Hcurta_HDX #364 RT: 2.38 AV: 1 NL: 1.81E6
T: FTMS + p ESI Full ms [100.00-1500.00]

