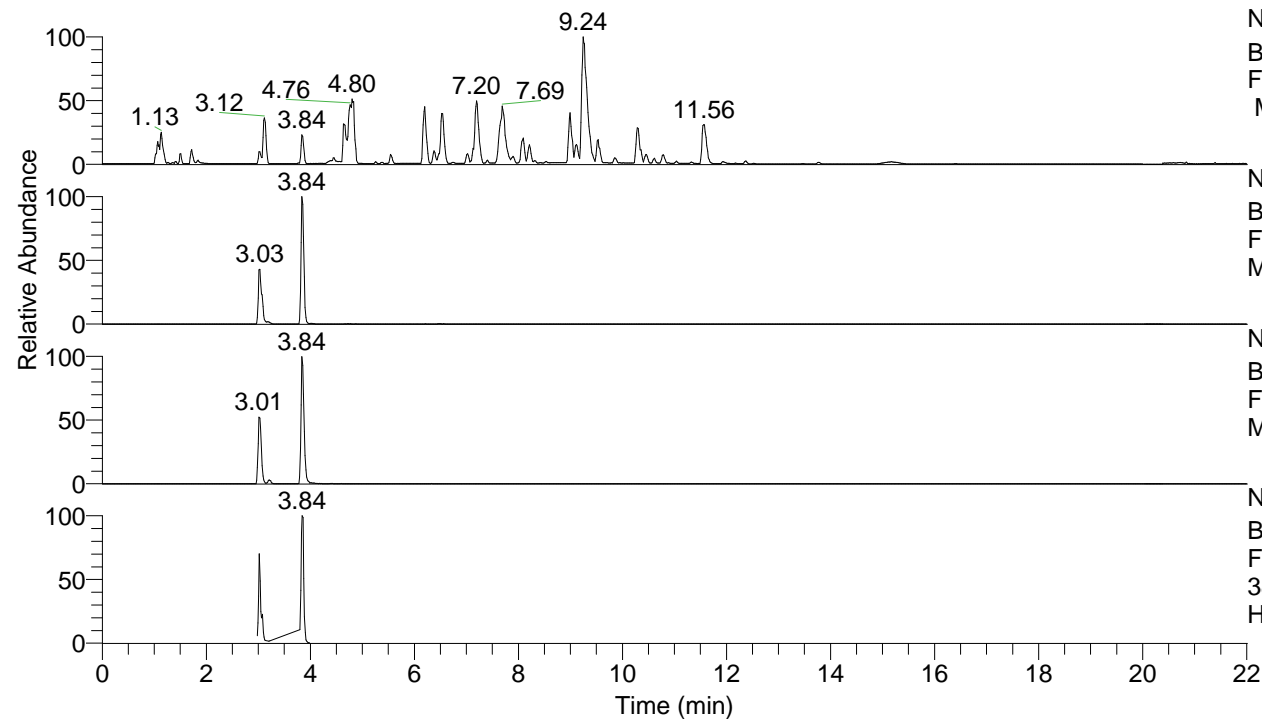


RT: 0.00 - 22.01



NL: 8.52E7
 Base Peak m/z= 100.00000-1500.00000
 F: FTMS + p ESI Full ms [100.00-1500.00]
 MS Hcurta

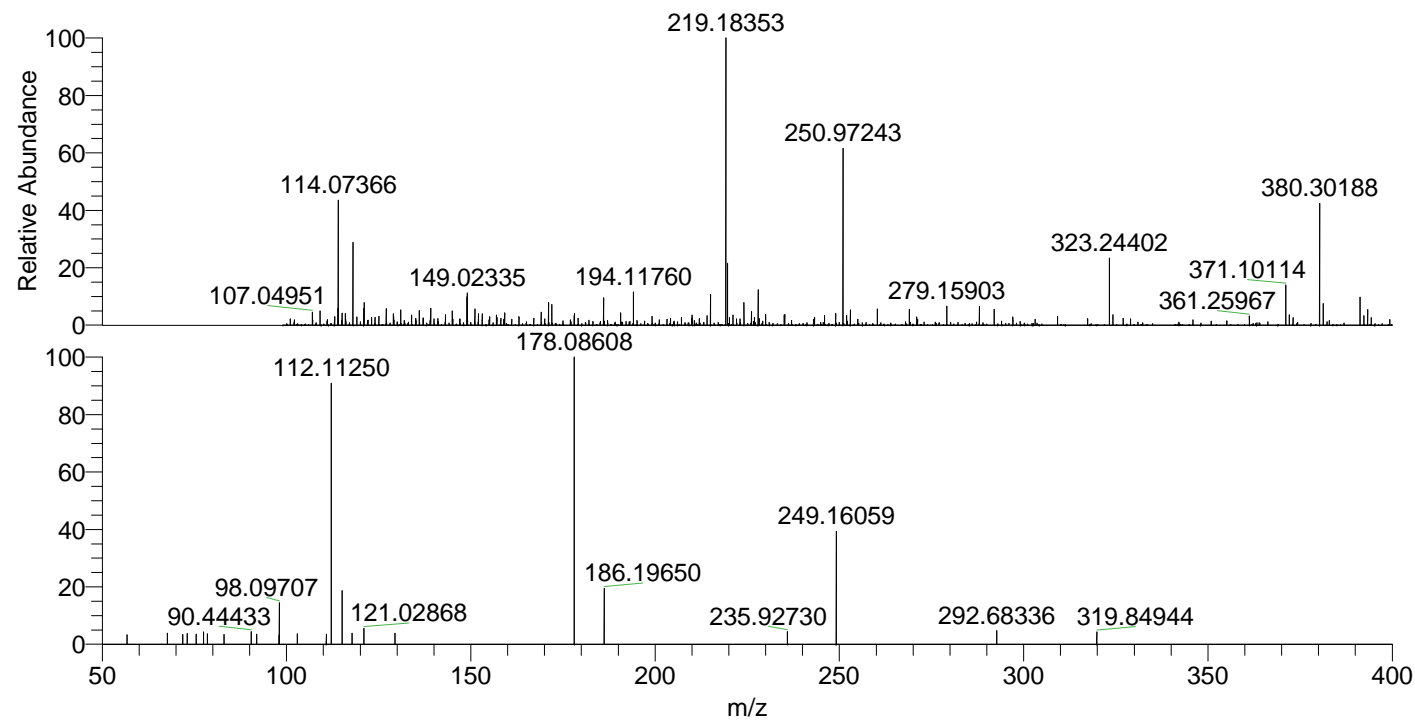
NL: 1.97E7
 Base Peak m/z= 380.30065-380.30445 F:
 FTMS + p ESI Full ms [100.00-1500.00]
 MS Hcurta

NL: 1.65E6
 Base Peak m/z= 190.65424-190.65614 F:
 FTMS + p ESI Full ms [100.00-1500.00]
 MS Hcurta

NL: 2.78E6
 Base Peak m/z= 50.00000-1500.00000 F:
 FTMS + p ESI d Full ms2
 380.30@hcd35.00 [50.00-405.00] MS
 Hcurta

Hcurta#1284-1290 RT: 3.20-3.22 AV: 2
 F: FTMS + p ESI d Full ms2 380.30 ...
 m/z= 50.00000-1000.00000

m/z	Intensity	Relative
56.71796	1503.0	3.33
67.67677	1756.6	3.89
71.82060	1541.2	3.41
73.03841	1720.0	3.81
75.51654	1583.9	3.51
77.50067	1964.5	4.35
78.56688	1642.7	3.64
83.06933	1558.4	3.45
90.44433	2035.9	4.51
91.87814	1599.7	3.54
97.97720	1479.8	3.28
98.09707	6554.5	14.51
102.96099	1671.2	3.70
110.79608	1606.0	3.56
112.11250	41107.5	91.00
115.12340	8470.0	18.75
117.77022	1761.6	3.90
121.02868	2588.1	5.73
129.41768	1790.8	3.96
178.08608	45174.0	100.00
186.19650	8781.2	19.44
235.92730	2029.1	4.49
249.16059	17760.4	39.32
292.68336	2123.1	4.70
319.84944	1967.5	4.36



NL: 8.94E5
 Hcurta#1279 RT: 3.19
 AV: 1 T: FTMS + p ESI
 Full lock ms
 [100.00-1500.00]

NL: 4.52E4
 Hcurta#1279-1290 RT:
 3.20-3.22 AV: 2 F: FTMS
 + p ESI d Full ms2
 380.30@hcd35.00
 [50.00-405.00]