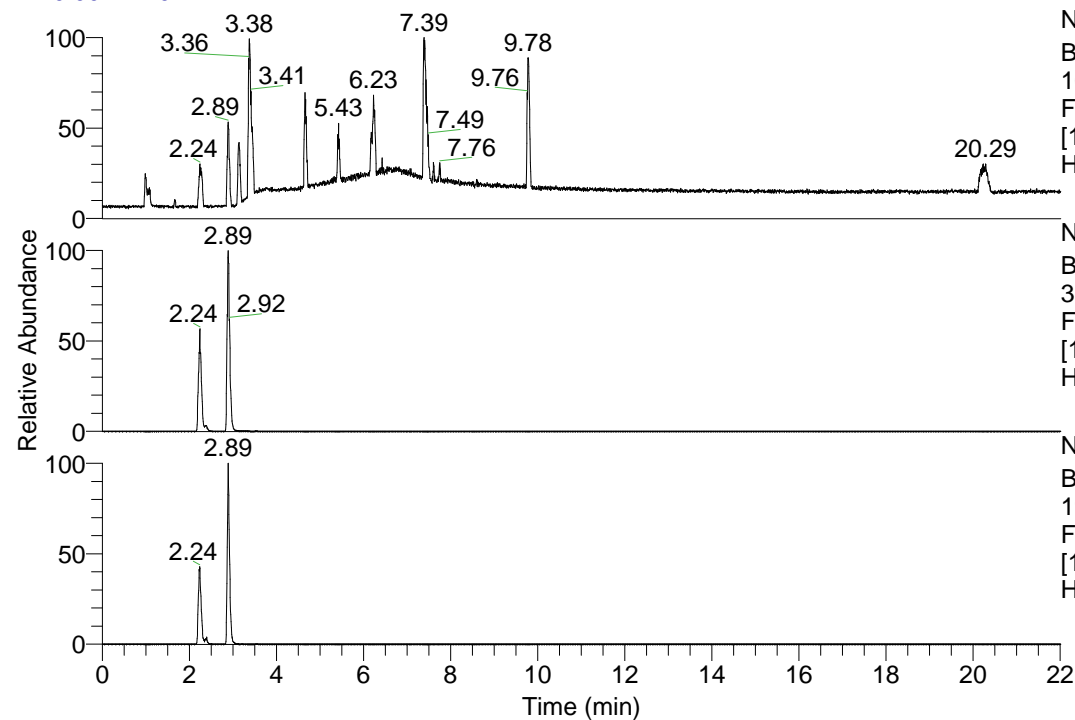


RT: 0.00 - 22.01



NL: 1.13E8
 Base Peak m/z=
 100.00000-1500.00000 F:
 FTMS + p ESI Full ms
 [100.00-1500.00] MS
 Hcurta_HDX

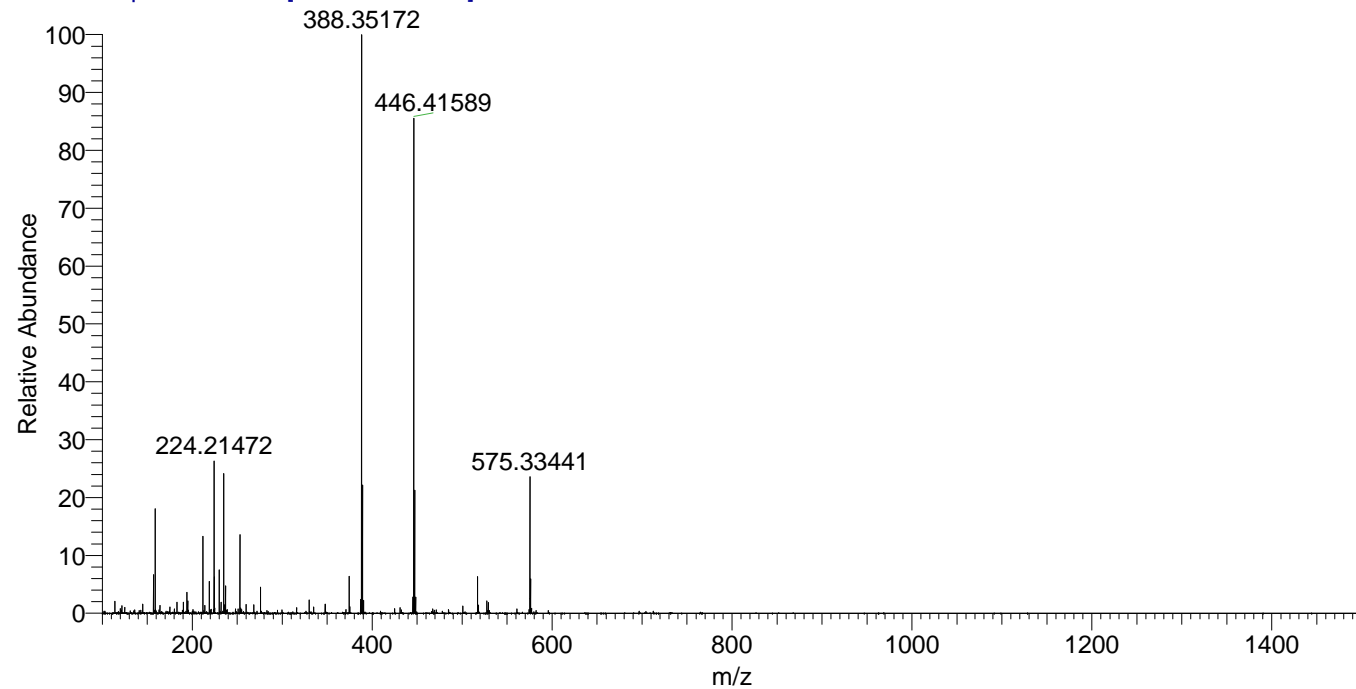
NL: 6.02E7
 Base Peak m/z=
 388.35083-388.35471 F:
 FTMS + p ESI Full ms
 [100.00-1500.00] MS
 Hcurta_HDX

NL: 1.68E6
 Base Peak m/z=
 195.18245-195.18441 F:
 FTMS + p ESI Full ms
 [100.00-1500.00] MS
 Hcurta_HDX

Hcurta_HDX#341 RT: 2.24
 T: FTMS + p ESI Full ms [100.00-1500.00]
 m/z= 388.00000-389.00000

m/z	Intensity	Relative	Delta (ppm)	Composition
388.35172	33669620.0	100.00	-1.29	C ₂₀ H ₃₀ ² H ₈ O ₂ N ₅
			2.70	C ₂₀ H ₂₈ ² H ₉ O ₂ N ₅

Hcurta_HDX #341 RT: 2.24 AV: 1 NL: 3.24E7
 T: FTMS + p ESI Full ms [100.00-1500.00]



Hcurta_HDX #341 RT: 2.24 AV: 1 NL: 3.24E7
 T: FTMS + p ESI Full ms [100.00-1500.00]

