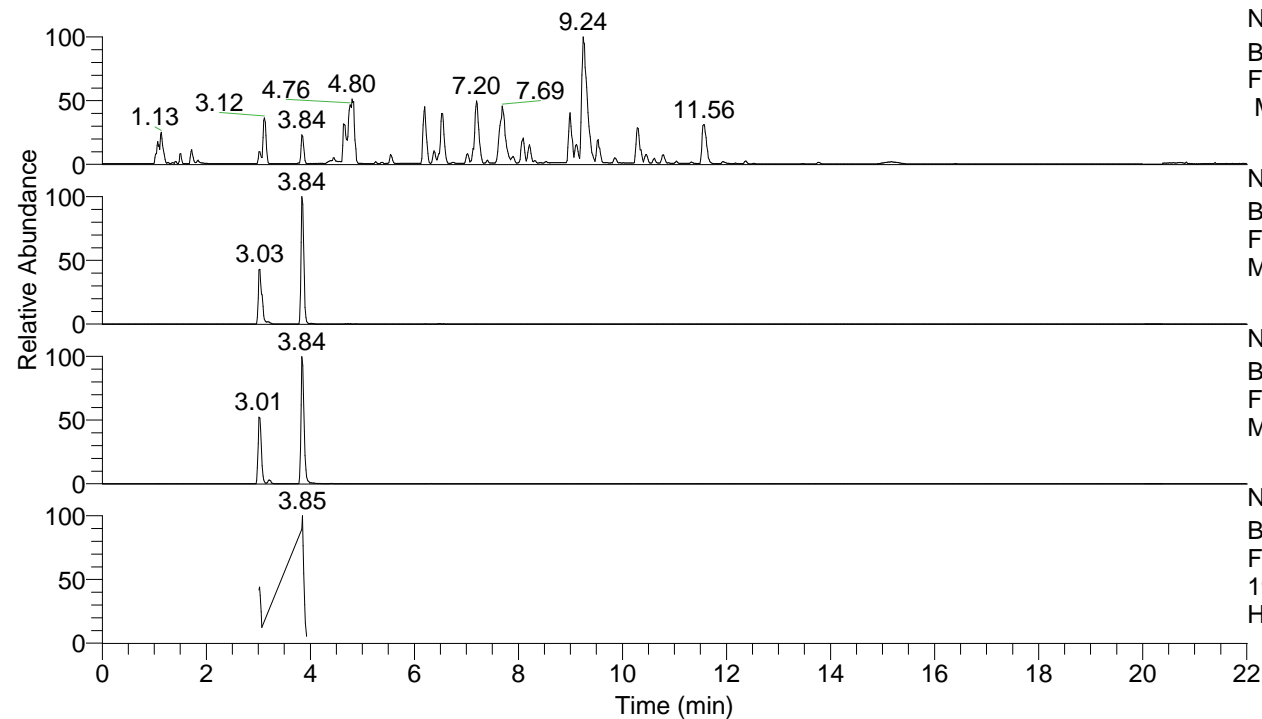


RT: 0.00 - 22.01



NL: 8.52E7
 Base Peak m/z= 100.00000-1500.00000
 F: FTMS + p ESI Full ms [100.00-1500.00]
 MS Hcurta

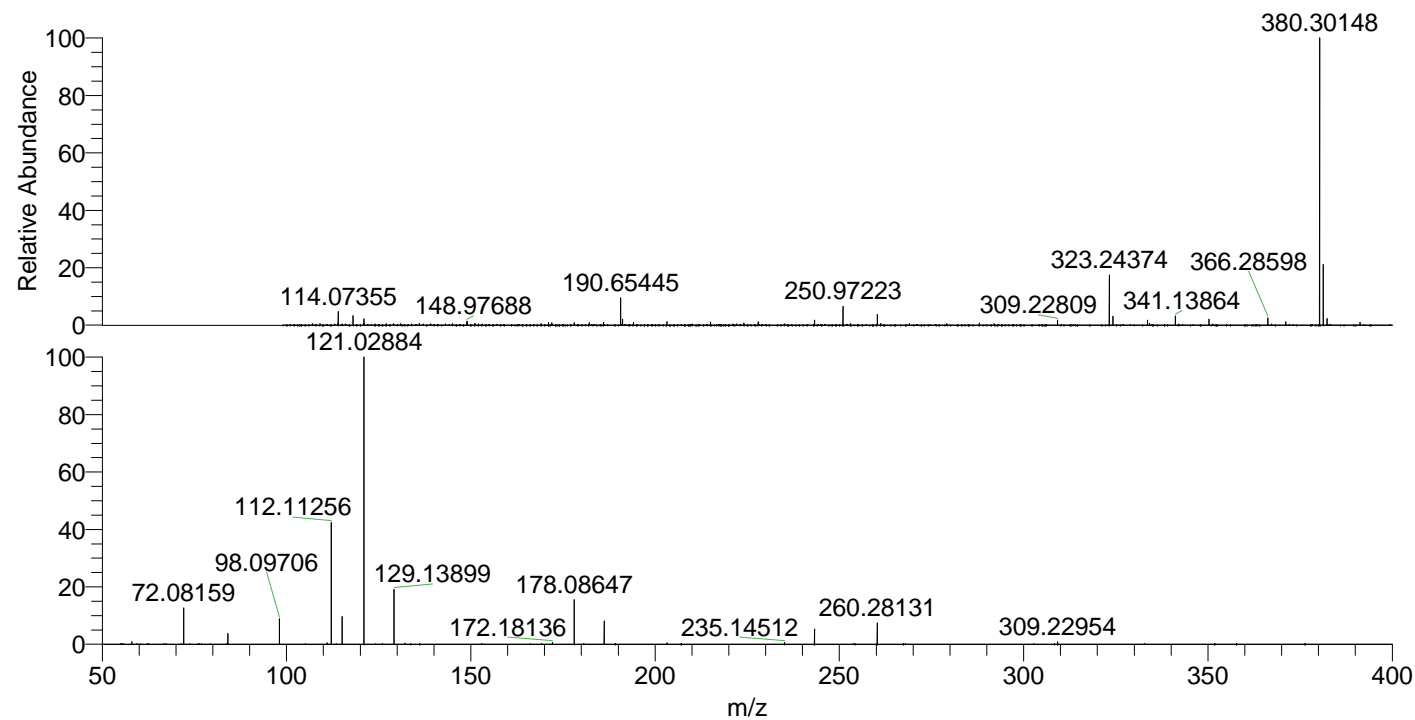
NL: 1.97E7
 Base Peak m/z= 380.30065-380.30445 F:
 FTMS + p ESI Full ms [100.00-1500.00]
 MS Hcurta

NL: 1.65E6
 Base Peak m/z= 190.65424-190.65614 F:
 FTMS + p ESI Full ms [100.00-1500.00]
 MS Hcurta

NL: 8.49E5
 Base Peak m/z= 50.00000-1500.00000 F:
 FTMS + p ESI d Full ms2
 190.65@hcd35.00 [50.00-405.00] MS
 Hcurta

Hcurta#1205-1229 RT: 3.01-3.07 AV: 5
 F: FTMS + p ESI d Full ms2 190.65 ...
 m/z= 50.00000-1000.00000

m/z	Intensity	Relative
58.06590	2258.2	0.89
72.08159	31917.9	12.51
84.08150	9764.3	3.83
98.09706	22333.0	8.76
111.04455	1375.6	0.54
112.10504	1897.4	0.74
112.11256	107708.8	42.23
115.12356	24471.9	9.59
121.02884	255057.3	100.00
129.13899	48477.8	19.01
172.18136	1633.7	0.64
178.08647	40249.6	15.78
186.19679	20830.9	8.17
203.22357	1325.3	0.52
235.14512	1634.0	0.64
243.25488	13768.3	5.40
260.28131	19163.3	7.51
309.22954	2241.2	0.88



NL: 8.43E6
 Hcurta#1213 RT: 3.03
 AV: 1 T: FTMS + p ESI
 Full lock ms
 [100.00-1500.00]

NL: 2.53E5
 Hcurta#1202-1231 RT:
 3.01-3.07 AV: 5 F: FTMS
 + p ESI d Full ms2
 190.65@hcd35.00
 [50.00-405.00]