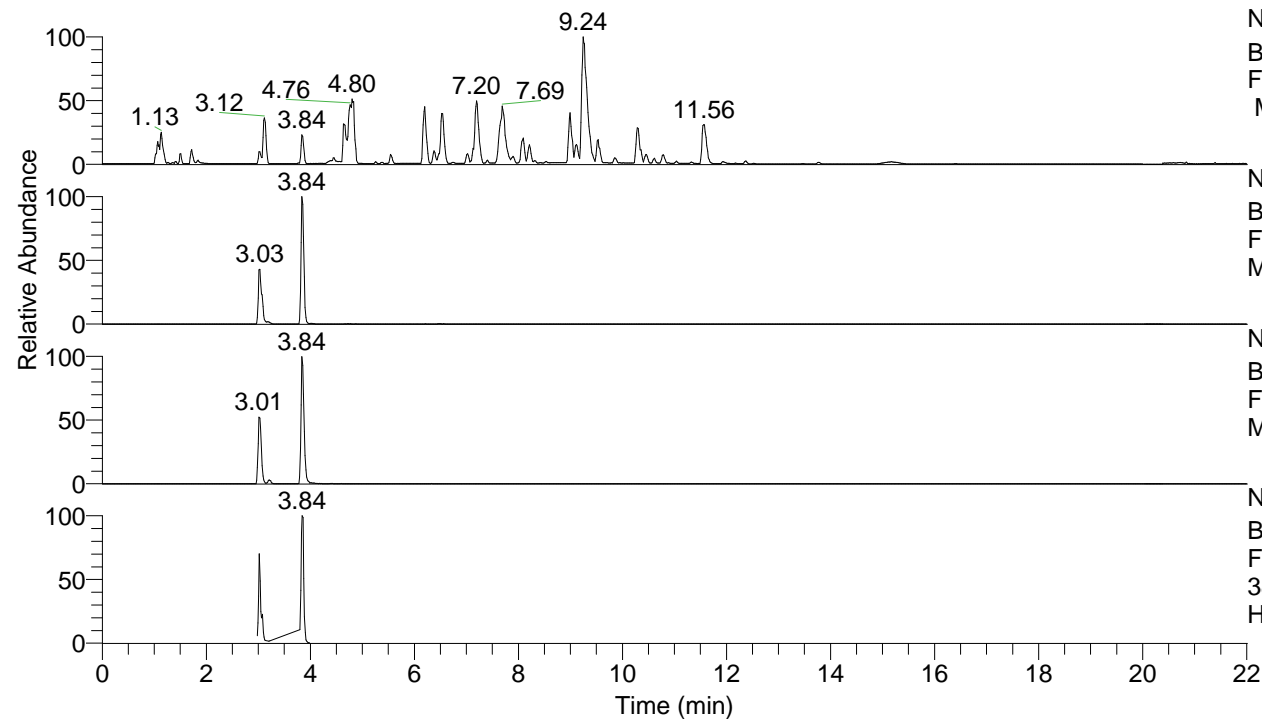


RT: 0.00 - 22.01



NL: 8.52E7
 Base Peak m/z= 100.00000-1500.00000
 F: FTMS + p ESI Full ms [100.00-1500.00]
 MS Hcurta

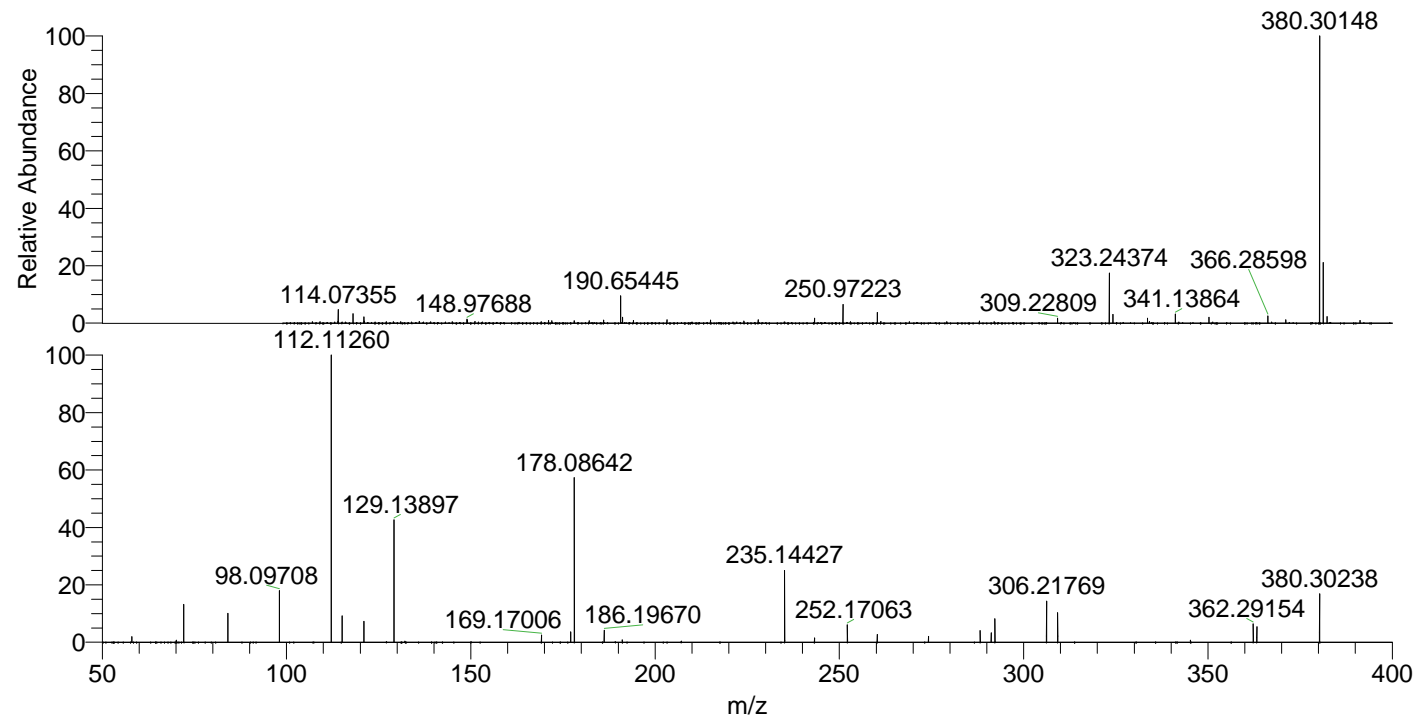
NL: 1.97E7
 Base Peak m/z= 380.30065-380.30445 F:
 FTMS + p ESI Full ms [100.00-1500.00]
 MS Hcurta

NL: 1.65E6
 Base Peak m/z= 190.65424-190.65614 F:
 FTMS + p ESI Full ms [100.00-1500.00]
 MS Hcurta

NL: 2.78E6
 Base Peak m/z= 50.00000-1500.00000 F:
 FTMS + p ESI d Full ms2
 380.30@hcd35.00 [50.00-405.00] MS
 Hcurta

Hcurta#1194-1232 RT: 2.98-3.08 AV: 8
 F: FTMS + p ESI d Full ms2 380.30 ...
 m/z= 50.00000-1000.00000

m/z	Intensity	Relative
58.06603	15875.1	1.98
70.06597	5896.9	0.74
72.08162	103943.2	12.98
84.08146	82246.6	10.27
98.09708	142324.4	17.77
112.11260	800852.1	100.00
115.12346	71951.8	8.98
121.02869	59398.6	7.42
129.13896	348034.8	43.46
169.17006	20258.3	2.53
177.10265	28022.8	3.50
178.08641	457651.3	57.15
186.19670	32456.4	4.05
191.11821	7122.9	0.89
235.14427	198513.0	24.79
243.25497	11777.6	1.47
252.17065	49020.2	6.12
260.28093	21999.6	2.75
274.19166	16566.5	2.07
288.20735	32752.3	4.09
291.21813	26398.7	3.30
292.20236	65841.7	8.22
306.21769	115560.8	14.43
309.22870	80638.6	10.07
345.26534	5603.8	0.70
362.29154	51488.0	6.43
363.27528	43601.4	5.44
380.30238	132243.3	16.51



NL: 8.43E6
 Hcurta#1213 RT: 3.03
 AV: 1 T: FTMS + p ESI
 Full lock ms
 [100.00-1500.00]

NL: 8.93E5
 Hcurta#1195-1238 RT:
 2.99-3.08 AV: 7 F: FTMS
 + p ESI d Full ms2
 380.30@hcd35.00
 [50.00-405.00]