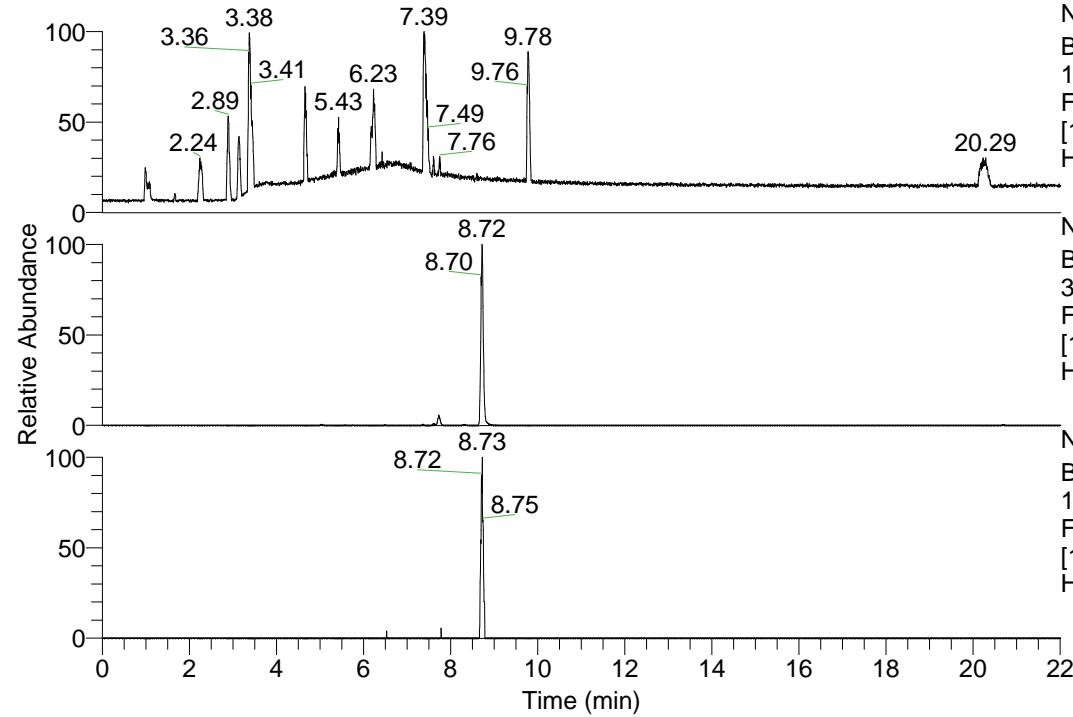


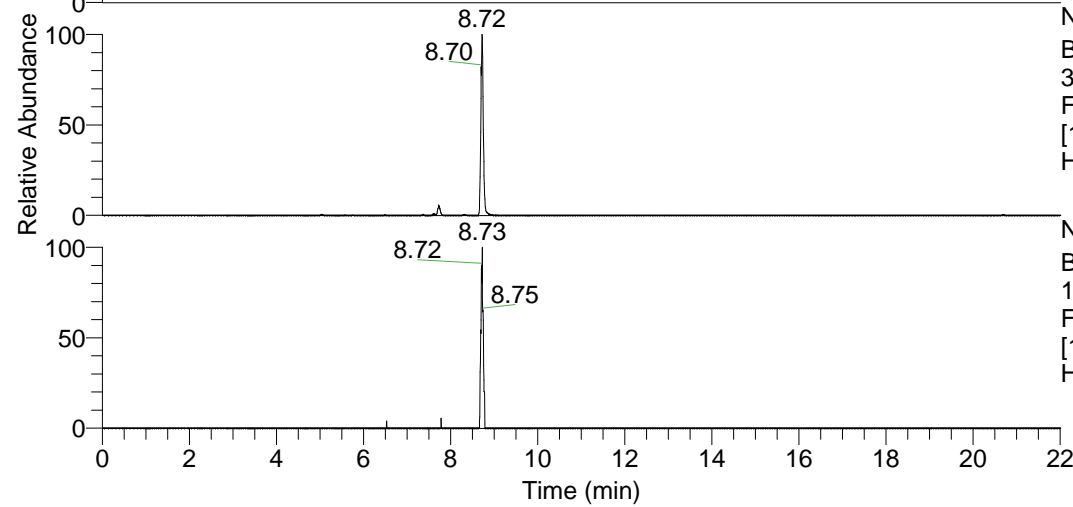
RT: 0.00 - 22.01



NL: 1.13E8
Base Peak m/z=
100.00000-1500.00000 F:
FTMS + p ESI Full ms
[100.00-1500.00] MS
Hcurta_HDX

Hcurta_HDX#1413 RT: 8.72
T: FTMS + p ESI Full ms [100.00-1500.00]
m/z= 383.00000-384.00000

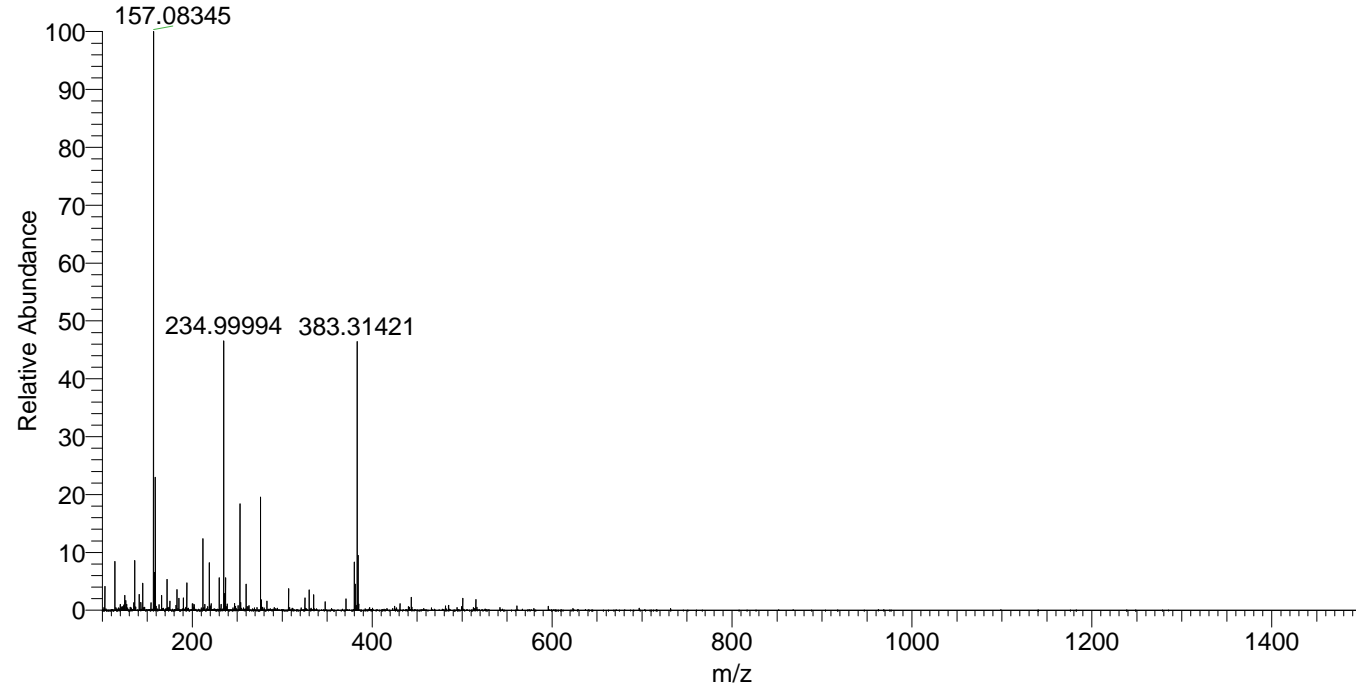
m/z	Intensity	Relative	Delta (ppm)	Composition
383.31421	9908106.0	100.00	-1.12	C ₂₀ H ₂₇ ² H ₇ O ₂ N ₅
			2.92	C ₂₀ H ₂₅ ² H ₈ O ₂ N ₅



NL: 9.91E6
Base Peak m/z=
383.31327-383.31711 F:
FTMS + p ESI Full ms
[100.00-1500.00] MS
Hcurta_HDX

NL: 9.89E4
Base Peak m/z=
192.66369-192.66561 F:
FTMS + p ESI Full ms
[100.00-1500.00] MS
Hcurta_HDX

Hcurta_HDX #1413 RT: 8.72 AV: 1 NL: 2.05E7
T: FTMS + p ESI Full ms [100.00-1500.00]



Hcurta_HDX #1413 RT: 8.72 AV: 1 NL: 9.52E6
T: FTMS + p ESI Full ms [100.00-1500.00]

