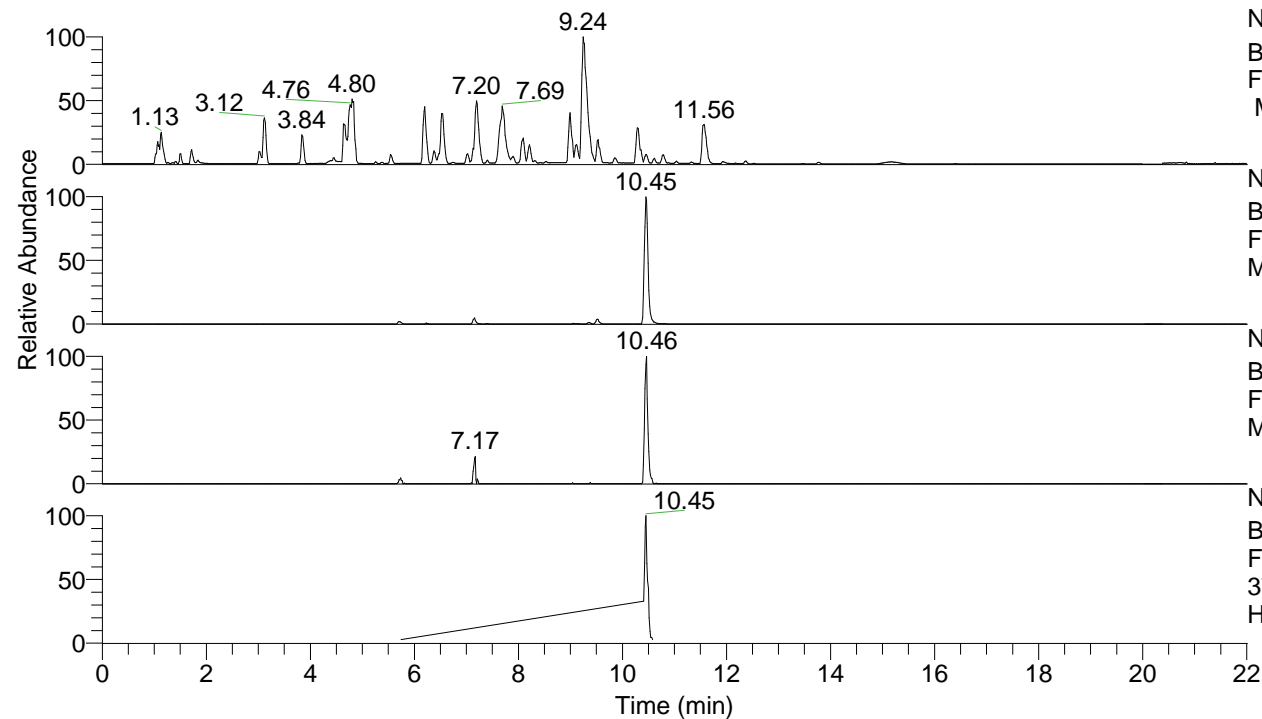


RT: 0.00 - 22.01



NL: 8.52E7
 Base Peak m/z= 100.00000-1500.00000
 F: FTMS + p ESI Full ms [100.00-1500.00]
 MS Hcurta

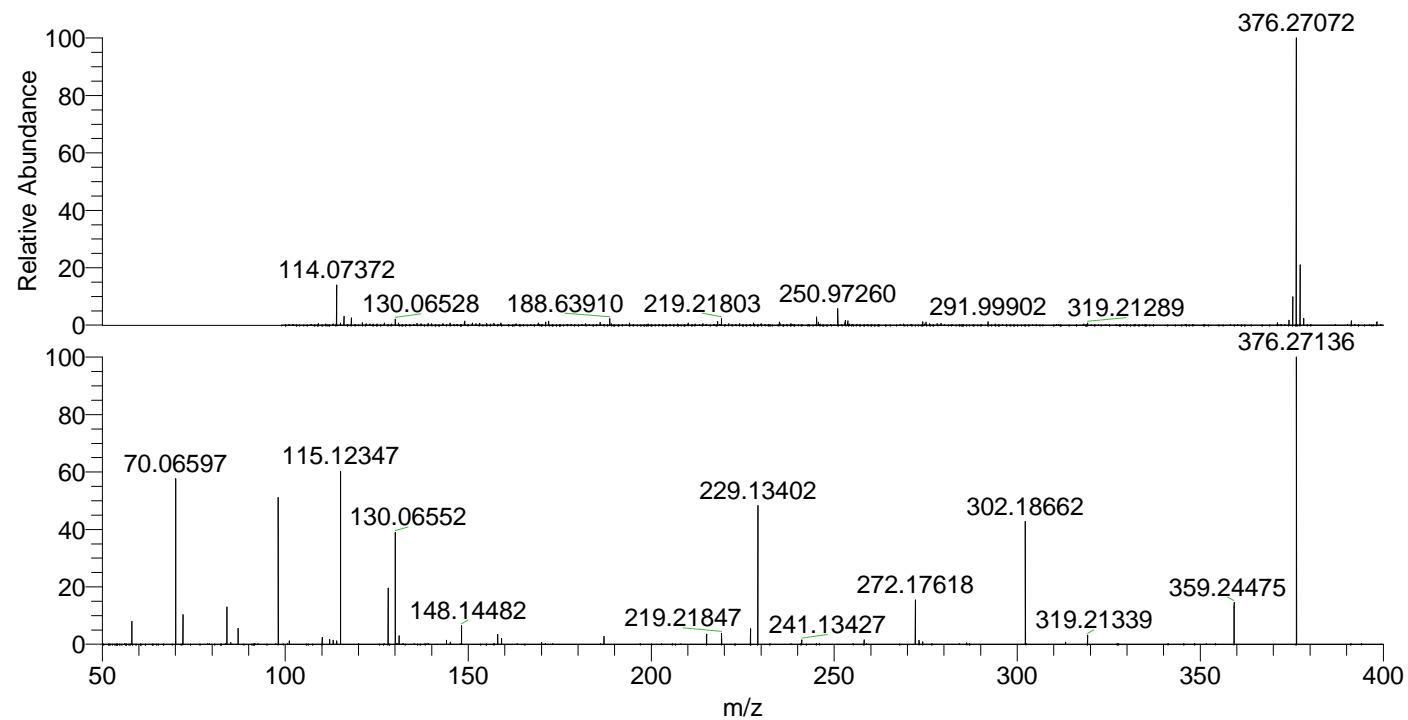
NL: 6.85E6
 Base Peak m/z= 376.26937-376.27313 F:
 FTMS + p ESI Full ms [100.00-1500.00]
 MS Hcurta

NL: 1.68E5
 Base Peak m/z= 188.63860-188.64048 F:
 FTMS + p ESI Full ms [100.00-1500.00]
 MS Hcurta

NL: 7.69E5
 Base Peak m/z= 50.00000-1500.00000 F:
 FTMS + p ESI d Full ms2
 376.27@hcd35.00 [50.00-400.00] MS
 Hcurta

Hcurta#4180-4239 RT: 10.41-10.56 AV:
 F: FTMS + p ESI d Full ms2 376.27 ...
 m/z= 50.00000-1000.00000

m/z	Intensity	Relative
58.06609	24661.9	7.93
70.06597	182822.9	58.75
72.08159	31281.4	10.05
84.08153	40676.5	13.07
85.07678	1805.8	0.58
87.09240	16887.6	5.43
98.09707	155268.4	49.90
101.10797	3777.6	1.21
110.09700	7471.9	2.40
112.11264	5421.7	1.74
113.10781	4256.8	1.37
114.09183	3656.2	1.18
115.12347	183552.0	58.99
128.10731	60511.3	19.45
130.06552	118951.3	38.23
131.11829	9151.0	2.94
144.08131	4085.1	1.31
145.13417	2253.6	0.72
148.14482	20303.7	6.53
158.06042	10618.7	3.41
159.09227	6482.8	2.08
170.06083	1777.7	0.57
187.08710	8670.7	2.79
215.11822	10706.2	3.44
219.21847	11685.3	3.76
227.11849	16411.4	5.27
229.13402	148728.6	47.80
241.13427	4771.6	1.53
258.16111	4596.0	1.48
272.17618	46948.0	15.09
273.17947	4207.6	1.35
274.15556	2636.9	0.85
302.18662	133074.0	42.77
313.20271	2216.4	0.71
319.21339	9699.0	3.12
359.24475	44400.5	14.27
376.27136	311165.2	100.00



NL: 6.61E6
 Hcurta#4195 RT: 10.45
 AV: 1 T: FTMS + p ESI
 Full lock ms
 [100.00-1500.00]

NL: 3.04E5
 Hcurta#4166-4244 RT:
 10.41-10.56 AV: 11 F:
 FTMS + p ESI d Full ms2
 376.27@hcd35.00
 [50.00-400.00]