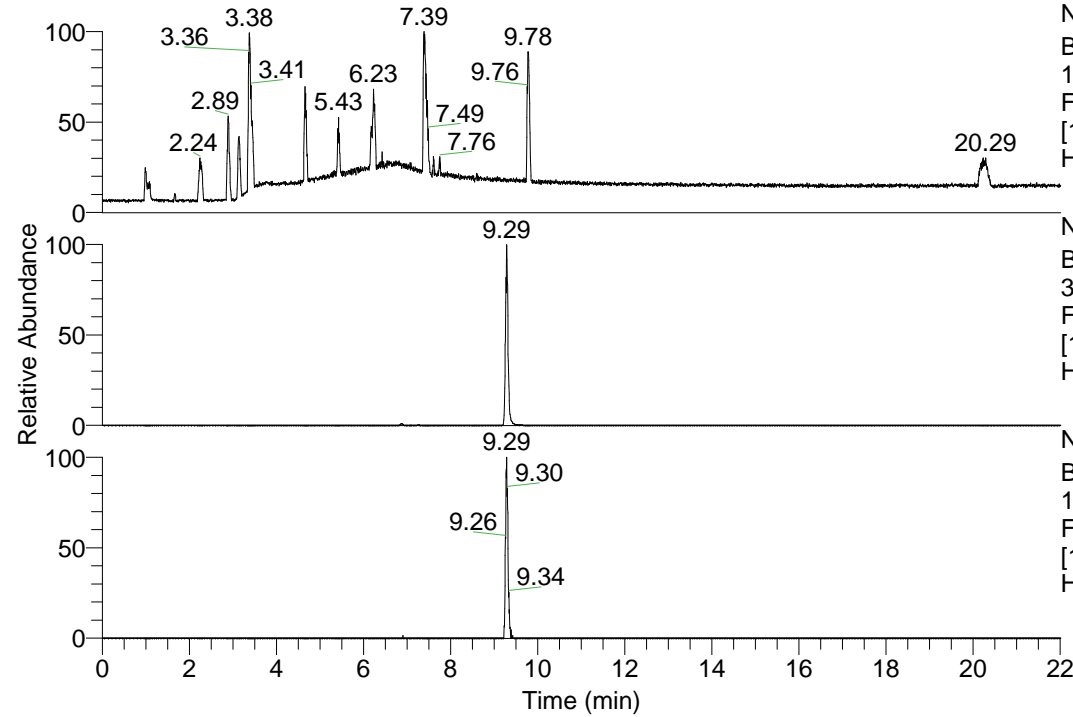


RT: 0.00 - 22.01



NL: 1.13E8  
Base Peak m/z=  
100.00000-1500.00000 F:  
FTMS + p ESI Full ms  
[100.00-1500.00] MS  
Hcurta\_HDX

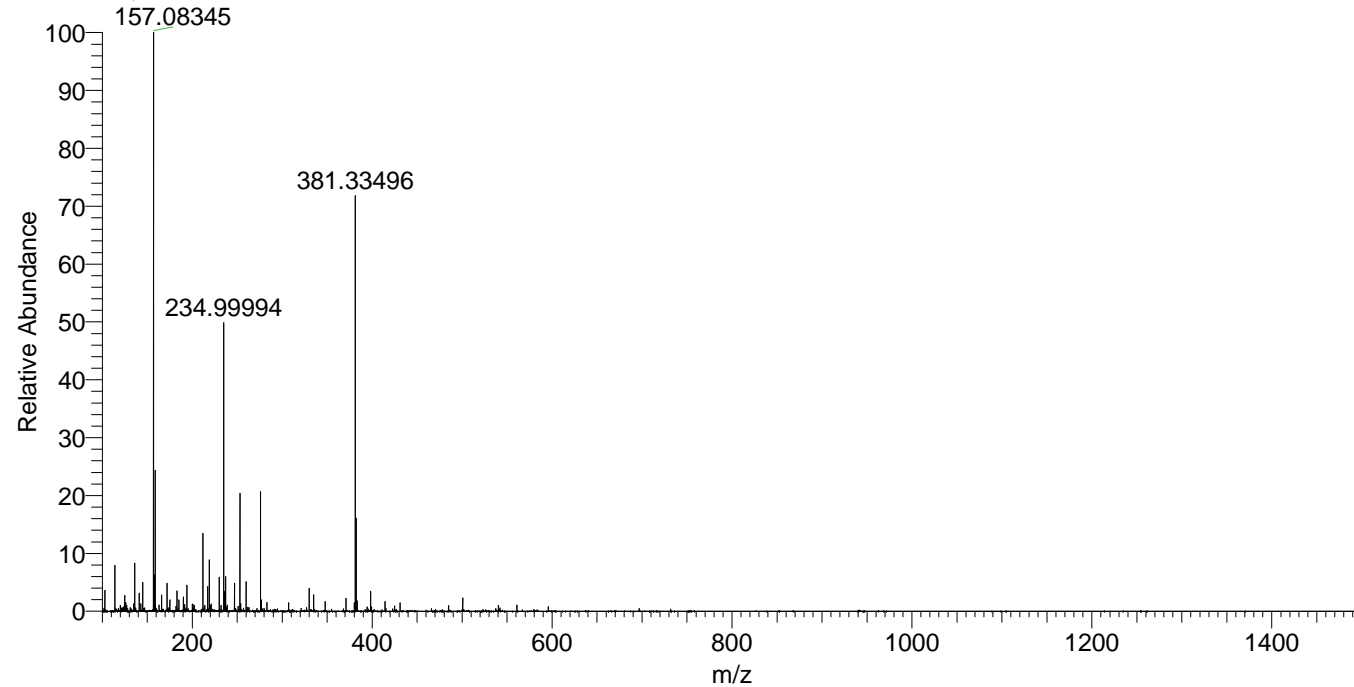
NL: 1.43E7  
Base Peak m/z=  
381.33401-381.33783 F:  
FTMS + p ESI Full ms  
[100.00-1500.00] MS  
Hcurta\_HDX

NL: 2.50E5  
Base Peak m/z=  
191.67405-191.67597 F:  
FTMS + p ESI Full ms  
[100.00-1500.00] MS  
Hcurta\_HDX

Hcurta\_HDX#1506 RT: 9.29  
T: FTMS + p ESI Full ms [100.00-1500.00]  
m/z= 381.00000-382.00000

m/z	Intensity	Relative	Delta (ppm)	Composition
381.33496	14290045.0	100.00	-1.08	C <sub>21</sub> H <sub>29</sub> <sup>2</sup> H <sub>7</sub> O <sub>2</sub> N <sub>5</sub>
			2.98	C <sub>21</sub> H <sub>27</sub> <sup>2</sup> H <sub>8</sub> O <sub>2</sub> N <sub>5</sub>

Hcurta\_HDX #1506 RT: 9.29 AV: 1 NL: 1.96E7  
T: FTMS + p ESI Full ms [100.00-1500.00]



Hcurta\_HDX #1506 RT: 9.29 AV: 1 NL: 1.41E7  
T: FTMS + p ESI Full ms [100.00-1500.00]

