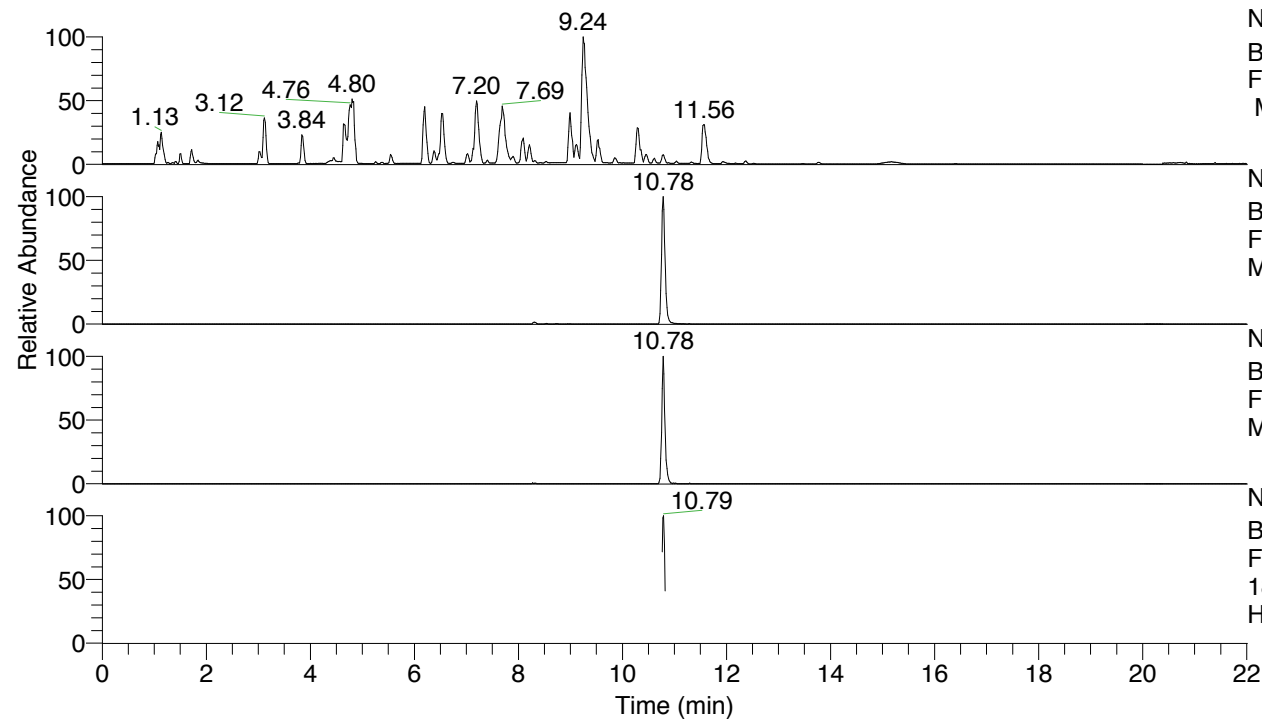


RT: 0.00 - 22.01



NL: 8.52E7
 Base Peak m/z= 100.00000-1500.00000
 F: FTMS + p ESI Full ms [100.00-1500.00]
 MS Hcurta

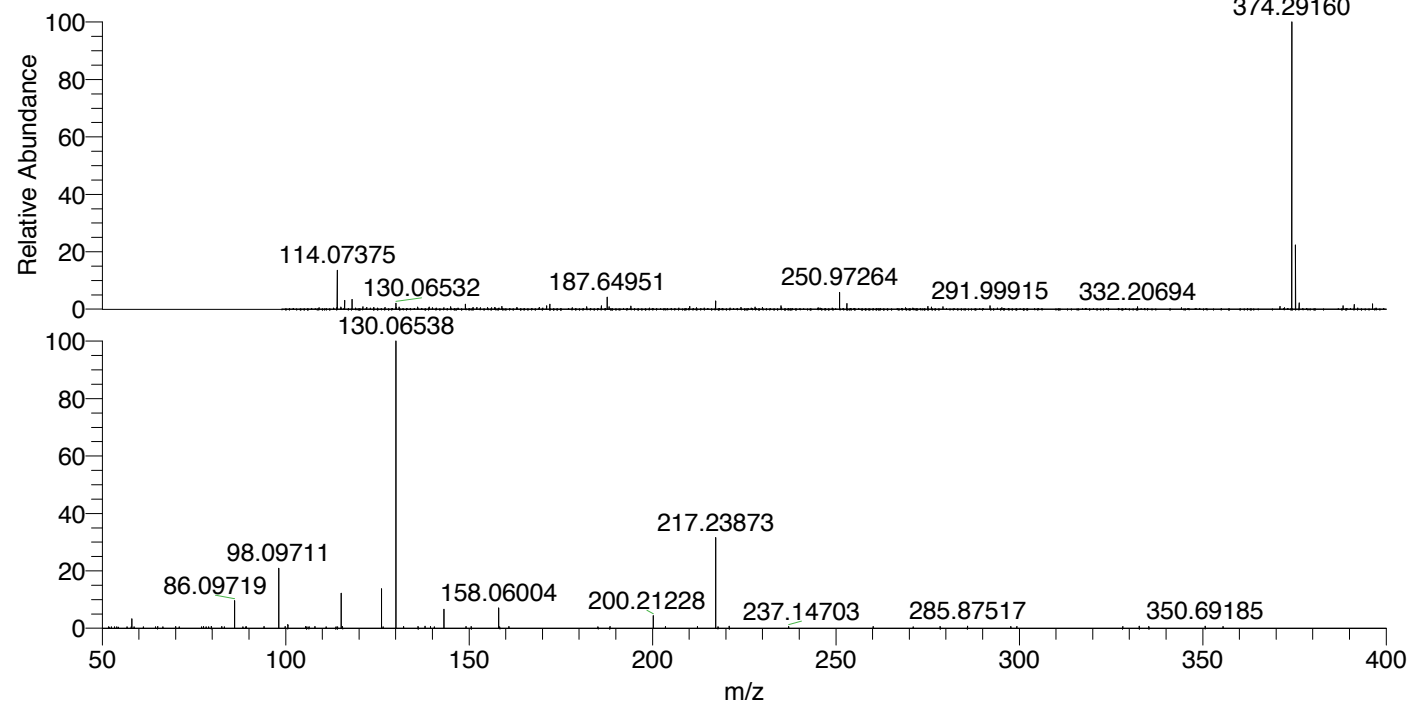
NL: 6.55E6
 Base Peak m/z= 374.29012-374.29386 F:
 FTMS + p ESI Full ms [100.00-1500.00]
 MS Hcurta

NL: 2.73E5
 Base Peak m/z= 187.64897-187.65085 F:
 FTMS + p ESI Full ms [100.00-1500.00]
 MS Hcurta

NL: 1.26E5
 Base Peak m/z= 50.00000-1500.00000 F:
 FTMS + p ESI d Full ms2
 187.65@hcd35.00 [50.00-400.00] MS
 Hcurta

Hcurta#4320-4344 RT: 10.76-10.82 AV: 5
 F: FTMS + p ESI d Full ms2 187.65 ...
 m/z= 50.00000-1000.00000

m/z	Intensity	Relative
58.06604	2996.3	3.28
65.09690	516.0	0.57
70.06606	519.3	0.57
71.00680	497.2	0.54
77.65311	503.0	0.55
79.75533	538.6	0.59
82.62963	503.8	0.55
86.09719	8778.1	9.62
89.12916	484.2	0.53
89.34993	485.0	0.53
94.13415	587.6	0.64
98.09711	18850.7	20.66
99.85523	556.7	0.61
100.61001	1133.8	1.24
105.47828	532.1	0.58
105.76466	479.1	0.52
107.96204	581.2	0.64
111.06216	498.7	0.55
113.70560	474.8	0.52
115.12350	10877.3	11.92
115.52769	528.9	0.58
126.12805	12269.9	13.44
126.55112	481.1	0.53
130.06538	91263.0	100.00
132.15009	532.8	0.58
136.12098	500.6	0.55
138.02871	598.3	0.66
139.50782	504.0	0.55
140.55997	497.1	0.54
143.15475	5924.1	6.49
149.17961	577.3	0.63
150.60735	561.4	0.62
158.06004	6307.0	6.91
158.36786	476.3	0.52
160.86081	522.4	0.57
185.15349	490.8	0.54
188.40059	531.5	0.58
200.21228	3911.5	4.29
203.53234	540.3	0.59
212.24358	589.4	0.65
217.23873	27958.7	30.64
217.88510	491.8	0.54
220.93238	668.2	0.73
237.14703	559.8	0.61
260.17872	544.8	0.60
271.07861	485.8	0.53
278.43595	539.3	0.59
285.87517	612.8	0.67
297.69806	513.9	0.56
299.32623	550.8	0.60
328.20993	562.9	0.62
332.70962	628.1	0.69
335.32304	525.8	0.58
350.69185	636.8	0.70
355.54389	521.4	0.57



NL: 6.28E6
 Hcurta#4327 RT: 10.78
 AV: 1 T: FTMS + p ESI
 Full lock ms
 [100.00-1500.00]

NL: 8.86E4
 Hcurta#4264-4421 RT:
 10.76-10.82 AV: 5 F:
 FTMS + p ESI d Full ms2
 187.65@hcd35.00
 [50.00-400.00]

Hcurta#4320-4344 RT: 10.76-10.82 AV: 5

F: FTMS + p ESI d Full ms2 187.65@hcd35.00 [50.00-400.00]

m/z= 50.00000-1000.00000

m/z	Intensity	Relative
58.06604	2996.3	3.28
58.69298	466.9	0.51
65.09690	516.0	0.57
66.51514	458.4	0.50
70.06606	519.3	0.57
71.00680	497.2	0.54
77.65311	503.0	0.55
78.99557	460.8	0.50
79.75533	538.6	0.59
82.62963	503.8	0.55
86.09719	8778.1	9.62
89.12916	484.2	0.53
89.34993	485.0	0.53
94.13415	587.6	0.64
98.09711	18850.7	20.66
99.85523	556.7	0.61
100.61001	1133.8	1.24
105.47828	532.1	0.58
105.76466	479.1	0.52
107.96204	581.2	0.64
111.06216	498.7	0.55
113.70560	474.8	0.52
115.12350	10877.3	11.92
115.52769	528.9	0.58
126.12805	12269.9	13.44
126.55112	481.1	0.53
130.06538	91263.0	100.00
132.15009	532.8	0.58
136.12098	500.6	0.55
138.02871	598.3	0.66
139.50782	504.0	0.55
140.55997	497.1	0.54
143.15475	5924.1	6.49
149.17961	577.3	0.63
150.60735	561.4	0.62
158.06004	6307.0	6.91
158.36786	476.3	0.52
160.86081	522.4	0.57
185.15349	490.8	0.54

Hcurta#4320-4344 RT: 10.76-10.82 AV: 5

F: FTMS + p ESI d Full ms2 187.65@hcd35.00 [50.00-400.00]

m/z= 50.00000-1000.00000

m/z	Intensity	Relative
188.40059	531.5	0.58
200.21228	3911.5	4.29
203.53234	540.3	0.59
212.24358	589.4	0.65
217.23873	27958.7	30.64
217.88510	491.8	0.54
220.93238	668.2	0.73
237.14703	559.8	0.61
260.17872	544.8	0.60
271.07861	485.8	0.53
278.43595	539.3	0.59
285.87517	612.8	0.67
297.69806	513.9	0.56
299.32623	550.8	0.60
328.20993	562.9	0.62
332.70962	628.1	0.69
335.32304	525.8	0.58
350.69185	636.8	0.70
355.54389	521.4	0.57