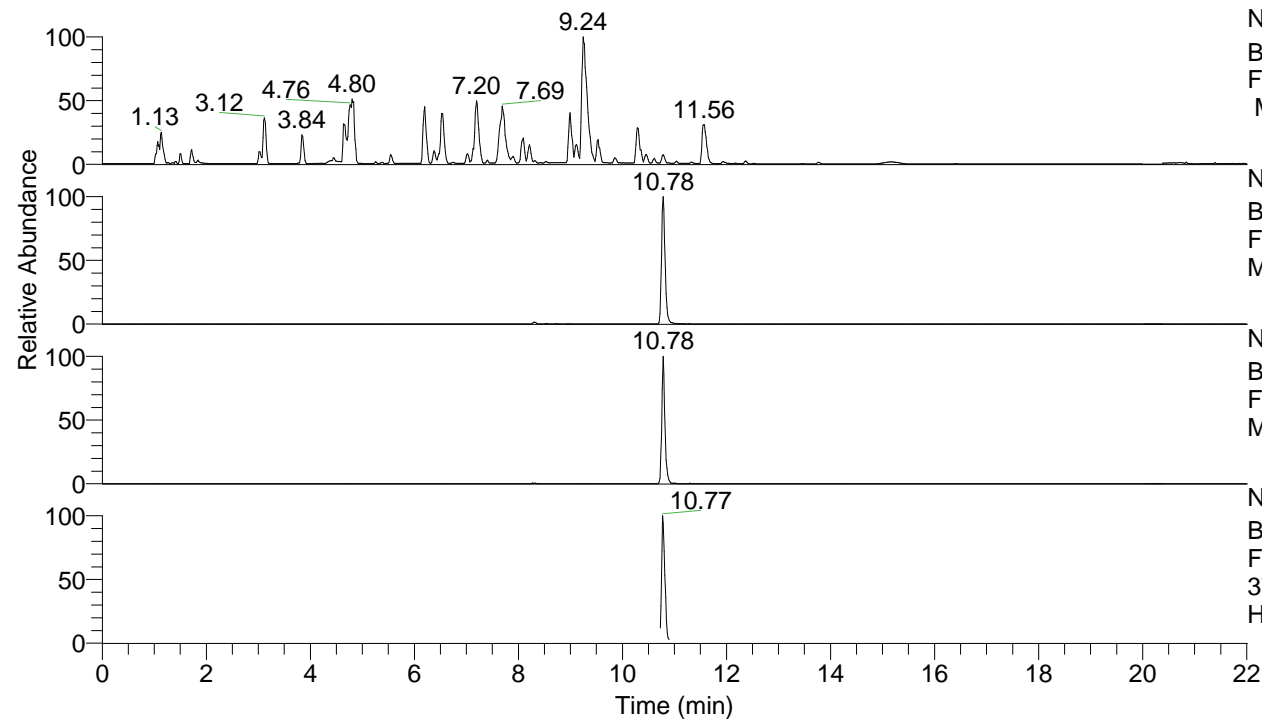


RT: 0.00 - 22.01



NL: 8.52E7
 Base Peak m/z= 100.00000-1500.00000
 F: FTMS + p ESI Full ms [100.00-1500.00]
 MS Hcurta

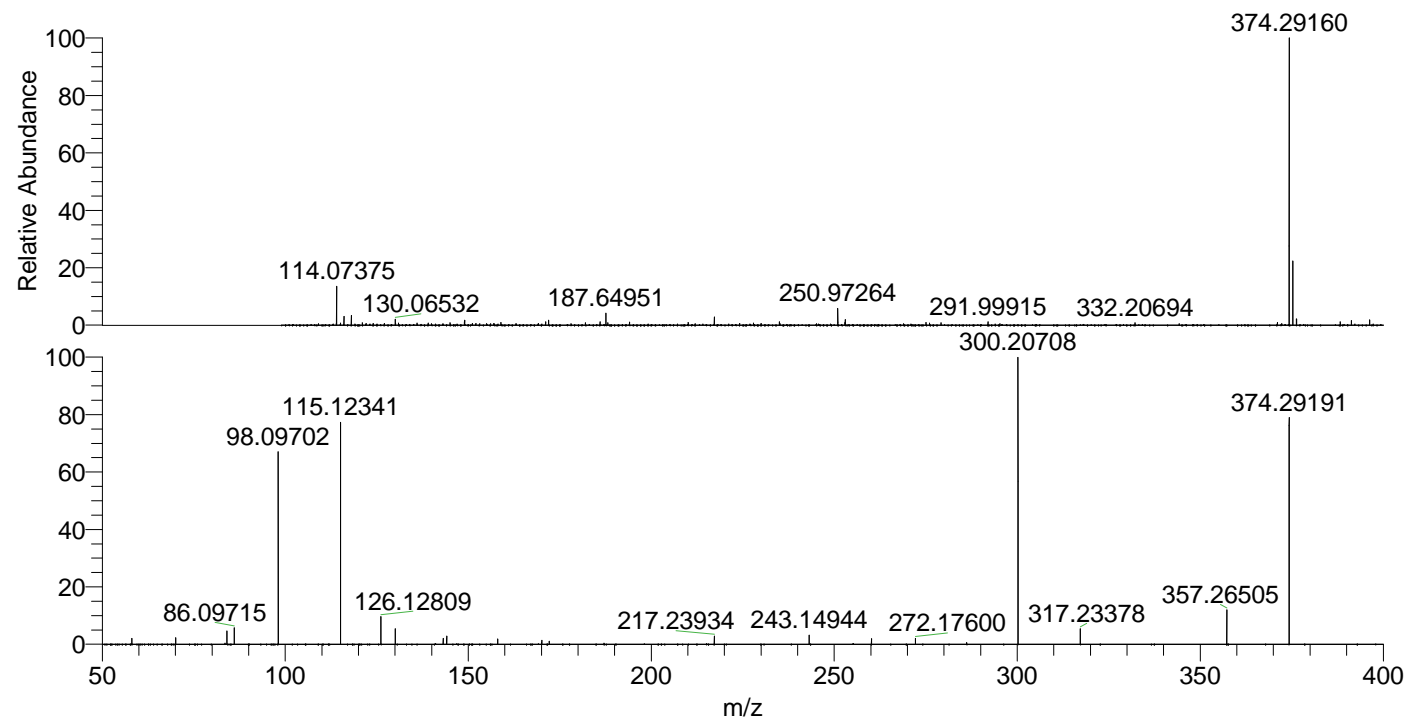
NL: 6.55E6
 Base Peak m/z= 374.29012-374.29386 F:
 FTMS + p ESI Full ms [100.00-1500.00]
 MS Hcurta

NL: 2.73E5
 Base Peak m/z= 187.64897-187.65085 F:
 FTMS + p ESI Full ms [100.00-1500.00]
 MS Hcurta

NL: 1.18E6
 Base Peak m/z= 50.00000-1500.00000 F:
 FTMS + p ESI d Full ms2
 374.29@hcd35.00 [50.00-400.00] MS
 Hcurta

Hcurta#4306-4373 RT: 10.73-10.90 AV:
 F: FTMS + p ESI d Full ms2 374.29 ...
 m/z= 50.00000-1000.00000

m/z	Intensity	Relative
58.06588	9034.7	2.04
70.06587	10229.7	2.31
84.08146	21239.5	4.80
86.09715	25153.8	5.68
98.09702	294158.6	66.46
115.12341	340617.5	76.96
126.12809	43177.6	9.76
130.06534	23815.1	5.38
143.15447	9619.7	2.17
144.08096	8670.7	1.96
144.13850	12650.9	2.86
158.06022	8437.2	1.91
170.06074	2608.1	0.59
170.09689	6419.6	1.45
172.11240	4427.5	1.00
217.23934	12969.7	2.93
243.14944	14161.1	3.20
260.17621	8864.0	2.00
272.17600	9296.1	2.10
286.19180	2826.5	0.64
300.20708	442578.4	100.00
317.23378	24101.0	5.45
357.26505	52899.9	11.95
374.29191	355374.5	80.30



NL: 6.28E6
 Hcurta#4327 RT: 10.78
 AV: 1 T: FTMS + p ESI
 Full lock ms
 [100.00-1500.00]

NL: 4.39E5
 Hcurta#4254-4401 RT:
 10.73-10.90 AV: 12 F:
 FTMS + p ESI d Full ms2
 374.29@hcd35.00
 [50.00-400.00]